


53)  The gas manifold and CSST flexible gas lines are not bonded to the electrical system. Typically a ground wire is run directly to the electric panel to the steel manifold. The purpose is to prevent damage to CSST during lightning strikes. Recommend a qualified electrician review and bond/ground gas lines per standard practice.

For more information see: <http://csstsafety.com/Images/CSST-Direct-Bonding-Tech-Bulletin.pdf>

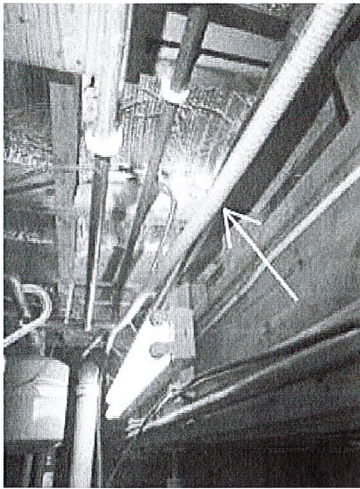


Photo 53-1 •

54)  Recommended upgrade :

One or more electric receptacles that serve the laundry area appear to have no ground fault circuit interrupter (GFCI) protection. This is a safety concern. A qualified electrician should install GFCI receptacles or circuit breaker(s) as needed.

GFCI's may not have been required or available at the time of construction, however, it is a safety recommendation of the Inspector now.

<https://coveredbridgeprofessionalhomeinspections.com/blog/wp-content/uploads/2020/04/E126C-Grounding-Concepts-Safety-640x480.jpg>

Image of GFCI protection for the entire circuit area from one GFCI upstream:

<https://coveredbridgeprofessionalhomeinspections.com/blog/wp-content/uploads/2020/04/E022-GFCI-Protects-Outlets-Downstream-640x480.jpg>

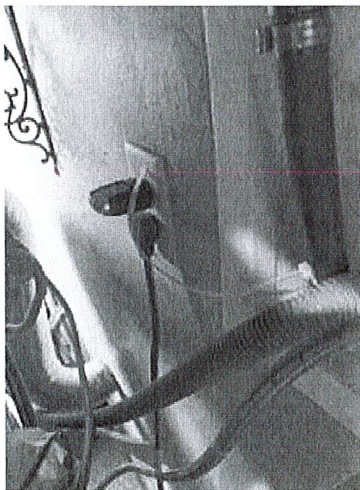


Photo 54-1 •Basement laundry.