

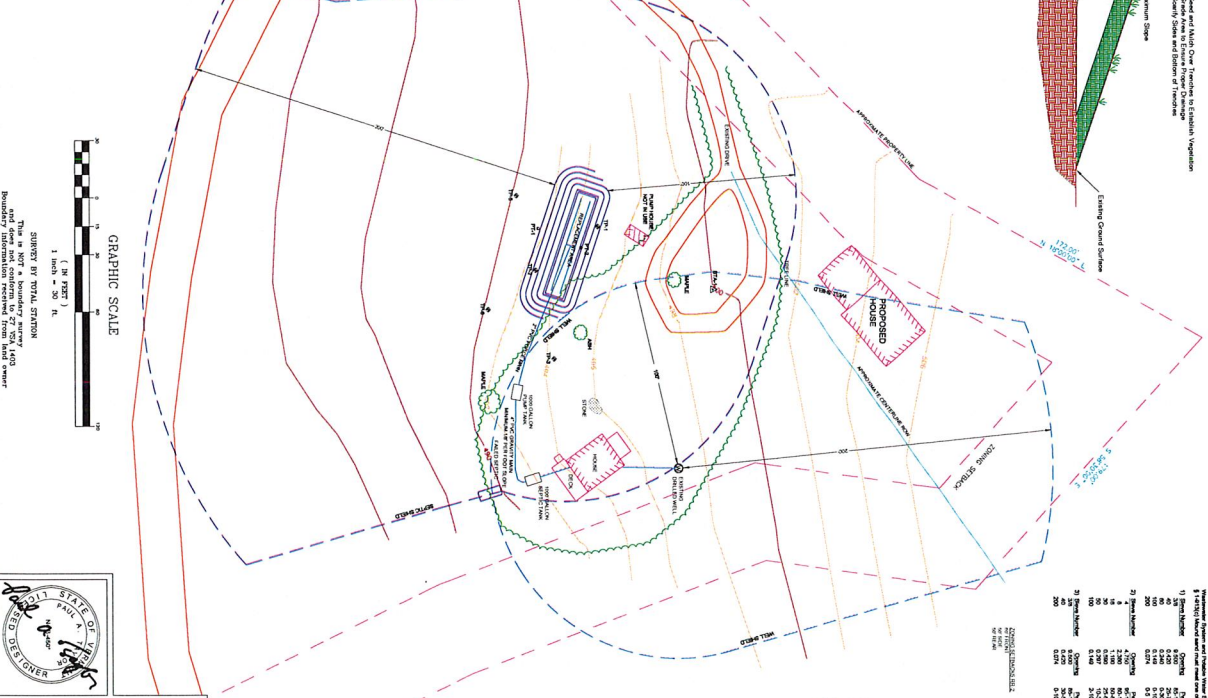
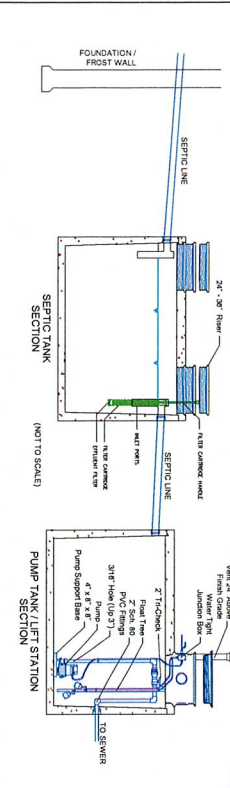
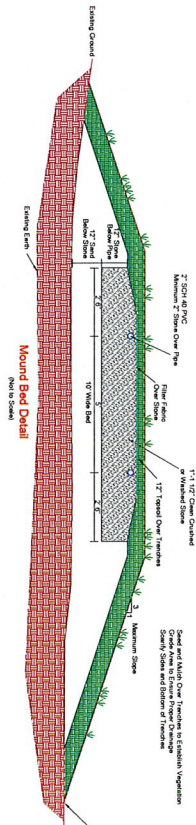
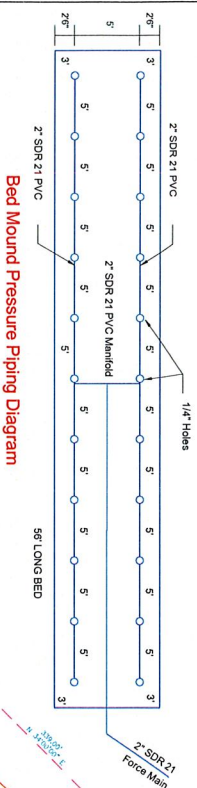
MAXIMUM DENSITY TABLE

ZONING DISTRICT	AREA (ACRES)	UNITS
RR-2	17.25	8
RR-5	55.30	11
TOTAL	72.55 ACRES	* 19 UNITS

# **SOILS INFORMATION**

Final soil report at 11/14 by open pit location

**TS#1**  
 0-12" Dark Brown Fine Sandy Loam  
 12-24" Dark Brown Fine Sandy Loam  
 24-36" Dark Brown Fine Sandy Loam  
 36-48" Dark Brown Fine Sandy Loam  
 48-60" Dark Brown Fine Sandy Loam  
 60-72" Dark Brown Fine Sandy Loam  
 72-84" Dark Brown Fine Sandy Loam  
 84-96" Dark Brown Fine Sandy Loam  
 96-108" Dark Brown Fine Sandy Loam  
 108-120" Dark Brown Fine Sandy Loam  
 120-132" Dark Brown Fine Sandy Loam  
 132-144" Dark Brown Fine Sandy Loam  
 144-156" Dark Brown Fine Sandy Loam  
 156-168" Dark Brown Fine Sandy Loam  
 168-180" Dark Brown Fine Sandy Loam  
 180-192" Dark Brown Fine Sandy Loam  
 192-204" Dark Brown Fine Sandy Loam  
 204-216" Dark Brown Fine Sandy Loam  
 216-228" Dark Brown Fine Sandy Loam  
 228-240" Dark Brown Fine Sandy Loam  
 240-252" Dark Brown Fine Sandy Loam  
 252-264" Dark Brown Fine Sandy Loam  
 264-276" Dark Brown Fine Sandy Loam  
 276-288" Dark Brown Fine Sandy Loam  
 288-300" Dark Brown Fine Sandy Loam



Flow Rate (GPM)	Flow Rate (MGD)	Flow Rate (MGD)	Flow Rate (MGD)
100	0.0014	0.0014	0.0014
200	0.0028	0.0028	0.0028
300	0.0042	0.0042	0.0042
400	0.0056	0.0056	0.0056
500	0.0070	0.0070	0.0070
600	0.0084	0.0084	0.0084
700	0.0098	0.0098	0.0098
800	0.0112	0.0112	0.0112
900	0.0126	0.0126	0.0126
1000	0.0140	0.0140	0.0140

- NOTES**
- 1) Verify all existing conditions on site before construction.
  - 2) Verify all existing conditions on site before construction.
  - 3) Verify all existing conditions on site before construction.
  - 4) Verify all existing conditions on site before construction.
  - 5) Verify all existing conditions on site before construction.
  - 6) Verify all existing conditions on site before construction.
  - 7) Verify all existing conditions on site before construction.
  - 8) Verify all existing conditions on site before construction.
  - 9) Verify all existing conditions on site before construction.
  - 10) Verify all existing conditions on site before construction.
  - 11) Verify all existing conditions on site before construction.
  - 12) Verify all existing conditions on site before construction.
  - 13) Verify all existing conditions on site before construction.
  - 14) Verify all existing conditions on site before construction.
  - 15) Verify all existing conditions on site before construction.
  - 16) Verify all existing conditions on site before construction.
  - 17) Verify all existing conditions on site before construction.
  - 18) Verify all existing conditions on site before construction.
  - 19) Verify all existing conditions on site before construction.
  - 20) Verify all existing conditions on site before construction.
  - 21) Verify all existing conditions on site before construction.
  - 22) Verify all existing conditions on site before construction.
  - 23) Verify all existing conditions on site before construction.
  - 24) Verify all existing conditions on site before construction.
  - 25) Verify all existing conditions on site before construction.
  - 26) Verify all existing conditions on site before construction.
  - 27) Verify all existing conditions on site before construction.
  - 28) Verify all existing conditions on site before construction.
  - 29) Verify all existing conditions on site before construction.
  - 30) Verify all existing conditions on site before construction.
  - 31) Verify all existing conditions on site before construction.
  - 32) Verify all existing conditions on site before construction.
  - 33) Verify all existing conditions on site before construction.
  - 34) Verify all existing conditions on site before construction.
  - 35) Verify all existing conditions on site before construction.
  - 36) Verify all existing conditions on site before construction.
  - 37) Verify all existing conditions on site before construction.
  - 38) Verify all existing conditions on site before construction.
  - 39) Verify all existing conditions on site before construction.
  - 40) Verify all existing conditions on site before construction.
  - 41) Verify all existing conditions on site before construction.
  - 42) Verify all existing conditions on site before construction.
  - 43) Verify all existing conditions on site before construction.
  - 44) Verify all existing conditions on site before construction.
  - 45) Verify all existing conditions on site before construction.
  - 46) Verify all existing conditions on site before construction.
  - 47) Verify all existing conditions on site before construction.
  - 48) Verify all existing conditions on site before construction.
  - 49) Verify all existing conditions on site before construction.
  - 50) Verify all existing conditions on site before construction.
  - 51) Verify all existing conditions on site before construction.
  - 52) Verify all existing conditions on site before construction.
  - 53) Verify all existing conditions on site before construction.
  - 54) Verify all existing conditions on site before construction.
  - 55) Verify all existing conditions on site before construction.
  - 56) Verify all existing conditions on site before construction.
  - 57) Verify all existing conditions on site before construction.
  - 58) Verify all existing conditions on site before construction.
  - 59) Verify all existing conditions on site before construction.
  - 60) Verify all existing conditions on site before construction.
  - 61) Verify all existing conditions on site before construction.
  - 62) Verify all existing conditions on site before construction.
  - 63) Verify all existing conditions on site before construction.
  - 64) Verify all existing conditions on site before construction.
  - 65) Verify all existing conditions on site before construction.
  - 66) Verify all existing conditions on site before construction.
  - 67) Verify all existing conditions on site before construction.
  - 68) Verify all existing conditions on site before construction.
  - 69) Verify all existing conditions on site before construction.
  - 70) Verify all existing conditions on site before construction.
  - 71) Verify all existing conditions on site before construction.
  - 72) Verify all existing conditions on site before construction.
  - 73) Verify all existing conditions on site before construction.
  - 74) Verify all existing conditions on site before construction.
  - 75) Verify all existing conditions on site before construction.
  - 76) Verify all existing conditions on site before construction.
  - 77) Verify all existing conditions on site before construction.
  - 78) Verify all existing conditions on site before construction.
  - 79) Verify all existing conditions on site before construction.
  - 80) Verify all existing conditions on site before construction.
  - 81) Verify all existing conditions on site before construction.
  - 82) Verify all existing conditions on site before construction.
  - 83) Verify all existing conditions on site before construction.
  - 84) Verify all existing conditions on site before construction.
  - 85) Verify all existing conditions on site before construction.
  - 86) Verify all existing conditions on site before construction.
  - 87) Verify all existing conditions on site before construction.
  - 88) Verify all existing conditions on site before construction.
  - 89) Verify all existing conditions on site before construction.
  - 90) Verify all existing conditions on site before construction.
  - 91) Verify all existing conditions on site before construction.
  - 92) Verify all existing conditions on site before construction.
  - 93) Verify all existing conditions on site before construction.
  - 94) Verify all existing conditions on site before construction.
  - 95) Verify all existing conditions on site before construction.
  - 96) Verify all existing conditions on site before construction.
  - 97) Verify all existing conditions on site before construction.
  - 98) Verify all existing conditions on site before construction.
  - 99) Verify all existing conditions on site before construction.
  - 100) Verify all existing conditions on site before construction.

**Replacement Septic System for**  
**Nancy Dumont**  
 124 Thayer Hill Road  
 Stowe, VT 05672

**Project Location:** 241/- Acres, 1241 Thayer Hill, Stowe

**Job Number:** 2014-09

**Drawing File:** 2014-09 Dumont

**Scale:** 1"=30'

**Date:** July 11, 2016

**Sheet:** 1 of 1

**TRUHLER DESIGN, LLC**  
 124 Thayer Hill Road  
 Stowe, VT 05672

**Design:** Paul A. Taylor  
**License:** Designer Type B Number 450





**Parcel ID 10-024.000 Tax Map # 07-180.000**  
**1241 Taber Hill Rd**

1 inch = 300 ft.





