

Filed July 14, 1991 at 7:58 PM.

Attch

Town Clerk

No. 34-8

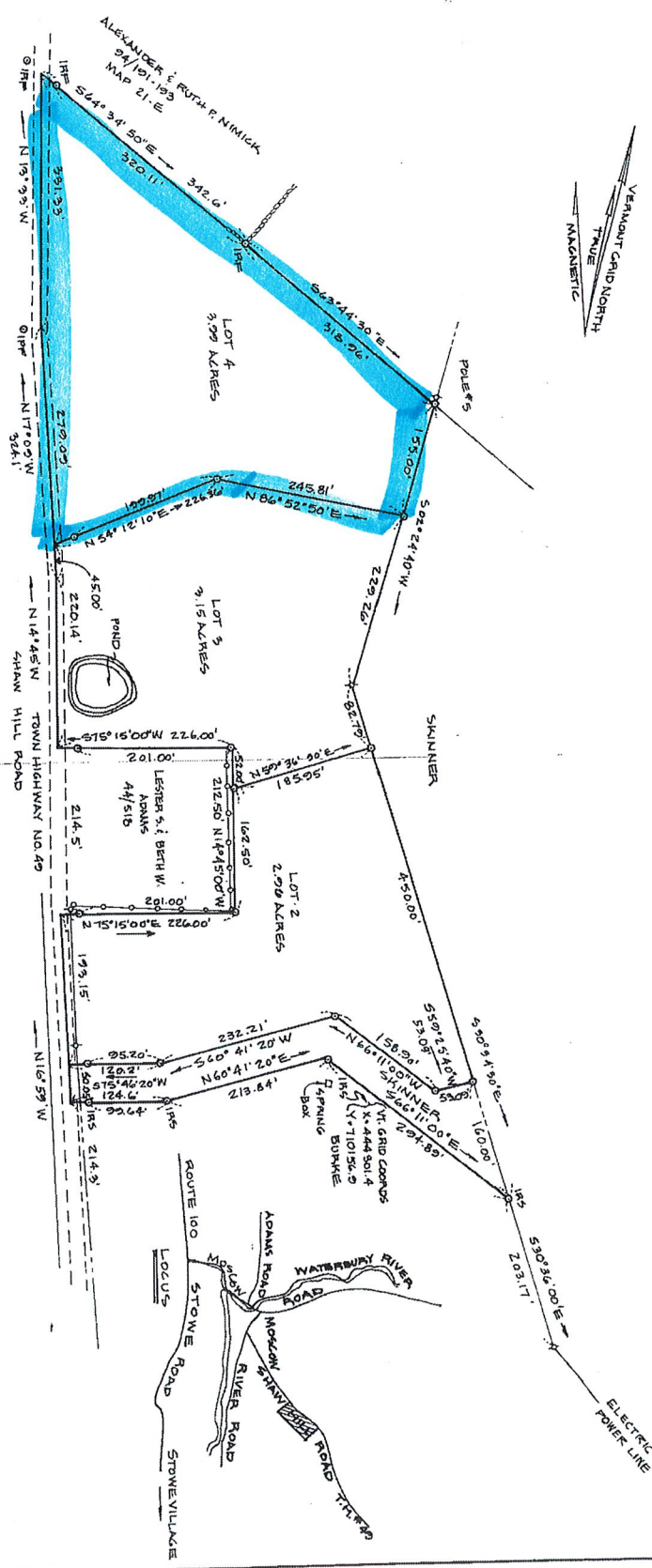
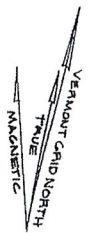
Page 120

NOTES:

- BEARINGS AND DISTANCES WERE COMPUTED FROM A CLOSED TRAVERSE. MEASUREMENTS WERE MADE WITH THEODOLITE, TAPE, AND ELECTRONIC MEASURING DEVICE WITH AN ACCURACY RESULTING IN A RATIO OF ERROR OF 1/33500.
- BEARINGS ARE BASED ON THE MERIDIAN OF THE STATE OF VERMONT GRID COORDINATE SYSTEM.
- DRAFTED BY: CHARLOTTE FRANZEN CARRALDI

LEGEND:

- FENCE
- STONE WALL
- IRON ROD
- ELECTRIC POWER POLE
- AND WIRES



THE SUBDIVISION REGULATIONS OF THE TOWN ARE A PART OF THIS PLAT AND APPROVAL OF THIS PLAT IS CONTINGENT ON COMPLETION OF ALL THE REQUIREMENTS OF SAID SUBDIVISION REGULATIONS, EXCEPTING ONLY ANY VARIANCES OR MODIFICATIONS MADE BY THE COMMISSION AND ATTACHED HERETO SECTION 602.

THIS SURVEY WAS BASED ON THE PHYSICAL EVIDENCE FOUND, INFORMATION IN THE LAND RECORDS, AND THE INSTRUCTIONS OF JOHN P. SKINNER, CHARLES BURNHAM, INC.

APPROVED BY: *Paul Clancy*
CHAIRMAN, PLANNING COMMISSION

DATE: 6-22-81

David W. Fry

80-29

LOTS 2, 3 & 4
SURVEY OF LAND OF
JOHN P. SKINNER
SHAW HILL - STOWE, VERMONT

REVISOR JULY 7, 1991
JUNE 1991

SCALE: 1 INCH = 100 FEET

0 50 100 200 400 800 FEET
0 50 100 200 400 METERS