



# PALL SPERA COMPANY

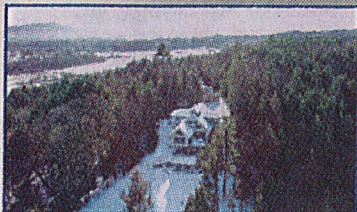
REALTORS, LLC

WWW.PALLSPERA.COM

65-5 NORTHGATE PLAZA - P.O. BOX 507

MORRISVILLE, VERMONT 05661

MAIN 802.888.1102 | TOLL FREE 877.888.4679



### "Bonaventure" Morristown

Exquisite 33-acre country estate comprised of a 3-BR main house, 2-BR guest cottage & a 3-bay garage with apartment. Overlooking waterways & mountain vistas and located in the Ten Bends community with excellent fishing & hiking trails.

(802) 253-9771

\$1,450,000



### Stately Beauty Awaits

Enjoy mountain views off the back deck of this stately home. Open floor plan from the beautiful kitchen into the dining room, master bedroom with large master bath with whirlpool tub, plus 2 more bedrooms. Convenient Hyde Park location.

(802) 888-1102

\$300,000



### Lovely, Bright Home in Elmore

This lovely, bright 2,800± sq. ft. home looks out to Lake Elmore and Elmore Mountain in the distance. 3 Bedrooms, 2 baths, open main floor plus a large deck - perfect for entertaining. Easy access to Morrisville, Stowe, Montpelier and St. Johnsbury.

(802) 253-1806

\$299,000



### Build Your Dream Mountain Home!

This 5± acre Elmore lot has spectacular mountain views which could be improved with additional clearing. Power is on site and driveway to the private house site has been roughed-in. Elmore Lake, Stowe, and Morristown amenities are nearby.

(802) 253-9771

\$159,000



### Picturesque Lot Near Smugglers' Notch

11.7± Acre lot approximately two minutes away from Smugglers' Notch, located on a picturesque dead end road with exceptional views of the ski ways and peak of Mount Mansfield. Truly an outdoor enthusiast's dream.

(802) 253-1806

\$134,999



### Beautiful 59-Acre Parcel

This 59± acre parcel offers a convenient and private setting. Build your home in the woods, surrounded by beaver ponds and protected woodlands or up on a hill with views toward Mt. Elmore. The best of a Vermont setting!

(802) 253-1806

\$120,000



### Fields & Streams

52± Acres of beautiful VT certifiable organic hayfields, meadows & woods. Abutting hundreds of acres of open space with potential views of the Willoughby Gap. Permitted for 2 different building sites. Easy access to Interstate 91, ski resorts and VAST trail.

(802) 888-1102

\$84,900

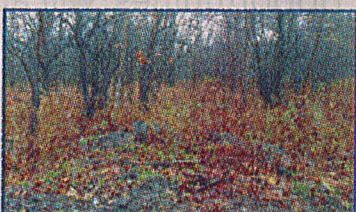


### Amazing Single Wide Home

This 2 bedroom, 1 bath home is close to all that Johnson has to offer. The kitchen and living room are open concept with lots of natural light. On the back of the home is a large deck. This home is subject to approval by the park owners.

(802) 888-1102

\$55,000



### Sweet 2-Acre Lot!

2± Acre lot on Elmore Pond Road, just 2 miles to Elmore village, 30 minutes to Montpelier, Morrisville and Stowe just 5-15 minutes away! Power is at the road and septic plans are available. This one won't last long!

(802) 888-1102

\$40,000



NANCY DURAND • PENNY MASON-ANDERSON • NANCY PRITCHARD  
LAUREL HOULE • CASEY GRONDIN • ANGELA LAMBERT • MONICA HEATH • BOB DURAND



google/MSRwbu





## PALL SPERA COMPANY

REALTORS, LLC

WWW.PALLSPERA.COM

1800 MOUNTAIN ROAD, STOWE - 802.253.9771

62 MAIN STREET, STOWE - 802.253.1806

65-5 NORTHGATE PLAZA, MORRISVILLE - 802.888.1102



### Bonaventure - Morristown

Exquisite 33-acre estate comprised of a 3 bedroom main house, 2 bedroom guest cottage and a 3-bay garage with apartment. Overlooking waterways and mountain vistas and located in the Ten Bends community with excellent fishing and hiking trails.

(802) 253-9771

\$1,450,000



### Park Street

Excellent location for two exceptional buildings in the heart of Stowe Village. A single-family bungalow and multi-use commercial building with lift and heating/plumbing improvements. Ready to occupy as a commercial enterprise or as an elegant artistic residence.

(802) 253-9771

\$990,000

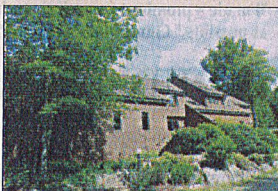


### Weeks Hill Estate

A remodeled 5-BR cape with a bright and comfortable floor plan featuring a living room with 2 seating areas, a classic brick FP, and a finished lower level. A stocked pond completes the idyllic 3.5± AC setting. Just minutes from skiing & Stowe Village.

(802) 253-9771

\$795,000



### Spacious Stonybrook Condominium

One of the largest condo units in the desirable enclave of Stonybrook. This unit is slightly over 4,000± square feet with 5 bedrooms, 5 bathrooms with furniture included. Surrounded by 160± acres of woods ponds and trails.

(802) 253-9771

\$499,000



### Home with Acreage

This property offers a Sugarhouse, winding brook, 184.5 acres, 2 outbuildings & 2-bedroom 2-bath home w/attached 2-car garage & full basement. The parcel has road frontage on 3 roads and offers endless outdoor recreational opportunities.

(802) 888-1102

\$460,000



### Immaculate Home - Excellent Location

Private home on 6.5± acres located off a paved road within 5 minutes of Stowe Village. Daylight floods the main living space from the large solarium. The conveniences of a main floor bedroom, radiant heat, mudroom and an attached 2-car garage are yours to enjoy.

(802) 253-1806

\$400,000

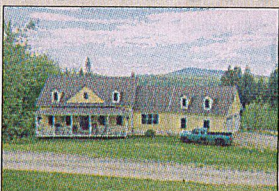


### Luxurious Stowe Village Condo

Beautiful Stowe Village 3-BR, 4-BA condo. Truly a luxury home with granite, stainless steel, hardwood and impressive details. Walk to everything, including the bus stop and rec path. Easy access to the Sunset Rock conservation land - rare in Stowe Village.

(802) 253-1806

\$399,500

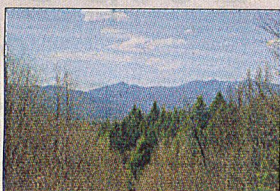


### Beautiful Colonial

On 10 acres, 3-BR, 3-BA Colonial, large living area with vaulted ceiling, gourmet kitchen with island, formal dining area overlooks covered porch with mountain views, master bath with whirlpool tub, hardwood stairway to 2nd floor, 2-car attached garage.

(802) 888-1102

\$399,000

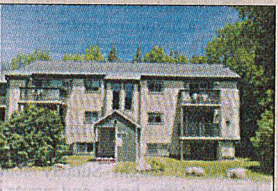


### Beautiful 100+ AC land Parcel

This beautiful rural 109± acre parcel is easily accessible yet close to recreation as well as shopping and I-89. Mountain views, fields, woodlands - also ideal as a horse farm. Adjacent to extensive state hiking areas. Development potential.

(802) 253-9771

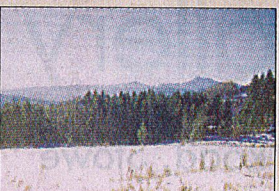
\$350,000



**2-BR Condo In Smugglers' Notch Resort**  
Spacious 2 bedroom condo in the heart of Village East Community at Smugglers' Notch Resort. 56 Riverside is centrally located to the pools, restaurants, stores, Funzone 2.0 and the ski slopes. Fully furnished and enrolled in the Smugglers rental program.

(802) 253-1806

\$200,000



**Beautiful View Parcel In Waterbury Center**  
Exceptional view parcel with 5.2± acres. Will be permitted for a 4 bedroom home. Roughed-in driveway and electric, phone and cable to lot line. Easily accessible location close to winter and summer recreation and I-89.

(802) 253-9771

\$160,000



### Trapp Family Lodge Timeshare

Enjoy 4 weeks per year at this amazing 3 bedroom chalet, set within the Trapp Family Lodge in Stowe, Vermont. Experience the finest in 4-season alpine living and direct access to recreational pursuits. Access to a luxury property exchange available.

(802) 253-1806

\$70,000

LUXURY  
PORTFOLIO  
INTERNATIONAL



LEADING REAL ESTATE  
COMPANIES OF THE WORLD



goo.gl/4GQ4oc