



PALL SPERA COMPANY REALTORS, LLC

WWW.PALLSPERA.COM

1800 MOUNTAIN ROAD, STOWE - 802.253.9771

62 MAIN STREET, STOWE - 802.253.1806

65-5 NORTHGATE PLAZA, MORRISVILLE - 802.888.1102



Extraordinary Stowe Estate

Stunning country estate with expansive mountain views just 2 minutes from Stowe Village. Excellent craftsmanship & finishes, open concept floor plan, chef's kitchen, main floor master suite, lower level media room with sauna plus lush grounds & gardens.

(802) 253-1806

\$2,400,000

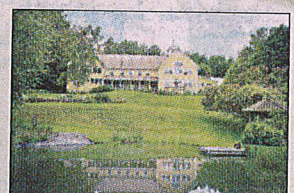


Magical Setting In Robinson Springs

Exceptional 23.5± acre Stowe estate with 5 bedrooms and 6 baths. Magnificent mountain views and extensive perennial gardens enhance the magical setting of this private oasis, complete with swimming pool. The 23.5± acres is comprised of two parcels.

(802) 253-9771

\$1,950,000

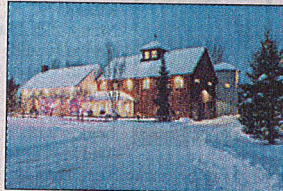


Very Special Stowe Property

A lovely country home on 28± acres with miles of trails, 2 ponds, orchards, lovely gardens, stone walls, 2 patios and mountain views. The 6500± sq. ft. home has 8 bedrooms, 2 kitchens, 4 wood-burning fireplaces PLUS a 2100± sq. ft. barn/garage.

(802) 253-9771

\$1,500,000

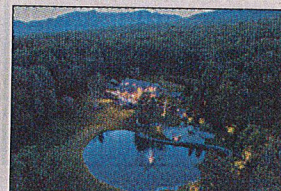


Luxurious Stowe Residence

A contemporary Vermont home located in a highly desirable enclave south of Stowe. The approx. 4,000 square foot home is fully furnished and equipped with 5 bedrooms and 6 baths. Meticulous attention to detail and high end finishes both inside and out.

(802) 253-1806

\$1,495,000



Edson Hill Estate

Spectacular 10-acre Edson Hill Estate from the private drive to the awesome landscaped grounds, stonework and twin ponds. This 5500± square foot contemporary residence is dramatic. The location is very private but in Stowe's most asked for address.

(802) 253-9771

\$1,175,000



The Cabin In the Woods

Spectacular Stowe residence set upon 20+ private acres with a 2-acre pond. The 4 bedroom home features wood floors, stone fireplace, beamed ceilings, gourmet kitchen, granite counter tops, butler's pantry, patio, covered porch and attached 3-car garage.

(802) 253-9771

\$899,000

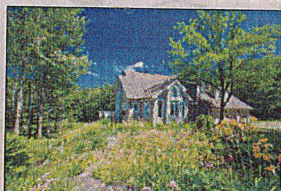


Renovated Stowe Home

Completely renovated 3-BR, 4-BA home. Quality finishes, from professional gas range with copper hood, granite counter tops and custom cabinetry in the kitchen, to marble in the baths with slate and glass tile showers. Set on 3± AC with direct Mt. Mansfield views.

(802) 253-1806

\$799,000



Spacious Home in Waterbury Center

Well built home in very desirable neighborhood. Very private. High quality finishes throughout. Excellent design and flow. New roof with copper flashing. Nicely landscaped site with ponds, waterfalls, and gardens that bloom all summer.

(802) 253-9771

\$775,000

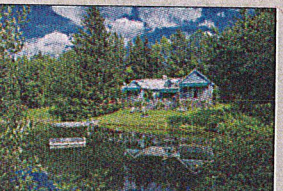


A Magical Setting

A beautiful picturesque setting with ultimate privacy on 10± acres... well maintained 4 bedrooms home with abundant natural light, maple floors, granite counter tops, birch cabinets, wood burning fireplace and more. Ideal for horses.

(802) 253-9771

\$685,000

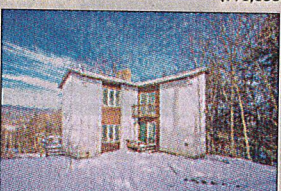


Pinnacle Road, Stowe

Wonderful 3 bedroom, 3 bath Stowe Hollow property offers 2,500+ sq. ft. of living spaces, a beautiful pond and Mountain views. Located in a highly desirable neighborhood with hiking trails nearly in your backyard and only minutes from Stowe Village.

(802) 253-9771

\$595,000



Mansfield View

Updated and efficient 4 bedroom home in a terrific neighborhood! Offering winter views of the Mansfield Range, this 1.3± acre lot is close to the village, shops and the rec path. Ideal as a vacation retreat or full time residence.

(802) 253-9771

\$425,000



Modern Sylvan Woods Condo

This lovely 2-BR, 1,000+ sq. ft. condo offers convenient mountain town living. The lovely kitchen opens toward the rest of the living space and the basement could be finished to your taste. Just minutes from shops, restaurants, Mt. Mansfield and 189.

(802) 253-1806

\$145,000

LUXURY
PORTFOLIO
INTERNATIONAL



LEADING REAL ESTATE
COMPANIES OF THE WORLD



goo.gl/ys9UPz



George Nelson (802) 760-3137

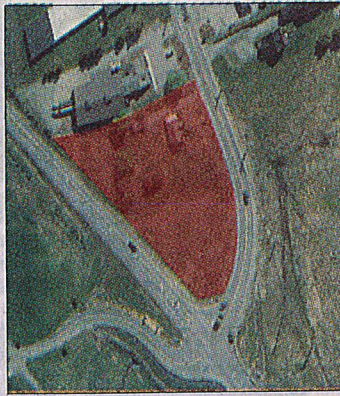
Ed Stahl (802) 760-3151

Pall Spera (802) 760-3111

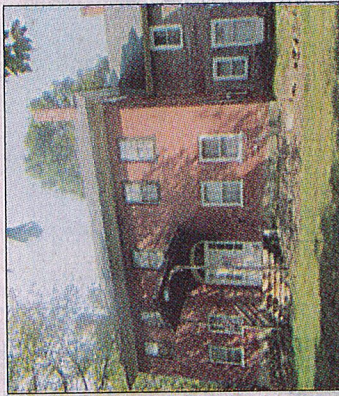
www.pallsperra.com/commercial



Morristown \$12.00/SQ. FT. LEASE
Renovated, Portland St. frontage.
Ed Stahl (802) 760-3151



Morristown LONG TERM LEASE
1.53± Acres along Route 100 Bypass.
George Nelson (802) 760-3137



Stowe \$650,000
8-Unit apartment building on 3+ acres.
George Nelson (802) 760-3137



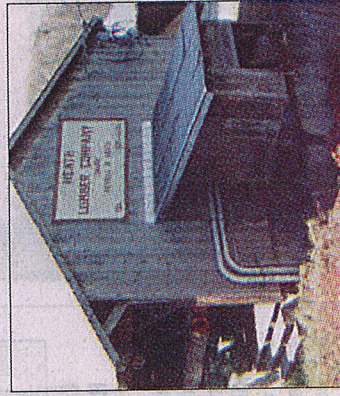
Stowe \$379,000
1,500± Sq. Ft. of space. Currently offices.
George Bambara (802) 760-3131



Jeffersonville \$2,775,000
Thriving business complex. Financials avail.
George Nelson (802) 760-3137



Hyde Park \$725,000
Three commercial buildings - 10,300+ SF.
George Bambara (802) 760-3131



Hyde Park \$600,000
Fully operational sawmill on 15± acres.
George Bambara (802) 760-3131



Hardwick \$4.83/SQ. FT. LEASE
4100± Sq. Ft. on 3.5 Acres. High visibility.
George Nelson (802) 760-3137