



# PALL SPERA COMPANY REALTORS, LLC

WWW.PALLSPERA.COM

1800 MOUNTAIN ROAD, STOWE - 802.253.9771

62 MAIN STREET, STOWE - 802.253.1806

65-5 NORTHGATE PLAZA, MORRISVILLE - 802.888.1102

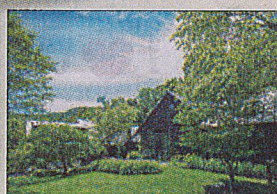


## Horizons, Stowe

The name says it all! The views are panoramic and spectacular. The home has 6 bedrooms, perfect for family and friends. The grounds include a sloping lawn, fields, woods, pond and tennis court. Great, convenient location.

(802) 253-9771

\$999,000



## Side Hill Farm, Stowe

A quintessential VT property; private and pastoral yet carefully modernized. Original character maintained in wood floors, beamed ceilings and romantic fireplaces. Landscaped by a professional architect, complete with waterfall.

(802) 253-9771

\$849,000

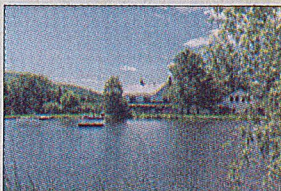


## Peaceful Mountain Living ~ Stowe

Enjoy lovely surroundings from this meticulously maintained 4,867± sq. ft. home with fine detailing, 3 fireplaces, granite counter tops, cherry cabinets & floors. 2 master suites & a 2 BR apartment. Beautiful 3± acre setting abutting Stowe Land Trust.

(802) 253-1806

\$825,000



## Stowe Hollow Farmhouse

This classic Vermont farmhouse, built in 1835, has been tastefully updated and renovated. Situated in the coveted Stowe Hollow neighborhood on 4.5± acres of hillside, the 4 BR, 4 BA home features 270-degree views of the Worcester Mountain Range.

(802) 253-1806

\$698,000

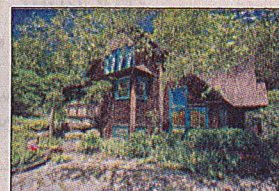


## Stowe Village Carriage House

Unique historic 5 BR, 5 BA house in the heart of Stowe village. A true treasure with contemporary facilities, office/study, 2-car garage and much more. All furnishings are included. Central location makes it ideal for vacation rentals.

(802) 253-9771

\$695,000

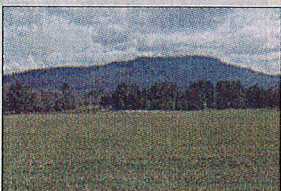


## Breathtaking Setting in Waterbury Center

This custom home offers comfortable, compact multi-level living on 10.3± acres with stunning perennial gardens, stone walkways, sculptures, walking trails and views toward Camel's Hump. Location is equidistant to the villages of Stowe and Waterbury.

(802) 253-1806

\$595,000

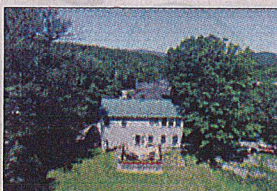


## Land Abutting Copley Hospital

Flat 3.7± acre parcel with beautiful views, abutting Copley Hospital/Copley Campus and Copley Country Club. In Morrisville's 'Special Use District' - ideal for a professional office & other healthcare or non-healthcare uses. Additional acreage available.

(802) 253-1806

\$485,000

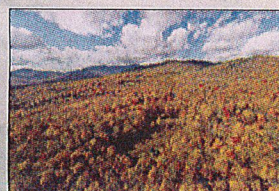


## Luxurious Stowe Village Condo

Beautiful Stowe Village 3 BR, 4 BA condo. A luxurious home with granite, stainless-steel, hardwood and impressive details. Walk to everything. Including the bus stop and Recreation Path. Easy access to the Sunset Rock conservation land.

(802) 253-1806

\$415,000



## Robinson Springs, Stowe

Large, private lot in the exclusive Robinson Springs neighborhood. Enjoy Worcester Mountain views along with direct access to Town of Stowe lands for hiking, biking, skiing and other recreational pursuits. Soil tests indicate potential for a 5-bedroom home.

(802) 253-1806

\$375,000

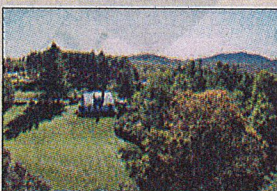


## Stately Beauty Awaits!

Enjoy mountain views off the back deck of this stately home. Open floor plan from the beautiful kitchen into the dining room, master bedroom with large master bath with whirlpool tub, plus 2 more bedrooms. Convenient Hyde Park location.

(802) 888-1102

\$300,000

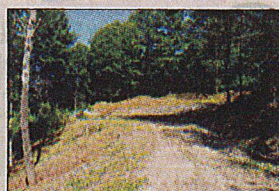


## Your Vermont Getaway

This light-filled contemporary farmhouse is turn-key, offered fully furnished. 2,372± sq. ft. 3 BR home has been finished with a commitment to Vermont charm, set upon 10± private acres with panoramic views. Near summer and winter recreation.

(802) 253-1806

\$295,000



## Cleared and Permitted Lot

Private cleared building site with bright sun-drenched southwesterly exposure conveniently located on the desirable south end of Stowe for quick access to the Village and I-89. Approved Waste Water System and Potable Water Supply Permit for a 4 BR home.

(802) 253-9771

\$99,000

LUXURY  
PORTFOLIO  
INTERNATIONAL



LEADING REAL ESTATE  
COMPANIES OF THE WORLD



goo.gl/4GYTde





# PALL SPERA COMPANY

REALTORS, LLC

WWW.PALLSPERA.COM

65-5 NORTHGATE PLAZA - P.O. BOX 507

MORRISVILLE, VERMONT 05661

MAIN 802.888.1102 | TOLL FREE 877.888.4679



### The Willoughby Inn and Cottages

This jewel box inn on the shores of Lake Willoughby reflects the beauty of VT's Northeast Kingdom. Immaculately kept and operated, the property enjoys 480' of shore front and is adjacent to the VAST trails.

(802) 253-9771

\$1,675,000



### Custom Contemporary Home

Custom contemporary home with clean lines and one-of-a-kind floor plan! The natural light welcomes all who enter, the open floor plan boasts state of the art kitchen, walls of windows, gas fireplace, radiant heat and 10 ft ceilings.

(802) 888-1102

\$595,000



### Beautiful Colonial

On 10± acres, 3 bedroom, 3 bath colonial, large living area with vaulted ceiling, gourmet kitchen with island, master bath with whirlpool tub, hardwood stairway to second floor, covered porch with mountain views, 2-car attached garage.

(802) 888-1102

\$399,000



### Country Living in Waterville

Charming, newly renovated 1850's colonial home on 3± acres with mountain views, comprised of a 3-BR, 2 full BA home and a 2-BR, 1.5-BA in-law apartment. Enjoy the exposed beams and open living spaces, plus a deck with access to the level yard.

(802) 253-1806

\$350,000



### Move In Ready Home

Privacy on 41± acres with 3 bedrooms including a main floor master and 2 upstairs bedrooms, new stainless steel appliances, breakfast bar, dining area and large living room. Sunny foyer and covered porch with mountain views!

(802) 888-1102

\$329,000



### Adorable Camp

Adorable camp with 122' of beach frontage on Lake Eden. Large screened porch, gorgeous mountain views, beautiful stone wall with built-in storage and attached 1-car garage. Swimming, fishing and hiking steps from your door! Sold "as is".

(802) 888-1102

\$250,000



### Simply Charming!

Warm and inviting cedar-sided home on 1.5± acres with a large back lawn and 2-car garage. This accessible home offers exterior ramping, extra large hallway, one-level living, master on main and kitchen and bath set up for moving around space.

(802) 888-1102

\$180,000



### Sweet County Lot

3.2± acres in a sought after neighborhood. Power at road, surveyed and ready to go! Just in time for building season. Start now and be in for June! Very close to the Elmore/Stowe line and minutes to Route 100. Quiet end of cul-de-sac location.

(802) 888-1102

\$50,000



### One Level Living in Milton

This 2 bedroom home is located close area amenities and a short distance from I-89. Enjoy lots of natural light and a truly cozy feel. The kitchen/dining room is open to the living room area with cathedral ceilings that make it feel more spacious.

(802) 888-1102

\$40,000



NANCY DURAND • PENNY MASON-ANDERSON • NANCY PRITCHARD  
LAUREL HOULE • CASEY GRONDIN • ANGELA LAMBERT • MONICA HEATH • BOB DURAND



<https://goo.gl/Yu8hhG>