



**PALL SPERA  
COMPANY**  
REALTORS, LLC

**WWW.PALLSPERA.COM**

1800 MOUNTAIN ROAD, STOWE - 802.253.9771

62 MAIN STREET, STOWE - 802.253.1806

65-5 NORTHGATE PLAZA, MORRISVILLE - 802.888.1102

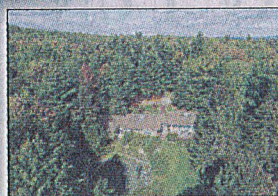


#### Geometry In the Mountains

Multi-level 5-bedroom, 5-bath residence on 6.6+ acres with gorgeous views towards Camel's Hump. The interior features a greenhouse, elevator, indoor basketball half court, 2 laundry rooms, and an in-law suite with separate screened porch.

(802) 253-9771

\$970,000

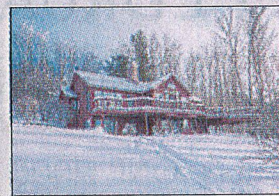


#### Family Retreat In Stowe

This is a BIG house - 7 bedrooms, 5.5 baths - in a great neighborhood! Good views available with clearing. Located on a town road; no HOA fees! The location is close to town, trails, and skiing. House is well-built and has many recent upgrades.

(802) 253-9771

\$925,000



#### Sunset Heights, Stowe

Country elegant residence with estate-like features. 4 bedrooms and lower-level family room. Private location south of Stowe Village. This gem has a pool, mature landscaping, and direct Mt. Mansfield views...the epitome of Stowe country living.

(802) 253-9771

\$819,000



#### Sugar House Hill Location

Well maintained 4,268+ sq. ft. contemporary cape located in a wonderful and private neighborhood. Includes an updated chef's kitchen, great room, 5 bedrooms, fireside reading area, lush perennial gardens and sun-drenched 20x40 pool.

(802) 253-9771

\$698,000



#### Pinnacle Road, Stowe

Wonderful 3 bedroom, 3 bath Stowe Hollow property offers 2,500+ sq. ft. of living space, a beautiful pond and mountain views. Located in a highly desirable neighborhood with hiking trails and only minutes to Stowe Village.

(802) 253-9771

\$595,000



#### Custom Contemporary Home

Custom contemporary home with clean lines and one-of-a-kind floor plan! The natural light welcomes all who enter; the open floor plan boasts a state-of-the-art kitchen, walls of windows, gas fireplace, radiant heat, and 10 ft. ceilings.

(802) 888-1102

\$595,000



#### Stowe Village Condo

This pristine, full-of-light corner unit with a welcoming front porch is a must-see! Boasting 2 bedrooms, 3 baths, custom work throughout, gas fireplace, and a finished lower level, this home is close to all Stowe Village conveniences, including restaurants, shops and school.

(802) 888-1102

\$410,000



#### Unique Stowe Property

This 4 BR antique Vermont farmhouse was once owned by renowned contemporary artist Stan Marc Wright. Updated kitchen with laundry, upgraded baths and refinished pine floors. Truly unique with a one-room school house, blacksmith's shop, barn and shed.

(802) 253-1806

\$399,000

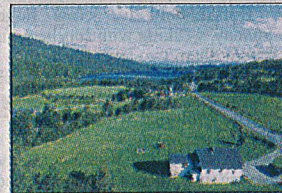


#### Montpelier Gem

Overlook a century-old farm from this well-maintained 3 bedroom, 2 bath home. Wonderful living inside...enjoy fireplaces in the great room and family room and a finished lower level. Gracious yard with beautiful gardens on a prestigious corner lot.

(802) 253-9771

\$395,000

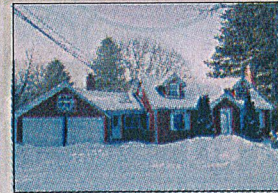


#### Lovely, Bright Home In Elmore

This lovely, bright 2,800+ sq. ft. home looks out to Lake Elmore and Elmore Mountain in the distance. 3 Bedrooms, 2 baths, open main floor plus a large deck - ideal for entertaining. Easy access to Morrisville, Stowe, Montpelier and St. Johnsbury.

(802) 253-1806

\$299,000



#### Charming Cape Home

Charming 3 BR, 2 BA home on 1+ acre. Lots of living space...large eat-in kitchen, wood stoves in both formal dining area and family room and newly renovated sunroom. A 3-season porch, large deck and attached 2-car garage complete the property.

(802) 888-1102

\$275,000



#### Furnished Condo at Smugglers' Notch

Furnished 1 BR condo in Smugglers' Notch Resort - next to Funzone 2.0 and Courtside Pool. In the "Village East Community" with indoor pools, hot tubs, play park, The Country Store and Treasures Child Care. Exciting activities right from your door!

(802) 253-1806

\$85,000

**LUXURY  
PORTFOLIO**  
INTERNATIONAL



LEADING REAL ESTATE  
COMPANIES OF THE WORLD



goo.gl/3kjDRB



# PALL SPERA COMPANY REALTORS, LLC

65-5 NORTHGATE PLAZA - P.O. BOX 507  
MORRISVILLE, VERMONT 05661  
MAIN 802.888.1102 | TOLL FREE 877.888.4679



**The Essence of Vermont Country Living**  
This 522.9± acre VT homestead is fully self-sufficient and off-the-grid. The 2,496± sq. ft. log cabin has 4 BR and 3 BA. 6,000 Maples are currently tapped, with potential for thousands more. Trails, brooks, waterfalls and mountain views!  
(802) 253-1806 \$2,200,000



**Picturesque New England Homestead**  
Enjoy 110± acres of stunning pastures, meadows, forest, views and 3 ponds in Groton. 3-Story classic red barn complements the 4-BR farmhouse. A charming site for a hobby farm, B&B, wedding venue, or a private escape. VAST trail access.  
(802) 253-1806 \$399,000



**Valley View Farm**  
Special conserved farm with large barn and 3 apartment farmhouse complex - sugar house, meadows and woods, Current Use and VT Land Trust conservation. Located 2 miles from Stowe with convenient access I-89 as well.  
(802) 253-9771 \$850,000



**Private Cedar Log Home**  
Reconnect with nature in this private cedar log home with pond and waterfall on 25± acres. Home offers abundant natural light, main floor master with large walk-in closet, cozy loft, finished basement, and 2-bay garage with large workshop & storage.  
(802) 888-1102 \$300,000



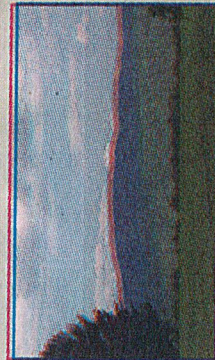
**Amazing Acreage in Elmore!**  
FIELDS, FOREST and VIEWS! 302± Acre parcel with complete serenity and beauty. Walk the wooded trails, fish in the stream or enjoy the sunset. Quaint Elmore Village is close by. Selectively logged with views! Ideal horse country!  
(802) 888-1102 \$650,000



**Opportunity Awaits**  
Village Victorian, circa 1885, on a double lot. 5-Bedroom home boasts welcoming covered porches, 9 ceilings, 2 fireplaces, hardwood, tile & slate floors. Spacious cherry kitchen with granite island. Walk to the village of Morrisville!  
(802) 888-1102 \$275,000



**Hill Top Country Home**  
This home offers lots of light, 3 levels of living space, 3 bedrooms/3 baths and office with closet. 10± Acres with wonderful Mt. Mansfield views. A screened-in porch, stone patio, and a balcony offer additional opportunities for outdoor enjoyment.  
(802) 888-1102 \$265,000



**A True Piece of Vermont!**  
59± Surveyed acres with lovely views and stone wall boundary. Shopping land with sugar house and small sugar bush with 3500 possible taps and frontage on 2 roads. Approximately 10 acres of open field. Woods manicured for optimal sugaring.  
(802) 888-1102 \$198,500



**Brooklyn Heights Condominium**  
This 2-BR, 2-BA condo is a gem! Bright kitchen, open concept living and dining areas and a deck off the dining area. Full basement offers storage space or additional living space if needed. Close to all Morristown amenities.  
(802) 888-1102 \$150,000



888.874.5114



NANCY DURAND • TERRY WILSON-ANDERSON • NANCY BUTCHARD  
LAUREL HOULE • CASEY GRONDIN • ANGELA LAMBERT • MONICA HEATH • BOB DURAND