



## PALL SPERA COMPANY

REALTORS, LLC

WWW.PALLSPERA.COM

1800 MOUNTAIN ROAD, STOWE - 802.253.9771

62 MAIN STREET, STOWE - 802.253.1806

65-5 NORTHGATE PLAZA, MORRISVILLE - 802.888.1102

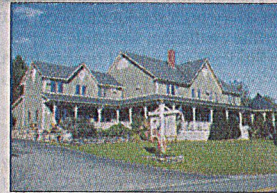


### Magical Setting In Robinson Springs

Exceptional 23.5± acre Stowe estate with 5 bedrooms and 6 baths. Magnificent mountain views and extensive perennial gardens enhance the magical setting of this private oasis, complete with swimming pool. The 23.5± acres is comprised of two parcels.

(802) 253-9771

\$1,950,000

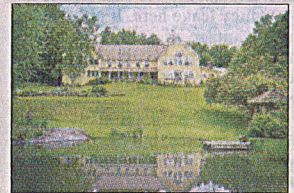


### The Willoughby Inn and Cottages

This jewel box Inn on the shores of Lake Willoughby reflects the pristine beauty of Vermont's Northeast Kingdom. Immaculately kept and operated, the property enjoys 460 feet of shore front and is adjacent to the VAST trails.

(802) 253-9771

\$1,875,000



### Quintessential Vermont

A lovely country home on 28± acres with miles of trails, 2 ponds, orchards, lovely gardens, stone walls, 2 patios and mountain views. The 6500± sq. ft. home has 8 bedrooms, 2 kitchens, 4 wood-burning fireplaces PLUS a 2100± sq. ft. barn/garage.

(802) 253-9771

\$1,500,000

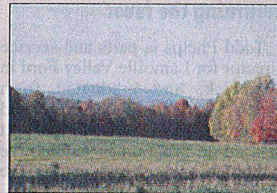


### Side Hill Farm, Stowe

A quintessential VT property. Private, pastoral 17± acre setting. Carefully modernized while maintaining the original character in wood floors, beamed ceilings and romantic fireplaces. Professionally landscaped with beautiful gardens, waterfalls and ponds.

(802) 253-9771

\$849,000

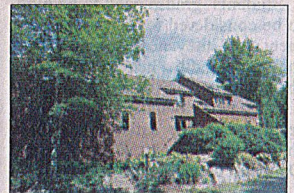


### Amazing Acreage In Elmore

FIELDS, FOREST and VIEWS! 302± Acre parcel with complete serenity and beauty. Walk the wooded trails, fish in the stream, enjoy beautiful sunsets. Quaint Elmore Village is close by. Selectively logged with mountain views. Ideal horse country!

(802) 888-1102

\$650,000

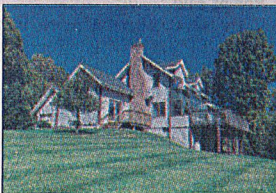


### Spacious Stonybrook Condominium

One of the largest condo units in the desirable enclave of Stonybrook. This unit is slightly over 4,000 square feet with 5 bedrooms, 5 bathrooms and is offered furnished. Convenient location, surrounded by 160 acres of woods, ponds and trails.

(802) 253-9771

\$499,000

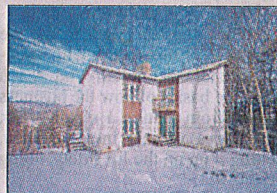


### Immaculate Home - Excellent Location

Private home on 6.5± acres located off a paved road within 5 minutes of Stowe Village. Daylight floods the main living space from the large solarium. The conveniences of a main floor bedroom, radiant heat, mudroom and an attached 2-car garage are yours to enjoy.

(802) 253-1806

\$400,000



### Mansfield View

Updated and efficient 4 bedroom home in a terrific neighborhood! Offering winter views of the Mansfield Range, this 1.3± acre lot is close to Stowe Village, shops and the rec path. Ideal as a vacation retreat or full time residence.

(802) 253-9771

\$399,000



### Elmore Post & Beam

This charming 3-BR, 3-BA Vermont post & beam sits on 22.8± acres with mountain views. Enjoy an open floor plan, tiled entry, vaulted ceiling, kitchen with soapstone counters and abundant natural light. An efficient home in a desirable, private location.

(802) 253-1806

\$360,000



### Exceptional Private Building Lot

Exceptional, private 9.3± acre lot with mountain views, overlooking a beautiful open field area. Roughed-in driveway and septic design for a 6 bedroom home. Close to I-89, Waterbury Reservoir and other recreation opportunities - hiking, skiing, VAST trails.

(802) 253-9771

\$190,000

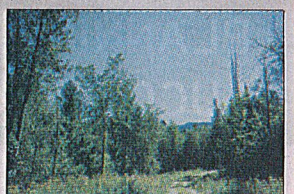


### Skiing the Dream at Smugglers

Welcome to Smugglers' Notch Resort Villamarksauna #13, a 2-BR, 2-BA end unit overlooking the river...open floor plan, fireplace, 2 decks and lots of natural light. Many amenities including the new FunZone 2.0. Trails just steps away! RCI member.

(802) 253-1806

\$185,000



### Excellent Value!

Two of Morrisstown's best valued building lots. Each is permitted for a 3-BR residence with municipal sewer hook-up at street. Lot G is 1.6± AC. Lot H is 1.9± AC. Convenient, private location just on the outskirts of the village in a quiet newer subdivision.

(802) 253-9771

\$49,900 Each

LUXURY  
PORTFOLIO  
INTERNATIONAL



LEADING REAL ESTATE  
COMPANIES OF THE WORLD



goo.gl/VIG726





# PALL SPERA COMPANY

REALTORS, LLC

WWW.PALLSPERA.COM

65-5 NORTHGATE PLAZA - P.O. BOX 507

MORRISVILLE, VERMONT 05661

MAIN 802.888.1102 | TOLL FREE 877.888.4679

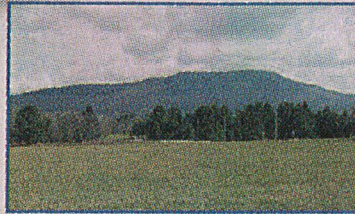


### Spectacular Northeast Kingdom Estate

Extraordinary private enclave in the hills of the Northeast Kingdom... the exceptional 8,200± sq. ft. home is set atop a knoll with 360-degree mountain views and surrounded by 287± acres of open meadows and woodlands. Easily accessible from I-91.

(802) 253-9771

\$4,100,000

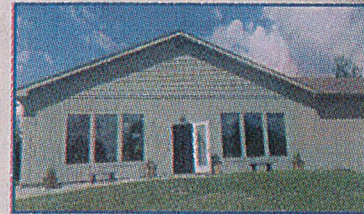


### Land Abutting Copley Hospital

Lots ranging from 3.7± - 13.8± acres with beautiful views, abutting Copley Hospital/Copley Campus and Copley Country Club. Located in Morrisville's 'Special Use District' - ideal for a professional office and other healthcare or non-healthcare uses.

(802) 253-1806

Starting at \$485,000



### Exciting Commercial Opportunity

Campground property of 30± acres with 20 sites, in-ground swimming pool, go-kart track, drainage, heating system, on-demand water heater, remodeled bathrooms and landscaped grounds. Offering also includes 4-BR home. Owner is a licensed Realtor.

(802) 888-1102

\$419,000



### Lakeside Home, Elmore

This quiet, year-round, 3 bedroom, 2 bath lakeside home has upgraded finishes, abundant natural light, plus plenty of space and privacy. The large deck and private dock provide opportunities for recreation and relaxation. Steady rental history.

(802) 253-1806

\$375,000



### Homesteading Farm

Wonderful 1880 farmhouse on 5± acres including an in-law apartment, barn, greenhouse, decks with southern exposure and mountain views and a guest house for visitors or rental. Ample opportunity for homesteading, farming livestock, and gardens.

(802) 888-1102

\$229,000



### 2-BR Condo in Smugglers' Notch Resort

Spacious 2 bedroom condo in the heart of Village East Community at Smugglers' Notch Resort. 56 Riverside is centrally located to the pools, restaurants, stores, Funzone 2.0 and the ski slopes. Fully furnished and enrolled in the Smuggs rental program.

(802) 253-1806

\$200,000



### Excellent Value!

Two of Morristown's best valued building lots. Each is permitted for a 3-BR residence with municipal sewer hook-up at street. Lot G is 1.6± AC, Lot H is 1.9± AC. Convenient, private location just on the outskirts of the village in a quiet newer subdivision.

(802) 253-9771

\$49,900 Each



### Building Lot in Eden

This lovely 2.6± acre building lot is located in an established rural subdivision with power and septic design. Spruce Lane is a private dirt road not far from a paved road. A nice place to call home!

(802) 888-1102

\$35,000



### Peaceful Lowell Setting

Pleasant 6.1± acre parcel located on a quiet back road with the east branch of the Missisquoi River as a natural border. Beautiful view of Mt. Norris! Power is on site. Ideal for camping, swimming or grazing horses and only approx. 17 miles from Jay Peak.

(802) 888-1102

\$26,500



NANCY DURAND · PENNY MASON-ANDERSON · NANCY PRITCHARD  
LAUREL HOULE · CASEY GRONDIN · ANGELA LAMBERT · MONICA HEATH · BOB DURAND



<https://goo.gl/XmJ1tb>