



PALL SPERA COMPANY

REALTORS, LLC

WWW.PALLSPERA.COM

65-5 NORTHGATE PLAZA - P.O. BOX 507

MORRISVILLE, VERMONT 05661

MAIN 802.888.1102 | TOLL FREE 877.888.4679



The Essence of Vermont Country Living

This 27± acre VT homestead is fully self-sufficient and off-the-grid. The 2,496± sq. ft. log cabin has 4 BR and 3 BA. Thousands of maples turn the mountainside red in the fall and flow with sap in the spring. Enjoy trails, brooks, waterfalls and views!
(802) 253-1806 \$699,000



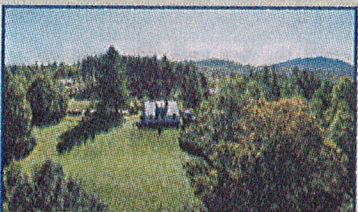
Live the Vermont Dream

Classic post and beam on 51.7± AC in quaint Belvidere. Energy efficient home is ideally located between Jay Peak and Smugglers' Notch ski areas with lovely mountain views. Includes a timber frame barn with heated workshop and 2-stall horse barn.
(802) 253-1806 \$360,000



Stately Beauty Awaits!

Enjoy mountain views off the back deck of this stately home. Open floor plan from the beautiful kitchen into the dining room, master bedroom with large master bath with whirlpool tub, plus 2 more bedrooms. Convenient Hyde Park location.
(802) 888-1102 \$300,000



Your Vermont Getaway

This light-filled contemporary farmhouse is turn-key, offered fully furnished. The 2,372± sq. ft., 3-BR home has been finished with a commitment to VT charm, set upon 10± private acres with panoramic views. Near summer and winter recreation.
(802) 253-1806 \$295,000



Cozy Log Home in Greensboro

Cozy log home on 9.8± acres with a pond, just a 2 minute drive to Lake Caspian! This home offers glowing wood floors and a master bed and bath on the main level. Enjoy this country setting from the deck or the covered porch. A rare find!
(802) 888-1102 \$225,000



Commercial Property

Truly a great little property with easy access to everything that Morristown has to offer, and good exposure. Bright sunny rooms, and 2 rooms upstairs that could be offices. This commercial property could be just what you're looking for!
(802) 888-1102 \$135,000



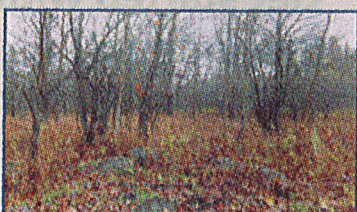
Enjoy Vermont at its Best

3.2± Acres in a sought after neighborhood. Power at road, surveyed and ready to go! Start building now and be in before summer ends! Very close to the Elmore/Stowe line and minutes to Rte. 100. Enjoy nature from this private, quiet setting.
(802) 888-1102 \$50,000



One Level Living

This 2 bedroom home is located close to area amenities and a short distance from I-89. Enjoy abundant natural light and a truly cozy feel. The kitchen/dining room is open to the living room area with cathedral ceilings, making it feel more spacious.
(802) 888-1102 \$40,000



Sweet 2-Acre Lot

2± Acre lot on Elmore Pond Road, just 2 miles to Elmore village, 30 minutes to Montpelier, Morrisville and Stowe just 5-15 minutes away! Power is at the road and septic plans are available. This one won't last long!
(802) 888-1102 \$40,000



NANCY DURAND • PENNY MASON-ANDERSON • NANCY PRITCHARD
LAUREL HOULE • CASEY GRONDIN • ANGELA LAMBERT • MONICA HEATH • BOB DURAND



goo.gl/ciG8mK



PALL SPERA COMPANY

REALTORS, LLC

WWW.PALLSPERA.COM

1800 MOUNTAIN ROAD, STOWE ~ 802.253.9771

62 MAIN STREET, STOWE ~ 802.253.1806

65-5 NORTHGATE PLAZA, MORRISVILLE ~ 802.888.1102

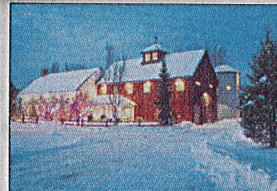


Multi-Business Complex, Jeffersonville

Superb opportunity to acquire a thriving retail business complex in the heart of Jeffersonville, VT. Center of complex is long-standing, and well regarded grocery store, Liquor store and gift shop in adjacent building. Includes 8 apartments.

(802) 253-9771

\$2,775,000

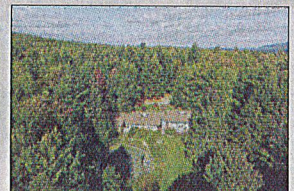


Luxurious Stowe Residence

A contemporary Vermont home located in a highly desirable enclave south of Stowe. The approximately 4,000± square foot home is fully furnished and equipped with 5 bedrooms and 6 baths. Meticulous attention to detail and high end finishes both inside and out.

(802) 253-1806

\$1,495,000



Family Retreat In Stowe

This is a BIG house with 7 bedrooms and 5.5 baths in a great neighborhood! House is well built and has many recent upgrades. Located on a town road, close to town, trails, and skiing. Good views available with clearing. No HOA fees!

(802) 253-9771

\$925,000

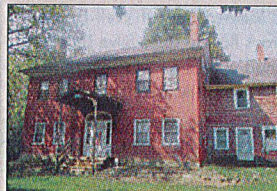


Sugar House Hill Location

Well maintained 4,268± sq. ft. contemporary cape located in a wonderful private neighborhood. Includes 5 bedrooms, an updated Chef's kitchen, great room, fireside reading area, lush perennial gardens and sun-drenched 20x40 swimming pool.

(802) 253-9771

\$698,000



Stowe Apartment Building

8-Unit (1 bedroom and 2 bedroom) apartment building in an outstanding location for proximity to Stowe Village, ski area and Morrisville. Large private rear lawn faces Mt. Mansfield across the Little River. Units in high demand with a very stable tenant list.

(802) 253-9771

\$650,000

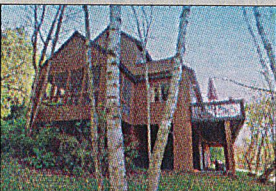


Pinnacle Road, Stowe

This wonderful 3 bedroom, 3 bath Stowe Hollow property offers 2,500± sq. ft. of living space, a beautiful pond and mountain views on 4± acres. Located in a highly desirable neighborhood with hiking trails, just minutes to Stowe Village.

(802) 253-9771

\$775,000



Stonybrook at Stowe

A primary or second home getaway at Stonybrook with 160± common acres, ponds, pools and tennis courts. This 3 bedroom, 4 bath unit features cathedral ceilings, fireplace, den, balcony, deck, screened porch and an unfinished walkout basement.

(802) 253-9771

\$495,000



Home with Acreage

This property offers a sugarhouse, winding brook, 184.5± acres, 2 outbuildings, a 2 bedroom, 2 bath home with full basement, and an attached 2-car garage. Road frontage on 3 roads and endless outdoor recreational opportunities.

(802) 888-1102

\$460,000



Stowe Village Condo

This pristine, full-of-light corner unit with a welcoming front porch is a must see! Townhouse boasts 2 bedrooms, 3 baths, custom work throughout, gas fireplace, and a finished lower level. Close to all Stowe Village restaurants, shops, and school.

(802) 888-1102

\$410,000

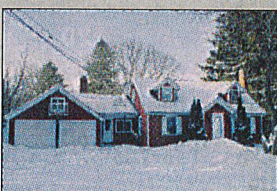


Robinson Springs, Stowe

Large, private, 15± acre building lot in the exclusive Robinson Springs neighborhood. Enjoy Worcester Mountain views along with direct access to Town of Stowe lands for hiking, biking, skiing and other recreational pursuits.

(802) 253-1806

\$375,000

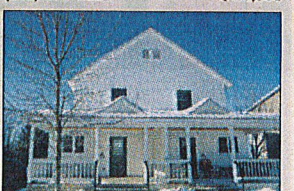


Charming Cape

3 Bedroom, 2 bath home on 1+ acre. Lots of living space...large eat-in kitchen, wood stoves in both formal dining area and family room, plus a newly renovated sunroom. A 3-season porch, large deck and attached 2-car garage complete the property.

(802) 888-1102

\$275,000



Modern Sylvan Woods Condo

This lovely 2-BR, 1,000± sq. ft. condo offers convenient mountain town living. The lovely kitchen opens toward the rest of the living space and the basement could be finished to your taste. Just minutes from shops, restaurants, Mt. Mansfield and 189.

(802) 253-1806

\$145,000

LUXURY
PORTFOLIO
INTERNATIONAL



LEADING REAL ESTATE
COMPANIES OF THE WORLD



goo.gl/gXUJIZ