



PALL SPERA COMPANY REALTORS, LLC

WWW.PALLSPERA.COM

65-5 NORTHGATE PLAZA - P.O. BOX 507

MORRISVILLE, VERMONT 05661

MAIN 802.888.1102 | TOLL FREE 877.888.4679



Valley View Farm

Magnificent 135.5± acre conserved farm with large barn and 3 apartment farmhouse complex - sugar house, meadows and woods, Current Use and Vermont Land Trust conservation. Located 2 miles from Stowe. Truly special!

(802) 253-9771

\$850,000



Stunning Post & Beam

Stunning home on 72+ acres with swimming ponds, dock and storage shed. Open floor plan...tiled foyer with dog shower, gourmet kitchen, island, formal dining, master suite with walk-in closet and Jacuzzi tub. Potential for in-law suite.

(802) 888-1102

\$650,000



Immaculate Home - Excellent Location

Private home on 6.5± acres located off a paved road within 5 minutes of Stowe Village. Daylight floods the main living space from the large solarium. Convenient main floor bedroom, radiant heat, mudroom and an attached 2-car garage.

(802) 253-1806

\$400,000



Ready for Your Dream Home!

Breathtaking 140+ acre parcel in Greensboro... end-of-road privacy, open fields, woods, stream, spring-fed pond, walking trails, drilled well, septic system in place, power & internet at the lot, plus an architecturally-designed structure for equipment/tools.

(802) 888-1102

\$395,000



Oak Ridge Estates, Morristown

Enjoy views of the Worcester Range, Camel's Hump, and the Green Mountains from this 3 bedroom, 2.5 bath cape-style home...wood and tile floors, main floor laundry, wood burning fireplace, and the perfect covered country porch!

(802) 253-9771

\$369,000



Private Cedar Log Home

Reconnect with nature in this private cedar log home with pond and waterfall on 25± acres. Home offers abundant natural light, main floor master with large walk-in closet, cozy loft, finished basement, and 2-bay garage with large workshop & storage.

(802) 888-1102

\$300,000



Hill Top Country Home

This home offers lots of light, 3 levels of living space, 3 bedrooms, 3 baths, and office with closet. 10± Acres with wonderful Mt. Mansfield views. A screened-in porch, stone patio, and a balcony offer additional opportunities for outdoor enjoyment.

(802) 888-1102

\$265,000



Private Location in Hardwick

Lovely 3 bedroom cape-style home with large enclosed porch, renovated kitchen, sunny living and dining rooms, and tile and hardwood floors throughout. Upgrades include new windows, Hardie plank siding, oil tank, electric, foundation and more.

(802) 888-1102

\$128,500



Small Farm Road

Access this 5.2± acre parcel via a private road off of paved Randolph Road. This secluded house site is permitted for a 5 bedroom single family residence and has the potential for spectacular views with clearing, stream, and a possible pond site.

(802) 253-9771

\$79,000

RENTAL INVENTORY NEEDED...

We are receiving a growing number of requests for both long term and vacation rentals. If you have a house, cottage, or apartment that you would like to include in our rental program, please contact Leslie Rollins at (802) 760-3142 or Leslie.Rollins@PallSpera.com



NANCY DURAND · PENNY MASON-ANDERSON · NANCY PRITCHARD
LAUREL HOULE · CASEY GRONDIN · ANGELA LAMBERT · MONICA HEATH · BOB DURAND



g00 glSYDNYF

FROM THE VALLEY TO THE MOUNTAINS
... REAL ESTATE SALES AND RENTALS.



PALL SPERA COMPANY REALTORS, LLC

WWW.PALLSPERA.COM

1800 MOUNTAIN ROAD, STOWE - 802.253.9771

62 MAIN STREET, STOWE - 802.253.1806

65-5 NORTHGATE PLAZA, MORRISVILLE - 802.888.1102



Spectacular Northeast Kingdom Estate

Extraordinary private enclave in the hills of the Northeast Kingdom...the exceptional 8,200± sq. ft. home is set atop a knoll with 360-degree mountain views and surrounded by 287± acres of open meadows and woodlands. Easily accessible from I-91.

(802) 253-9771

\$3,900,000



Magical Setting in Robinson Springs

Exceptional 23.5± acre Stowe estate with 5 bedrooms and 6 baths. Magnificent mountain views and extensive perennial gardens enhance the magical setting of this private oasis, complete with swimming pool. The 23.5± acres is comprised of two parcels.

(802) 253-9771

\$1,792,500

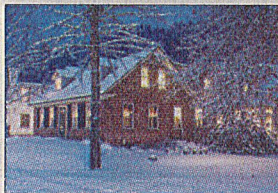


Quintessential Country Estate

Quintessential country estate on 75± acres with a vintage 1830s post and beam farmhouse. The 5-BR home exudes country charm with original floors and exposed beams. Meadows, a large pond and mountain views complement this inviting country property.

(802) 253-1806

\$1,300,000



In the Heart of Stowe Village

This classic village home offers modern amenities while maintaining its original beauty and charm... spacious rooms, original wood floors, exposed beams, floor-to-ceiling stone fireplace and kitchen with gourmet appliances. Steps from village amenities.

(802) 253-1806

\$925,000

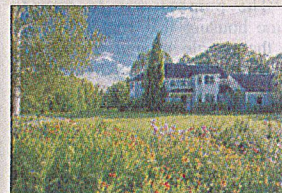


Completely Restored Antique Farmhouse

Beautiful 3-BR antique VT farmhouse on 58± AC - 55± AC enrolled in VT's Land Use Program. Panoramic mountain and valley views! Radiant heat, exposed hand-hewn beams, refinished old growth planks and wide pine floors, Chef's kitchen, barn, garage and more.

(802) 253-1806

\$699,000



A Magical Setting

Incredible value ~ A picturesque setting with ultimate privacy on 10± acres... well maintained 4 bedroom, 4 bath home with abundant natural light, maple floors, granite counter tops, birch cabinets, wood-burning fireplace and more. Ideal for horses.

(802) 253-9771

\$670,000



Privacy & Convenience in Stowe

This 3-BR, 3-BA home offers privacy and convenience in a special Stowe location. Open floor plan, gorgeous wood floors, gas fireplace, kitchen with built-ins, main floor master suite and much more. Set on 5± AC with recreation trails within walking distance.

(802) 253-1806

\$559,000

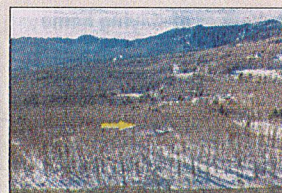


Choice Stonybrook Condominium

Enjoy the private, serene site with lush gardens and Mt. Mansfield views. This 4-BR home has many attractive features and improvements... upscale kitchen, first floor master suite with designer bathroom, custom built-ins, twin hot water heaters, new furnace.

(802) 253-9771

\$555,000



Build in Robinson Springs

10± Acres of pure serenity with potential views from the Worcester Range to Mt. Mansfield. Potential for a 5-BR home in this private enclave with common pond, tennis courts and trail network. Just minutes from Stowe Village and the ski resort. Priced to sell.

(802) 253-1806

\$375,000



Oak Ridge Estates, Morristown

Enjoy views of the Worcester Range, Camel's Hump, and the Green Mountains from this 3 bedroom, 2.5 bath cape-style home...wood and tile floors, main floor laundry, wood burning fireplace, and the perfect covered country porch! Easy access to Morristown and Stowe.

(802) 253-9771

\$369,000

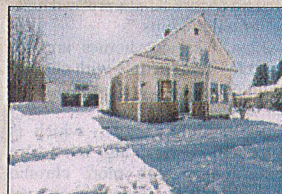


Neat as a Pin!

This immaculate home offers one level living with an open floor plan, hardwood floors, 3 spacious bedrooms, and 2.5 baths. The 2.2± AC includes established fruit trees, berry bushes, and even an asparagus bed. Just minutes to amenities and recreation.

(802) 253-1806

\$279,500



Make This Home Your Own

Enjoy the best of village living from this classic New England home with 4 bedrooms, 2 baths, private lawn and attached 2-car garage. This property has great potential for you to finish as you desire. Across from schools, fields and playgrounds!

(802) 253-1806

\$179,999

RENTAL INVENTORY NEEDED...

We are receiving a growing number of requests for both long-term and vacation rentals. If you have a house, cottage or apartment that you would like to include in our rental program, please contact Leslie Rollins at (802) 760-3142 or Leslie.Rollins@PallSpera.com.

LUXURY
PORTFOLIO
INTERNATIONAL



LEADING REAL ESTATE
COMPANIES OF THE WORLD



goo.gl/kbRRKv

4/12/18