



Quintessential New England Farmhouse
On 15± AC, this 4-BR, 2,794± sq. ft. home offers an authentic slice of Vermont! New standing seam roof, upgraded boiler and water heater, replaced septic system and windows, in-ground swimming pool, barn, building for maple sugaring, 2-car garage.
(802) 253-1806 **\$460,000**



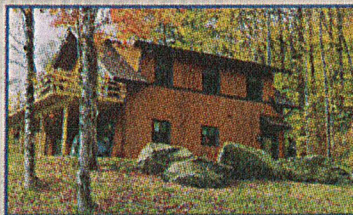
Home with Acreage
This property offers a sugarhouse, winding brook, 184.5± acres, 2 outbuildings, a 2 bedroom, 2 bath home with full basement, and an attached 2-car garage. Road frontage on 3 roads and endless outdoor recreational opportunities.
(802) 888-1102 **\$460,000**



Rare Find on Lake Caspian
Relax at this cottage on Lake Caspian, with sweeping porches and 50 feet of lake frontage with a beach area and private dock. Enjoy peaceful lake views from the master bedroom balcony! Bunk house as well. Walk to nearby ice cream shop or country store.
(802) 888-1102 **\$450,000**



Picturesque New England Homestead
Enjoy 110± acres of stunning pastures, meadows, forest, mountain views & 3 ponds in Groton. A 3-story classic red barn complements the 4-BR farmhouse... charming site for a hobby farm, B&B, wedding venue, or a private escape. Access to the VAST trails.
(802) 253-1806 **\$399,000**



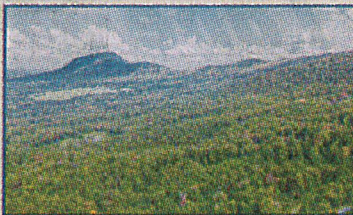
Lake Views!
Beautiful 3 bedroom, 2 bath contemporary home, less than 2 years old, with a spacious and welcoming floor plan and vaulted ceilings. The master bedroom has a large deck with grand views of the lake. Also offers radiant heat, 2-car garage, and many extras.
(802) 888-1102 **\$340,000**



Stylish Contemporary Home
3-BR, 3-BA home offers gourmet kitchen with quartz countertop & island, sunroom, and office space. The huge living area has cathedral ceilings, skylights, catwalk, & wood floors. Set on 10.3± acres w/attached 3-car garage, 13x23 outbuilding & mountain views!
(802) 888-1102 **\$289,500**



Lots of Potential!
This 4 bedroom home offers both character and potential! Set on a quiet village street featuring an oversized barn/garage with ample storage space, a cute front porch and a private backyard with garden space.
(802) 888-1102 **\$179,000**



A Beautiful Piece of Vermont
Ideally located between Stowe and Morrisville, this 4.6± acre lot captures inspiring views from Mt. Mansfield to Sterling Mountain and beyond. Cleared home site and driveway, permitted for a 4-BR home. Priced to sell - BELOW town assessment!
(802) 253-1806 **\$119,000**



Exceptional Value!
Cadys Falls is a secluded 37± acre peninsula on Lake Lamoille thoughtfully divided into 9 parcels, with Morrisville conveniences only a few minutes away. Lots offer 2.18-9.49± acres with privacy and beautiful scenery. A serene location for your dream home!
(802) 253-1806 **Starting at \$69,000**

RENTAL INVENTORY NEEDED...

We are receiving a growing number of requests for both long term and vacation rentals. If you have a house, cottage, or apartment that you would like to include in our rental program, please contact Leslie Rollins at (802) 760-3142 or Leslie.Rollins@PallSpera.com.



NANCY DURAND • PENNY MASON-ANDERSON • NANCY PRITCHARD
LAUREL HOULE • CASEY GRONDIN • ANGELA LAMBERT • MONICA HEATH • BOB DURAND



gao-gle11Nku1

**FROM THE VALLEY TO THE MOUNTAINS
... REAL ESTATE SALES AND RENTALS.**



PALL SPERA COMPANY

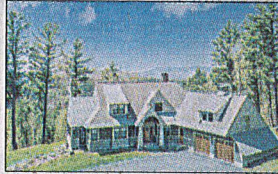
REALTORS, LLC

WWW.PALLSPERA.COM

1800 MOUNTAIN ROAD, STOWE - 802.253.9771

62 MAIN STREET, STOWE - 802.253.1806

65-5 NORTHGATE PLAZA, MORRISVILLE - 802.888.1102

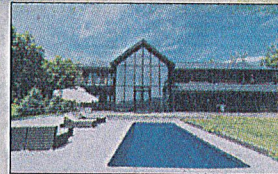


Extraordinary Stowe Estate

Stunning country estate with expansive mountain views just 2 minutes from Stowe amenities. Excellent craftsmanship & finishes, open concept floor plan, chef's kitchen, main floor master suite, lower level media room w/ sauna plus lush grounds & gardens.

(802) 253-1806

\$2,400,000



Magnificent Modern Industrial Home

One-of-a-kind Vermont estate on 29± acres overlooking the Waterbury Reservoir & open mountain views. Contemporary lines of steel beams blend with the warmth of wood creating a truly unique home. Heated salt water pool, pond, private woods & trails.

(802) 253-1806

\$1,450,000

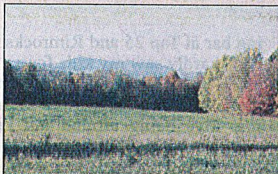


Horizons, Stowe

The name says it all! The views are panoramic and spectacular. The house has 6 bedrooms, perfect for family and friends! The 27± acre grounds include sloping lawn, fields, woods, pond and tennis court. Great convenient location.

(802) 253-9771

\$999,000



Amazing Acreage In Elmore

FIELDS, FOREST and VIEWS! 302± Acre parcel with complete serenity and beauty. Walk the wooded trails, fish in the stream, enjoy beautiful sunsets. Quaint Elmore Village is close by. Selectively logged with mountain views. Ideal horse country!

(802) 888-1102

\$650,000



Stunning Post & Beam, Woodbury

Stunning home on 72± acres with swimming ponds, dock and storage shed. Open floor plan... tiled foyer with dog shower, gourmet kitchen, island, formal dining, master suite with walk-in closet and Jacuzzi tub. Potential for in-law suite.

(802) 888-1102

\$650,000

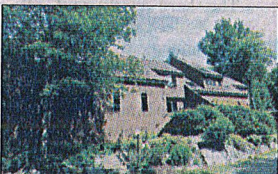


Pinnacle Road, Stowe

This wonderful 3 bedroom, 3 bath Stowe Hollow property offers 2,500+ sq. ft. of living space on 4± acres with a beautiful pond and mountain views. Located in a highly desirable neighborhood with hiking trails, and just minutes to Stowe Village.

(802) 253-9771

\$575,000



Spacious Stonybrook Condominium

One of the largest condominiums in the desirable enclave of Stonybrook. This unit is slightly over 4,000 square feet with 5 bedrooms, 5 bathrooms and is offered furnished. Convenient location, surrounded by 160 acres of woods, ponds and trails.

(802) 253-9771

\$499,000



Quintessential New England Farmhouse

On 15± acres, this 4-BR, 2,794± sq. ft. home offers an authentic slice of Vermont! New standing seam roof, upgraded boiler and water heater, replaced septic system and windows. In-ground swimming pool, barn, building for maple sugaring, 2-car garage.

(802) 253-1806

\$460,000



Mansfield View

Updated and efficient 4 bedroom, 4 bath home in a terrific neighborhood! Offering winter views of the Mansfield Range, this 1.3± acre lot is close to Stowe Village, shops and the Rec Path. Ideal as a vacation retreat or full time residence.

(802) 253-9771

\$399,000



Lovely, Bright Home In Elmore

This lovely, bright 2,800± sq. ft. home looks out to Lake Elmore and Elmore Mountain in the distance. 3 Bedrooms, 2 baths, open main floor plus a large deck - Ideal for entertaining. Easy access to Morrisville, Stowe, Montpelier and St. Johnsbury.

(802) 253-1806

\$299,000



Barnes Hill, Stowe

Interesting 8.3± acre lot located in the Moscow section of Stowe. 5-BR conventional septic permit. House site will enjoy the Worcester Range view overlooking a large pond on an adjacent parcel. Easy access to Stowe Village, Stowe Mountain Resort and I-89.

(802) 253-9771

\$299,000



Beautiful Waterbury Ctr. Land Parcels

Two exceptionally beautiful 2± acre parcels with southerly and westerly exposure, overlooking open fields - never to be developed - and mountain views. Easily accessible with access to Thatcher Brook. Each lot is permitted for a 5-BR home. Owner/agent.

(802) 253-9771

Starting at \$149,000

RENTAL INVENTORY NEEDED...

We are receiving a growing number of requests for both long-term and vacation rentals. If you have a house, cottage or apartment that you would like to include in our rental program, please contact Leslie Rollins at (802) 760-3142 or Leslie.Rollins@PallSpera.com.

LUXURY
PORTFOLIO
INTERNATIONAL



LEADING REAL ESTATE
COMPANIES OF THE WORLD



goo.gl/9SHNW