



# PALL SPERA COMPANY REALTORS, LLC

WWW.PALLSPERA.COM

1800 MOUNTAIN ROAD, STOWE - 802.253.9771

62 MAIN STREET, STOWE - 802.253.1806

65-5 NORTHGATE PLAZA, MORRISVILLE - 802.888.1102



## The Essence of Vermont Country Living

This 522.9± acre VT homestead is fully self-sufficient and off-the-grid. The 2,496± sq. ft. log cabin has 4 BR and 3 BA. 6,000 Maples are currently tapped, with potential for thousands more. Trails, brooks, waterfalls and mountain views are yours to enjoy!

(802) 253-1806 \$2,200,000



## Unique Country Property

A quintessential Vermont property in an extremely private yet convenient location. Offering includes the newly constructed main house with stunning views and a guest house, reconstructed from a 1900's sugar house. Both are fully furnished and equipped.

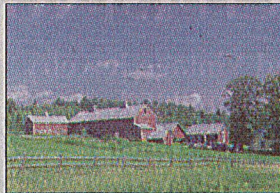
(802) 253-1806 \$1,320,000



## Mountain Road, Stowe

Beautifully restored and meticulously maintained antique VT farmhouse, convenient to both the village and Stowe Mountain Resort. Currently a 5000+ sq. ft. residence and office space. In 'Mountain Road Crossroads' zoning with desirable setbacks and uses.

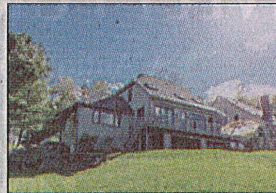
(802) 253-1806 \$1,100,000



## Valley View Farm

Magnificent 135.5± acre conserved farm with large barn and 3 apartment farmhouse complex - sugar house, meadows and woods. Current Use and Vermont Land Trust conservation. Conveniently located on Stagecoach Road just 2 miles to Stowe. Truly a special property!

(802) 253-9771 \$850,000



## Stowe Condo in a Picturesque Setting

Stunning Stowe condominium in a private, picturesque setting with 3,619± sq. ft. of living space. This 4 bedroom, 5 bath end unit has a deck with lovely mountain views, two sunken living spaces, a master bedroom on the main floor, and a 2.5-car garage.

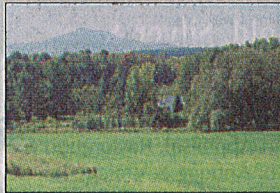
(802) 253-1806 \$795,000



## Immaculate Home - Excellent Location

Private home on 6.5± AC located off a paved road within 5 minutes of Stowe Village. Daylight floods the main living space from the large solarium. The conveniences of a main floor bedroom, radiant heat, mudroom and an attached 2-car garage are yours to enjoy.

(802) 253-1806 \$400,000



## Beautiful Land Parcel with Barn

Exceptionally beautiful 16-acre parcel with large barn, westerly & southerly exposure, overlooking open fields - never to be developed & mountain views. Easily accessible, adjacent to Thatcher Brook. Plenty of septic available. Owner/agent.

(802) 253-9771 \$398,000



## Hyde Park Village

Restored antique colonial with 3-BR, 3-BA, renovated kitchen & baths, period moldings & trim, and original floors. Enjoy the quiet setting from the wrap around covered porch overlooking gardens, seasonal mountain views, and sunsets. 30X40 Barn/garage.

(802) 253-1806 \$330,000



## Stagecoach Road, Morristown

Well kept 3 bedroom home on 10.6± acres with views of the Worcester Range and Mt. Mansfield. Drink your morning coffee on one of 3 decks! 3-Bay garage has large 2nd floor for storage or perhaps an apartment. Within just a few miles of Stowe Village.

(802) 888-1102 \$325,000



## Exceptional Private Building Lot

Exceptional 9.3± acre lot with mountain views, overlooking a beautiful open field area. Roughed-in driveway and septic design for a 6 bedroom home. Close to I-89, Watbury Reservoir and other recreation opportunities - hiking, skiing, VAST trails.

(802) 253-9771 \$190,000



## Commercial Building for Sale

This 1,269± sq. ft. commercial building is situated on a 0.3± acre lot with road frontage on Route 108 South. Building offers with an open floor plan allowing for endless opportunities. Large entry room, maple and pine flooring throughout.

(802) 253-1806 \$185,000



## Sweet Country Lot

3.2± Acres in a sought after neighborhood. Power at road, surveyed and ready to go! Start building now and be in before summer ends! Very close to the Elmore/Stowe line and minutes to Rte. 100. Enjoy nature from this private, quiet setting.

(802) 888-1102 \$50,000

LUXURY  
PORTFOLIO  
INTERNATIONAL



LEADING REAL ESTATE  
COMPANIES OF THE WORLD



goo.gl/Vr63X





## PALL SPERA COMPANY

REALTORS, LLC

WWW.PALLSPERA.COM

65-5 NORTHGATE PLAZA - P.O. BOX 507

MORRISVILLE, VERMONT 05661

MAIN 802.888.1102 | TOLL FREE 877.888.4679



### The Essence of Vermont Country Living

This 27± acre VT homestead is fully self-sufficient and off-the-grid. The 4-BR, 3-BA log cabin has 2,496± sq. ft. Thousands of maples turn the mountainside red in fall and flow with sap in spring. Enjoy trails, brooks, waterfalls & mountain views! Add'l land available.

(802) 253-1806

\$699,000



### Custom Contemporary Home

Custom designed 6 bedroom, 4 bath home with clean lines and one-of-a-kind floor plan! The natural light welcomes all who enter; the open floor plan boasts a state-of-the-art kitchen, walls of windows, gas fireplace, radiant heat, and 10 ft. ceilings.

(802) 888-1102

\$595,000



### Beautiful Country Setting

This 3-BR, 2-BA home has a large kitchen with many cabinets, deck, main floor master bedroom, and 2 spacious bedrooms on the 2nd floor. Manicured grounds and 2 large ponds await you on the 18± acre parcel. Close to Morristown and Stowe conveniences.

(802) 888-1102

\$399,000



SALE PENDING

### Hyde Park Village

Restored antique colonial with 3-BR, 3-BA, renovated kitchen & baths, period moldings & trim, and original floors. Enjoy the quiet setting from the wrap around covered porch overlooking the gardens, seasonal mountain views, and sunsets. 30X40 Barn/garage.

(802) 253-1806

\$330,000



### Multi-Family Victorian

A truly beautiful Victorian home/apartment building, located just minutes from Lake Caspian. All 4 units have been well cared for, remodeled yet retaining the charm of yesteryear with many built-ins remaining. Lovely landscaping.

(802) 888-1102

\$328,000

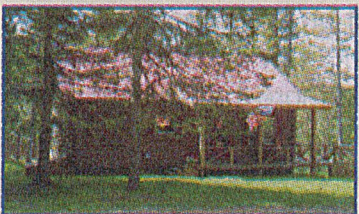


### Stagecoach Road, Morristown

Well kept 3 bedroom home on 10.6± acres with views of the Worcester Range and Mt. Mansfield. Drink your morning coffee on one of 3 decks! 3-Bay garage has large 2nd floor for storage or perhaps an apartment. Within just a few miles of Stowe Village.

(802) 888-1102

\$325,000



### A Rare Find in Greensboro

Cozy log home on 9.8± acres with a pond, just a 2 minute drive to Lake Caspian. This home offers glowing wood floors and a master bedroom and bath on the main level. Enjoy this peaceful country setting from the deck or covered porch.

(802) 888-1102

\$225,000



### 100+ Acres of Opportunity!

101± Acres in Morristown - perfect for hiking, biking, hunting, snow-shoeing and more with its hills, valleys and streams. Current enrollment in VT's Current Use program offers significant tax advantages. Buyer will be responsible for obtaining permits.

(802) 253-1806

\$195,000



### Excellent Value!

Two of Morristown's best valued building lots. Each is permitted for a 3-BR residence with municipal sewer hook-up at street. Lot G is 1.6± AC, Lot H is 1.9± AC. Convenient, private location just on the outskirts of the village in a quiet newer subdivision.

(802) 253-9771

\$49,900 Each

