



# PALL SPERA COMPANY

REALTORS, LLC

WWW.PALLSPERA.COM

1800 MOUNTAIN ROAD, STOWE - 802.253.9771

62 MAIN STREET, STOWE - 802.253.1806

65-5 NORTHGATE PLAZA, MORRISVILLE - 802.888.1102



### Renovated Stowe Home

Completely renovated 3-BR, 4-BA home. Quality finishes...professional gas range with copper hood, granite counter tops and custom cabinetry in the kitchen, marble in the baths with slate and glass tile showers. Set on 3± AC with direct Mt. Mansfield views.

(802) 253-1806

\$799,000

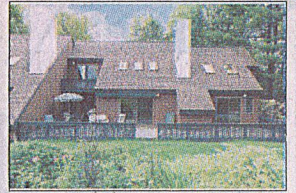


### Desirable Stowe Hollow Setting

Stowe home on 11.8± acres in a private Stowe Hollow setting with mountain views and a swimming pond. Main floor master suite and laundry, wood burning Rumford fireplace, sunroom, unfinished walkout basement, attached 2-car garage, and 2-stall barn.

(802) 253-9771

\$749,000



### Beautiful Stonybrook Condominium

Sensational 4-BR Stonybrook unit with garage - beautifully renovated and fully furnished with wide board pine floors, 2 fieldstone fireplaces, granite counters, luxurious master bath and Mt. Mansfield views! Stonybrook offers 2 pools, tennis courts, sauna.

(802) 253-1806

\$539,000

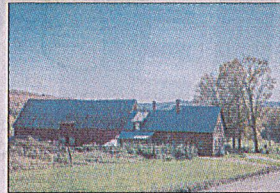


### Privacy Awaits...

This owner/contractor-built home features top-of-the-line materials, glowing oak floors, gas fireplace, open floor plan, exposed beams, and main level master. An attached 2-car garage and heated shop complete the picture. Permitted for 5 bedrooms.

(802) 888-1102

\$435,000

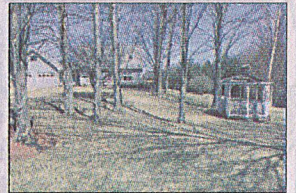


### Picturesque New England, Groton

Enjoy 110± acres of stunning pastures, meadows, forest, mountain views and 3 ponds. A 3-story classic red barn complements the 4-BR farmhouse...a charming site for a hobby farm, B&B, wedding venue, or simply a private escape. Access to the VAST trails.

(802) 253-1806

\$399,000



### Beautiful Country Setting

This 3-BR, 2-BA home has a large kitchen with many cabinets, deck, main floor master bedroom, and 2 spacious bedrooms on the 2nd floor. Manicured grounds and 2 large ponds await you on the 18+ acre parcel. Close to Morrisville and Stowe conveniences.

(802) 888-1102

\$399,000



### Robinson Springs, Stowe

Large, private, 15± acre building lot in the exclusive Robinson Springs neighborhood. Worcester Mountain views with bright Southern exposure, along with direct access to Town of Stowe lands for hiking, biking, skiing and other recreational pursuits.

(802) 253-1806

\$315,000



### Mead Road, Hyde Park

3 Bedroom, 2 bath log cabin on 1.5± beautifully landscaped acres with perennial beds, magnolia, dogwood, English Walnut trees, and "High Bush" blueberry bushes. Certified Wildlife Habitat area. Open floor plan with 2 extra rooms. A must see!

(802) 888-1102

\$225,000



### 100+ Acres of Opportunity!

101± Acres in Morrisville - perfect for hiking, biking, hunting, snow-shoeing and more with its hills, valleys and streams. Current enrollment in VT's Current Use program offers significant tax advantages. Buyer will be responsible for obtaining permits.

(802) 253-1806

\$195,000

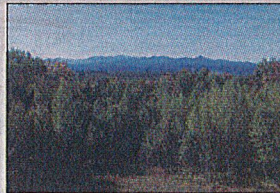


### Home with Character

Looking for a home with character and potential? This is the one! On a quiet street, this home has a country feel including a cute front porch with swing. Includes an oversized barn/garage with ample storage, and a private back yard with garden space.

(802) 888-1102

\$179,000

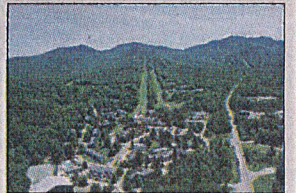


### Build Your Dream Mountain Home!

This 5± acre Elmore lot features spectacular mountain views which could be improved with additional clearing. Power is on site and driveway has been roughed-in. Elmore Lake, Stowe Mountain Resort, and Morrisville amenities are nearby.

(802) 253-9771

\$159,000



### 5-Star Rated Condominium

This well maintained, original owner studio is located in the heart of Smugglers' Notch Resort. Enjoy views from the private balcony, gas fireplace, Jacuzzi tub, new flooring, new counter tops, some new appliances & more. Close to dining, shops & the FunZone.

(802) 253-1806

\$100,000

LUXURY  
PORTFOLIO  
INTERNATIONAL



LEADING REAL ESTATE  
COMPANIES OF THE WORLD



glo.gl/sQyBvp





# PALL SPERA COMPANY

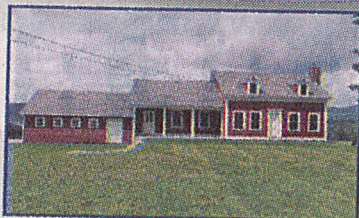
REALTORS, LLC

WWW.PALLSPERA.COM

65-5 NORTHGATE PLAZA - P.O. BOX 507

MORRISVILLE, VERMONT 05661

MAIN 802.888.1102 | TOLL FREE 877.888.4679



### Restored Antique Farmhouse

Completely restored 3-BR antique VT farmhouse on 58± AC, with 55± AC enrolled in VT's Land Use Program. Panoramic views! Radiant heat, exposed hand-hewn beams, refinished planks & wide pine floors, Chef's kitchen, barn, garage & more.

(802) 253-1806

\$699,000

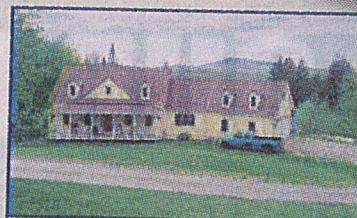


### Heaven On Earth

This 3-BR, 3-BA home is immaculate inside and out! A large open kitchen with upgraded appliances, a spacious first floor master suite with jacuzzi tub, and a sunny family room which opens to a private deck. Set on 5.4± AC only 10 minutes to Stowe.

(802) 888-1102

\$400,000



### Beautiful Colonial

Lovely 3 bedroom, 3 bath home on 10± acres with a covered porch and mountain views! Large living area with vaulted ceiling, gourmet kitchen with island, master bath with whirlpool tub, partially finished basement, and an attached 2-car garage.

(802) 888-1102

\$399,000

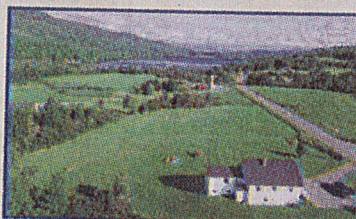


### Move-In Ready Home

Situated on 41.8± acres with 3 bedrooms including a main floor master and 2 upstairs bedrooms, new stainless steel appliances, breakfast bar, dining area and large living room. Sunny foyer and covered porch with mountain views!

(802) 888-1102

\$329,000



### Lovely, Bright Home in Elmore

This lovely, bright 2,800± sq. ft. home looks out to Lake Elmore and Elmore Mountain in the distance. 3 Bedrooms, 2 baths, open main floor plus a large deck - ideal for entertaining. Easy access to Morrisville, Stowe, Montpelier and St. Johnsbury.

(802) 253-1806

\$299,000



### Mead Road, Hyde Park

3 Bedroom, 2 bath log cabin on 1.5± beautifully landscaped acres with perennial beds, magnolia, dogwood, English Walnut trees, and "High Bush" blueberry bushes. Certified Wildlife Habitat area. Open floor plan with 2 extra rooms. A must see!

(802) 888-1102

\$225,000



### Desirable Location

3 Bedroom home in a desirable location a short distance to Smugglers' Notch Resort and an easy commute to Jericho and Burlington. The lovely 2.3± acre grounds have plenty of perennials, a vegetable garden, and a 20X24 outbuilding.

(802) 253-9771

\$205,000



### A True Piece of Vermont!

59± Surveyed acres with lovely views and stone wall boundary. Sloping land with sugar house and small sugar bush with 3500 possible taps and frontage on 2 roads. Approximately 10 acres of open field. Woods manicured for optimal sugaring.

(802) 888-1102

\$198,500



### Picturesque Lot near Smugglers' Notch

11.7± Acre lot in a picturesque setting with exceptional views of the ski ways and peak of Mt. Mansfield. Approximately 2 minutes to Smugglers' Notch, 40 minutes to Burlington, 10 minutes to Stowe (via Notch Rd), and 1 hour to Jay Peak.

(802) 253-1806

\$134,999



NANCY DURAND • PENNY MASON-ANDERSON • NANCY PRITCHARD  
LAUREL HOULE • CASEY GRONDIN • ANGELA LAMBERT • MONICA HEATH • BOB DURAND



goo.gl/RKDYAV