



PALL SPERA COMPANY

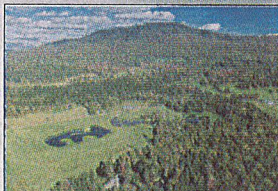
REALTORS, LLC

WWW.PALLSPERA.COM

1800 MOUNTAIN ROAD, STOWE - 802.253.9771

62 MAIN STREET, STOWE - 802.253.1806

65-5 NORTHGATE PLAZA, MORRISVILLE - 802.888.1102



Vermont Country Living

A distinguished Vermont estate, set upon 68± acres of pastures, ponds, views, woods and trails. The modern home stands out with red birch floors, cherry kitchen cabinets and wood burning fireplace, red cedar ceiling and natural woodwork in the living room.

(802) 253-1806

\$1,100,000

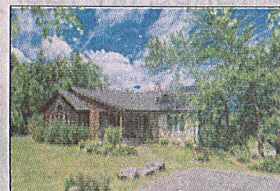


In the Heart of Stowe Village

This classic Stowe village home offers modern amenities while maintaining its original beauty and charm... spacious rooms, original wood floors, exposed beams, floor-to-ceiling stone fireplace, plus a kitchen fit for a chef. Just steps from village amenities.

(802) 253-1806

\$925,000

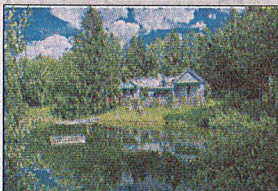


Well Maintained and Loved...

A joyful and inviting home on an impressive 5.3± acre site with panoramic Mt. Mansfield views and swimming pond. Offered furnished (some exclusions) and features 4 bedrooms, 4 baths, open floor plan, wood burning fireplace, spacious den, and recreation room.

(802) 253-9771

\$875,000



Pinnacle Road, Stowe

This wonderful 3 bedroom, 3 bath Stowe Hollow property offers 2,500+ square feet of living space, a beautiful pond and mountain views on 4± acres. Located in a highly desirable neighborhood with hiking trails, just minutes to Stowe Village.

(802) 253-9771

\$575,000



Choice Stonybrook Condominium

Enjoy the private, serene site with lush gardens and Mt. Mansfield views. This 4-BR home has many attractive features and improvements... upscale kitchen, first floor master suite with designer bathroom, custom built-ins, twin hot water heaters, new furnace.

(802) 253-9771

\$555,000



Heaven On Earth

This 3-BR, 3-BA home is immaculate inside and out! Enjoy a large, open kitchen with upgraded appliances, a spacious first floor master suite with jacuzzi tub, and a sunny family room which opens to a private deck. Set on 5.4± AC only 10 minutes to Stowe Village.

(802) 888-1102

\$400,000



Customize Your Dream Home

To Be Built - 4 bedroom, 2.5 bath Colonial home with open floor plan and 2-car attached garage. Developer/Builder will customize to suit. Set on 1.6± acres conveniently located in a quiet newer subdivision just outside the village of Morrisville.

(802) 253-9771

\$379,000

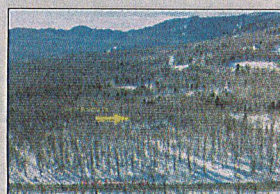


Lakeside Home, Elmore

This quiet, year-round lakeside home has 3 bedrooms, 2 baths, upgraded finishes, abundant natural light, plus plenty of space and privacy. The large deck and private dock provide opportunities for recreation and relaxation. Steady rental history.

(802) 253-1806

\$375,000

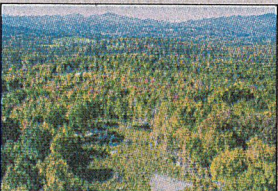


Build in Robinson Springs

10± Acres of pure serenity with Mt. Mansfield ski trail views and the potential for a 5 bedroom home. This desirable enclave offers a common pond, tennis courts and a private trail network. Just minutes from Stowe Village and the ski resort. Priced to sell.

(802) 253-1806

\$375,000

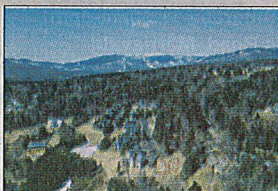


Incredible View Lot - Waterbury Center

11.7± Acre parcel with perhaps the most magnificent views you've ever seen! This gently sloping lot is permitted for a 5 bedroom home. Electric, phone and cable at lot line. Easily accessible - close to winter and summer recreation and I-89.

(802) 253-9771

\$290,000

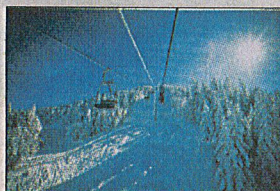


Stowe Highlands

This lot is ready for building with all the prep work complete! Easy hook-up to electricity, community septic, municipal water, and the driveway is already stubbed in. Ideal location - the perfect distance between the ski resort and Stowe Village.

(802) 253-1806

\$189,500



Skiing the Dream at Smuggs

Welcome to Smugglers' Notch Resort Villmarksauna #13, a 2 bedroom, 2 bath end unit overlooking the river...open floor plan, fireplace, 2 decks and lots of natural light. Many amenities including the FunZone 2.0. Trails just steps away! RCI member.

(802) 253-1806

\$185,000

LUXURY
PORTFOLIO
INTERNATIONAL



LEADING REAL ESTATE
COMPANIES OF THE WORLD



goo.gl/gHWRz



PALL SPERA COMPANY

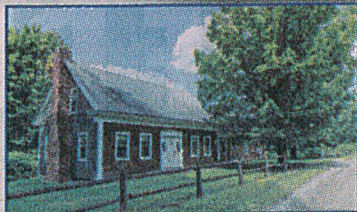
REALTORS, LLC

WWW.PALLSPERA.COM

65-5 NORTHGATE PLAZA - P.O. BOX 507

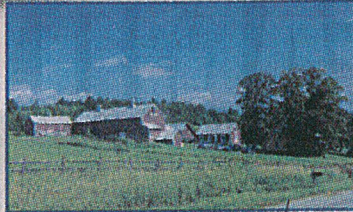
MORRISVILLE, VERMONT 05661

MAIN 802.888.1102 | TOLL FREE 877.888.4679



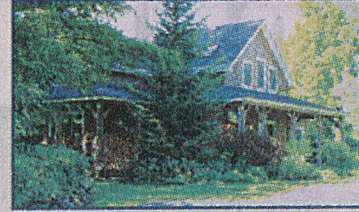
Quintessential Country Estate

Quintessential country estate on 75± acres with a vintage 1830's post and beam farmhouse. The 5-BR home exudes country charm with original floors and exposed beams. Meadows, a large pond & mountain views complement this inviting country property.
(802) 253-1806 \$1,300,000



Valley View Farm

Magnificent 135.5± acre conserved farm with large barn and 3 apartment farmhouse complex - sugar house, meadows and woods, Current Use and Vermont Land Trust conservation. Located 2 miles from Stowe. Truly special!
(802) 253-9771 \$850,000



Stunning Post & Beam

Stunning home on 72± acres with swimming ponds, dock and storage shed. Open floor plan... tiled foyer with dog shower, gourmet kitchen, island, formal dining, master suite with walk-in closet and Jacuzzi tub. Potential for in-law suite.
(802) 888-1102 \$650,000



Unique St. Johnsbury Property

Spectacular 1875 post & beam barn, moved to a private 27± AC hilltop setting and converted to a 4-BR residence. Open-plan 1st floor with granite kitchen, exposed beams, walk-out basement, multiple heating options, and panoramic views. Just 8 minutes off I-91!
(802) 253-9771 \$489,000



Year-Round Lake Home

Spend your days along the edge of one of New England's most scenic and clean lakes - Lake Willoughby. This year-round 2 bedroom home on 0.33± acres enjoys 110 feet of private waterfront, upgraded kitchen appliances and a 2-car garage.
(802) 253-1806 \$429,000



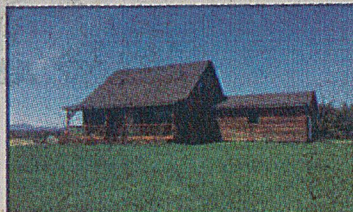
Lakeside Home, Elmore

Quiet, year-round lakeside home has 3 bedrooms, 2 baths, upgraded finishes, abundant natural light, plus plenty of space and privacy. The large deck and private dock provide opportunities for recreation and relaxation. Steady rental history.
(802) 253-1806 \$375,000



Private Contemporary, Hyde Park

This 3,780± sq. ft. home offers 3 bedrooms, 3 baths, expansive rooms, tile floors, formal dining area, gas fieldstone fireplace, and a gourmet kitchen with cherry cabinets and stainless steel appliances. Complete privacy on 8.7± acres near hiking trails.
(802) 888-1102 \$325,000



Location! Location!

Located between Stowe and Morrisville, this spacious 1995 cape offers a good flow and great functionality... 4 bedrooms, 2 baths, mudroom, covered porch, and an attached 2-car garage. This home can fit many lifestyles.
(802) 888-1102 \$249,000



Sweet Home!

This welcoming 3 bedroom, 2 bath home awaits new owners. First floor bedroom & bath, full insulated basement ready for additional finished space or entertaining, attached 2-car garage, and private back yard. Convenient location, close to amenities.
(802) 888-1102 \$195,000



NANCY DURAND • PENNY MASON-ANDERSON • NANCY FRITCHARD
LAUREL HOULE • CASEY GRONDIN • ANGELA LAMBERT • MONICA HEATH • BOB DURAND



goo.gl/2Trqk