



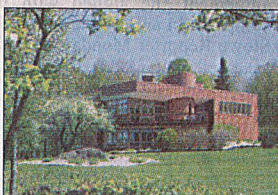
PALL SPERA COMPANY REALTORS, LLC

WWW.PALLSPERA.COM

1800 MOUNTAIN ROAD, STOWE - 802.253.9771

62 MAIN STREET, STOWE - 802.253.1806

65-5 NORTHGATE PLAZA, MORRISVILLE - 802.888.1102

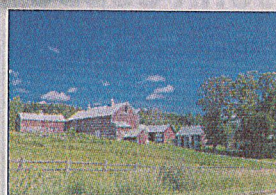


Geometry In the Mountains

Multi-level 5 bedroom, 5 bath residence on 6.6+ acres with gorgeous views towards Camel's Hump. The interior features a greenhouse, elevator, indoor basketball half court, 2 laundry rooms, and an in-law suite with separate screened porch.

(802) 253-9771

\$899,000



Valley View Farm

Magnificent 135.5+ acre conserved farm with large barn and 3 apartment farmhouse complex - sugar house, meadows and woods. Current Use and Vermont Land Trust conservation. Conveniently located on Stagecoach Road just 2 miles to Stowe. A special property!

(802) 253-9771

\$850,000



Restored Antique Farmhouse

Completely restored 3-BR antique farmhouse on 58+ AC, with 55+ AC enrolled in VT's Land Use Program. Panoramic mountain & valley views! Radiant heat, exposed hand-hewn beams, refinished old growth planks & wide pine floors. Chef's kitchen, barn, garage & more.

(802) 253-1806

\$675,000



Amazing Acreage In Elmore

FIELDS, FOREST and VIEWS! 302+ Acre parcel with complete serenity and beauty. Walk the wooded trails, fish in the stream, enjoy beautiful sunsets. Quaint Elmore Village is close by. Selectively logged with mountain views. Ideal horse country!

(802) 888-1102

\$650,000

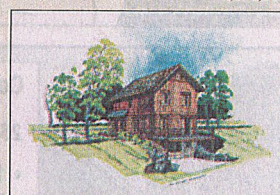


Stowe Apartment Building

8-Unit (1-BR and 2-BR) apartment building in an outstanding location for proximity to Stowe Village, ski area and Morrisville. Large private rear lawn faces Mt. Mansfield across the Little River. Units in high demand with a very stable tenant list.

(802) 253-9771

\$650,000



Build Your Dream Home

To Be Built by Gristmill Builders - 3 BR, 2 BA, 2500+ sq. ft. home with attached 2-car garage on a beautiful 2+ acre lot. High end finishes. Southern exposure overlooking open fields and stunning mountain views. Minutes to both I-89 and Stowe.

(802) 253-9771

\$650,000

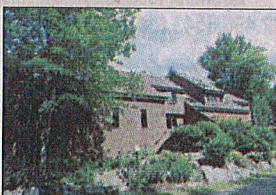


"North Farm" Johnson

A beautifully renovated gem of a farmhouse with classic antique details, high ceilings, sunny open floor plan, main floor master, front porch. Set upon 59+ acres with mountain views, meadows, and 4-stall barn with heated workshop. Private yet convenient location.

(802) 253-1806

\$544,000



Spacious Stonybrook Condominium

One of the largest condo units in the desirable enclave of Stonybrook. This unit is slightly over 4,000 square feet with 5 bedrooms, 5 bathrooms and is offered furnished. Convenient location, surrounded by 160 acres of woods, ponds and trails.

(802) 253-9771

\$499,000

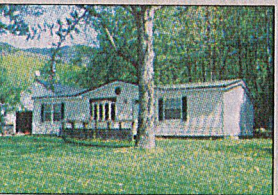


One of a Kind!

Eclectic, architecturally designed schoolhouse complete with the original bell! Open concept floor plan, wood floors throughout, sunroom, screened porch, plus master bedroom has Hearthstone gas stove and radiant heat. 10+ Acre setting with beautiful gardens.

(802) 888-1102

\$280,000

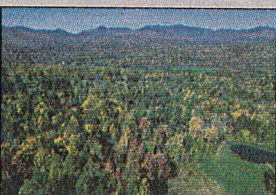


Stowe Hollow

Good starter home on 1.6+ acres with beautiful ledge outcropping behind home. 3 Bedrooms including main floor master bedroom, 2 full baths, large, open, living/dining/kitchen. Attached, heated, oversized garage with ramp entrance into mudroom.

(802) 253-9771

\$250,000

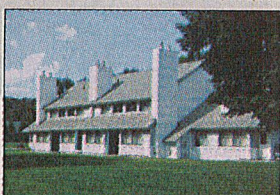


Private Stowe Land Parcel

At the end of the drive, 120 Ollies Lane sports views toward Mt. Mansfield and a private location. 3.13+ Acres with a waste water permit for a 4 bedroom residence and 2 bedroom apartment make this building lot a prime candidate for your new home.

(802) 253-1806

\$190,000



Village Green Quartershare, Stowe

Own 1/4 of this 2 BR condo, 13 weeks/year on a rotating basis (rotation "C"). Amenities include indoor and outdoor pools, tennis courts, common building w/ game room, sauna, hot tub. Furnished and equipped. Membership available to RCI. Great location.

(802) 253-9771

\$5,000

LUXURY
PORTFOLIO
INTERNATIONAL



LEADING REAL ESTATE
COMPANIES OF THE WORLD





PALL SPERA COMPANY

REALTORS, LLC

WWW.PALLSPERA.COM

65-5 NORTHGATE PLAZA - P.O. BOX 507

MORRISVILLE, VERMONT 05661

MAIN 802.888.1102 | TOLL FREE 877.888.4679



Land Abutting Copley Hospital

This flat 5.2± AC parcel with beautiful views, abuts Copley Hospital/Copley Campus and Copley Country Club. In Morrisville's 'Special Use District' - ideal for a professional office & other healthcare or non-healthcare uses. Add'l acreage available.
(802) 253-1806 \$630,000



Home with Acreage

This property offers a sugarhouse, winding brook, 184.5± acres, 2 outbuildings, a 2 bedroom, 2 bath home with full basement, and an attached 2-car garage. Road frontage on 3 roads and endless outdoor recreational opportunities.
(802) 888-1102 \$460,000



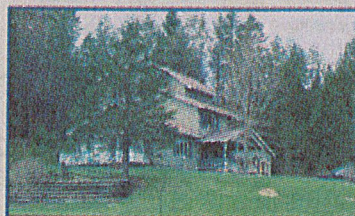
Spacious and Private

Fresh paint - new price! Spacious 3-BR, 3-BA home boasts a large mudroom, open kitchen/dining area, custom cabinetry, large kitchen island and more! Set on 12± private acres (abuts State land) with views, pool, landscaped grounds, and near amenities.
(802) 253-1806 \$390,000



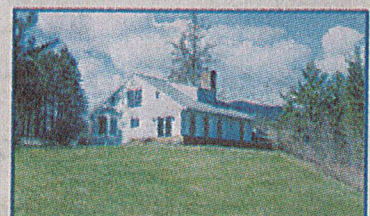
Oak Ridge Estates, Morristown

Enjoy views of the Worcester Range, Camel's Hump, and the Green Mountains from this 3-BR, 2.5-BA cape-style home...wood and tile floors, main floor laundry, wood burning fireplace, and the perfect covered country porch! Easy access.
(802) 253-9771 \$369,000



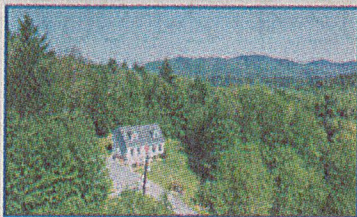
Renovated Contemporary w/ Outbuildings

3-BR, 2-BA home with attached garage offers main floor BR and laundry, gourmet kitchen, and living room with vaulted ceilings. Includes a 60X32 commercial building with offices, kitchen and bath. The 10± AC setting has a pond and mountain views!
(802) 888-1102 \$365,000



Your Vermont Getaway

This light-filled contemporary farmhouse is turn-key, offered fully furnished. The 2,372± sq. ft., 3-BR, 3-BA home has been finished with a commitment to Vermont charm. Set upon 10± private acres with panoramic views, near recreation opportunities.
(802) 253-1806 \$295,000



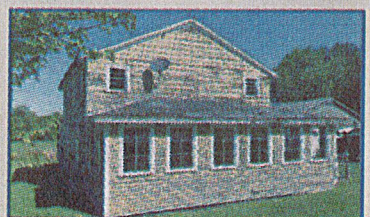
Live Where You Play!

A well maintained 3 bedroom cape on 1.65± AC, in a convenient location close to Route 15 - ideal for commuters. Over 2000± sq. ft. including a den w/ wood burning fireplace, bar, a beer tap system awaiting your craft brew, a private deck and yard.
(802) 253-1806 \$240,000



Hill Top Home

Don't miss this 3 bedroom, 2 bath hill top home with a basement already plumbed for another bath. 3+ AC lot offers privacy and plenty of lawn space to enjoy. Raised veggie beds, a waterfall, and perennials abound. Short distance to Johnson State College.
(802) 888-1102 \$225,000



Potential!

This affordable property offers a lot of potential in a convenient Morristown location. Open concept main floor, 4 bedrooms on the second floor, and an enclosed porch front. Set on a half-acre lot with a detached 2-car garage.
(802) 888-1102 \$129,000



NANCY DURAND • PENNY MASON-ANDERSON • NANCY PRITCHARD
LAUREL HOULE • CASEY GRONDIN • ANGELA LAMBERT • MONICA HEATH • BOB DURAND