



PALL SPERA COMPANY

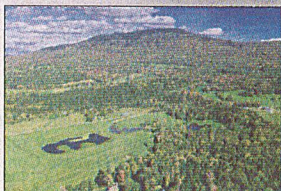
REALTORS, LLC

WWW.PALLSPERA.COM

1800 MOUNTAIN ROAD, STOWE - 802.253.9771

62 MAIN STREET, STOWE - 802.253.1806

65-5 NORTHGATE PLAZA, MORRISVILLE - 802.888.1102



Vermont Country Living

A distinguished Vermont estate, set upon 68± acres of pastures, ponds, views, woods and trails. The modern home stands out with red birch floors, cherry kitchen cabinets and wood burning fireplace, red cedar ceiling and natural woodwork in the living room.

(802) 253-1806

\$1,100,000

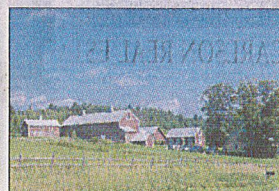


The Cabin in the Woods

Spectacular Stowe residence set upon 20+ private acres with a 2-acre pond. The 4 bedroom home features wood floors, stone fireplace, beamed ceilings, gourmet kitchen, granite counter tops, butler's pantry, patio, covered porch and attached 3-car garage.

(802) 253-9771

\$899,000

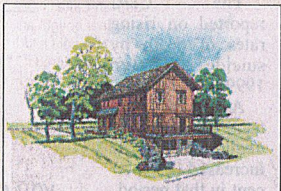


Valley View Farm

Magnificent 135.5± acre conserved farm with large barn and 3 apartment farmhouse complex - sugar house, meadows and woods. Current Use and Vermont Land Trust conservation. Located 2 miles from Stowe. A truly special property loaded with potential!

(802) 253-9771

\$850,000



Build Your Dream Home

TO BE BUILT by Gristmill Builders - 3 BR, 2 BA, 2500± sq. ft. home with high end finishes and attached 2-car garage. The beautiful 2± acre site enjoys southern exposure overlooking open fields and stunning mountain views. Minutes to I-89 and Stowe.

(802) 253-9771

\$650,000

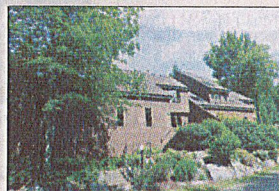


Slayton Farm, Moscow Area

Private and tranquil, end of road, country setting. 3 Bedroom, 3 bath expanded cape-style home on almost 6 acres with large pond. Lovely Stowe property with a great yard for play and pets. Perfect for family or a weekend or vacation getaway.

(802) 253-9771

\$535,000



Spacious Stonybrook Condominium

One of the largest condo units in the desirable enclave of Stonybrook. This unit is slightly over 4,000 square feet with 5 bedrooms, 5 bathrooms and is offered furnished. Convenient location, surrounded by 160 acres of woods, ponds and trails.

(802) 253-9771

\$499,000

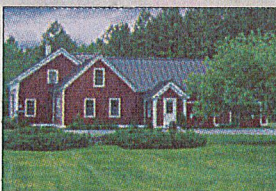


Vintage Vermont

Built in 1825, this gem has been lovingly restored and maintained. The 2-BR farmhouse has a superb post and beam frame with a well laid out floor plan. Sited on 62± AC with Worcester Range views and a large swimming pond. Located in Waterbury Center.

(802) 253-9771

\$459,000



Excellent Visibility

2,400+ Square foot commercial/residential building on 1.3± acres. Formerly a vet's office on the main level with a 2 bedroom residential apartment on the second level. Could be converted to solely residential use. Highly visible Hyde Park location.

(802) 253-9771

\$395,000

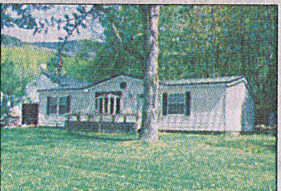


Furnished Stowellake Condominium

Well maintained 3 bedroom, 3 bath condo with fresh paint throughout and lock-off option. Enjoy access to Stowellake Spa, pool, tennis and more - plus the Stowe rec path and trolley stop are just steps away. Rain or shine, there is always something to do here!

(802) 253-1806

\$390,000

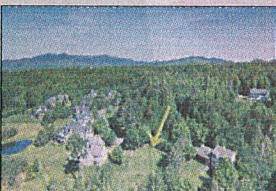


Stowe Hollow, Stowe

Good starter home on 1.6± acres with beautiful ledge outcropping behind home. 3 Bedrooms including main floor master bedroom, 2 full baths, large, open, living/dining/kitchen. Attached, heated, oversized garage with ramp entrance into mudroom.

(802) 253-9771

\$250,000



Stowe Highlands

This lot is ready for building with all the prep work complete! Easy hook-up to electricity, community septic, municipal water, and the driveway is already stubbed in. Ideal location - the perfect distance between the ski resort and Stowe Village.

(802) 253-1806

\$189,500



Looking for a TINY House?

Enjoy year-round living on a lovely country road. Hand-crafted and fully renovated. Just a short walk to Lake Elmore for boating, swimming, hiking, and biking. The 1.5± acre setting includes a large clear pond for summer and winter fun. One level living!

(802) 888-1102

\$119,000

LUXURY
PORTFOLIO
INTERNATIONAL



LEADING REAL ESTATE
COMPANIES OF THE WORLD





PALL SPERA COMPANY

REALTORS, LLC

WWW.PALLSPERA.COM

65-5 NORTHGATE PLAZA - P.O. BOX 507

MORRISVILLE, VERMONT 05661

MAIN 802.888.1102 | TOLL FREE 877.888.4679

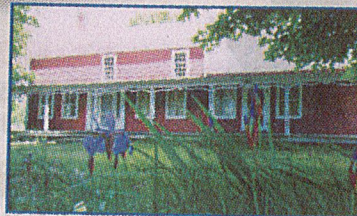


The Essence of Vermont Country Living

This 27± AC homestead is fully self-sufficient and off-the-grid. The 4 bedroom, 3 bath log cabin has 2,496± sq. ft. Enjoy trails, brooks, waterfalls, mountain views, and thousands of maples flowing with sap in spring! Additional land available.

(802) 253-1806

\$699,000



Vintage Vermont Farmhouse

305± Acres of farm, forest and pasture land, several outbuildings, and a delightful 3-BR, 3-BA home with original wood floors. A quiet country setting with majestic mountain views. Ideal for equestrians, agricultural enthusiasts and hobby farmers.

(802) 888-1102

\$525,000



Peaceful Setting in Wolcott

Well maintained 4-BR, 4-BA home in an 11.4± acre setting with mountain views! Oak floors, gas FP, screened porch, and attached 2-car garage. In-law studio with private entrance on lower level. New boiler, oil tank, and hot water heater in 2012.

(802) 253-9771

\$465,000



Montpelier Gem

Overlook a century-old farm from this well maintained 3-BR, 2-BA home. Wonderful living space...enjoy fireplaces in the great room and family room and a finished lower level. Gracious yard with beautiful gardens on a prestigious corner lot.

(802) 253-9771

\$395,000



Heaven on Earth

Immaculate inside and out! Enjoy 3-BR, 3-BA, a large, open kitchen with upgraded appliances, a spacious 1st floor master suite with jacuzzi tub, and a family room which opens to a private deck. 5.4± AC setting only 10 minutes to Stowe Village.

(802) 888-1102

\$384,000



Lake Views

Beautiful 3-BR, 2-BA contemporary home, built in 2016, with a spacious and welcoming floor plan and vaulted ceilings. The master bedroom has a large deck with grand views of the lake. Also offers radiant heat, 2-car garage, and many extras.

(802) 888-1102

\$340,000



Private Cedar Log Home

Reconnect with nature in this private home with pond and waterfall on 25± acres. Home offers abundant natural light, main floor master with large walk-in closet, cozy loft, finished basement, and 2-bay garage with large workshop & storage.

(802) 888-1102

\$295,000



A Unique Find

Ideal for artists or small business owners desiring to live and work in a rural setting. The 3 bedroom, 3,510± sq. ft. home retains the character of the general store and dance hall it formerly housed. Beautiful 1.5± AC setting with pond.

(802) 888-1102

\$125,000



Build Your Dream Home!

Three lots available in a lovely country setting in Hyde Park, ranging from 2.09± to 6.3± acres. Each lot is permitted for a 4 bedroom home. Just minutes to shopping, outdoor recreation, farmer's markets, annual festivals, and schools.

(802) 888-1102

Starting at \$24,500



NANCY DURAND • PENNY MASON-ANDERSON • NANCY PRITCHARD
LAUREL HOULE • CASEY GRONDIN • ANGELA LAMBERT • MONICA HEATH • BOB DURAND

7/5/18