

FROM THE VALLEY TO THE MOUNTAINS REAL ESTATE SALES AND RENTALS.



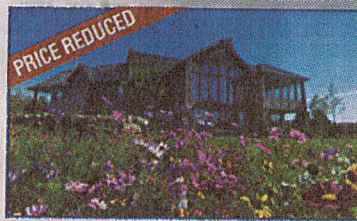
**PALL SPERA
COMPANY**
REALTORS, LLC

WWW.PALLSPERA.COM

65-5 NORTHGATE PLAZA - P.O. BOX 507

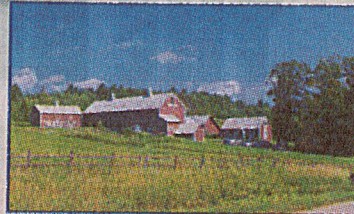
MORRISVILLE, VERMONT 05661

MAIN 802.888.1102 | TOLL FREE 877.888.4679



Spectacular Northeast Kingdom Estate

Extraordinary private enclave in the hills of the Northeast Kingdom...the exceptional 8,200± sq. ft. home is set atop a knoll with 360-degree mountain views and surrounded by 287± acres of open meadows & woodlands. Easily accessible from I-91.
(802) 253-9771 **\$3,100,000**



Valley View Farm

Magnificent 135.5± acre conserved farm w/large barn and 3 apartment farmhouse complex - sugar house, meadows and woods, Current Use and Vermont Land Trust conservation. Located 2 miles from Stowe. A truly special property loaded with potential!
(802) 253-9771 **\$850,000**



Johnson Commercial Opportunity

Thriving gas station/convenience store/deli at the junction of high-traffic Routes 100C and 100 including business and store equipment. Updated gasoline storage, repaved parking lot, outdoor LED lighting. 1.1± AC lot offers additional potential.
(802) 253-9771 **\$659,000**



Restored Antique Farmhouse

Restored 3-BR antique VT farmhouse on 58± AC. 55± AC enrolled in VT's Land Use Program. Panoramic mountain & valley views! Radiant heat, exposed hand-hewn beams, refinished old growth planks & wide pine floors, Chef's kitchen, barn, garage & more.
(802) 253-1806 **\$655,000**



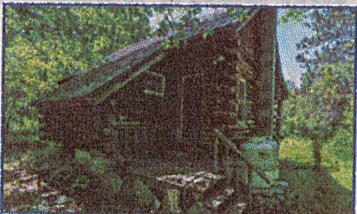
Complete Privacy

3 Bedroom, 3 bath contemporary home on 8.7± acres with all the amenities you desire... spacious rooms, gourmet kitchen, master suite with walk-in closet, gas field stone fireplace, finished walkout lower level, and a deck for summer enjoyment.
(802) 888-1102 **\$325,000**



Beautiful Property

Enjoy one level living in this lovely 3-BR, 2-BA home on 2.29± AC. Features include hardwood floors in the kitchen and living room, a covered porch, master bedroom with bath, and an attached 2-car garage. Close to Stowe and Morrisville amenities.
(802) 888-1102 **\$289,000**



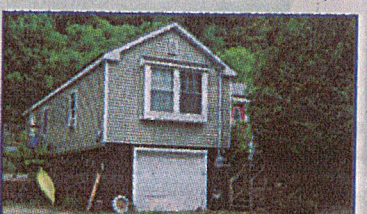
Elmore Cabin in the Woods

This 2 bedroom cabin is set on a level 1.5± acre lot and enjoys a pristine central location within 7± miles of Stowe Village, 18± miles of Waterbury, & 6± miles of downtown Morrisville. Come find your retreat on Elmore Mountain Road!
(802) 253-1806 **\$205,000**



Well Maintained Home

This well maintained 3 bedroom, 2 bath home offers an open floor plan with a huge kitchen, dining and living areas, and separate laundry room. Set on 1.5± acres in Westfield with an attached garage. A great property at a great price!
(802) 888-1102 **\$182,500**



Cute Home with In-Law Suite

Cute 3 bedroom, 2 bath home with mother-in-law suite and many upgrades! New furnace, vinyl siding, metal roof, town water and sewer. End-of-road location, spacious side yard, and within walking distance of schools and downtown Morrisville.
(802) 888-1102 **\$160,000**



NANCY DURAND • PENNY MASON-ANDERSON • NANCY PRITCHARD
LAUREL HOULE • CASEY GRONDIN • ANGELA LAMBERT • MONICA HEATH • BOB DURAND



PALL SPERA COMPANY

REALTORS, LLC

WWW.PALLSPERA.COM

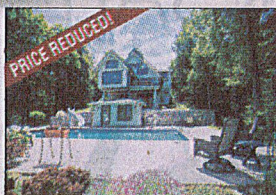
1800 MOUNTAIN ROAD, STOWE - 802.253.9771

62 MAIN STREET, STOWE - 802.253.1806

65-5 NORTHGATE PLAZA, MORRISVILLE - 802.888.1102



Spectacular Northeast Kingdom Estate
Extraordinary private enclave in the hills of the Northeast Kingdom...the exceptional 8,200± sq. ft. home is set atop a knoll with 360-degree mountain views and surrounded by 287± acres of open meadows and woodlands. Easily accessible from I-91.
(802) 253-9771 **\$3,100,000**



Bonaventure ~ Morristown
Exquisite country estate comprised of a 3-bedroom main house, 2-bedroom guest cottage and a 3-bay garage with apartment. Located in the Ten Bends community overlooking waterways and mountain vistas, and with excellent fishing and hiking trails.
(802) 253-9771 **\$1,399,000**



Vermont Farm Estate
Magnificent estate (4-BR home with 356± acres) nestled at the base of the Worcester Range. A home with so many rooms, storage areas and potential there is not space enough to list them! Incredible free-standing barn that measures 48x96 with its own office.
(802) 253-9771 **\$1,100,000**



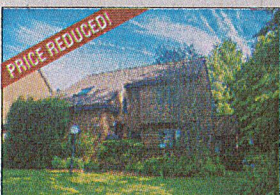
Geometry In the Mountains
Multi-level 5 bedroom, 5 bath residence on 6.6+ acres with gorgeous views towards Camel's Hump. The interior features a greenhouse, elevator, indoor basketball half court, 2 laundry rooms, and an in-law suite with separate screened porch.
(802) 253-9771 **\$899,000**



Renovated Stowe Home
Completely renovated 3-BR, 4-BA home. Quality finishes, from professional gas range with copper hood, granite countertops and custom cabinetry in the kitchen, to marble in the baths with slate and glass tile showers. Set on 3± acres with direct Mt. Mansfield views.
(802) 253-1806 **\$799,000**



Savage Pond Townhome
Luxury townhome with 3 fireplaces and great views. 3000± Sq. ft. with 3 bedrooms, 4 baths, den, and garage. Many renovations: cherry floors, custom granite counters, Hunter Douglas plantation shutters, finished walkout lower level, and more!
(802) 253-9771 **\$615,000**



Choice Stonybrook Condominium
Enjoy the private, serene site with lush gardens and Mt. Mansfield views. This 4-BR home has many attractive features and improvements: upscale kitchen, first-floor master suite with designer bathroom, custom built-ins, twin hot water heaters and new furnace.
(802) 253-9771 **\$495,000**



Unique St. Johnsbury Property
Spectacular 1875 post & beam barn, moved to a private 27± acre hilltop setting and converted to a 4-BR residence. Open plan 1st floor with granite kitchen, exposed beams, walk-out basement, multiple heating options, and panoramic views. Just 8 minutes off I-91!
(802) 253-9771 **\$469,000**



Mansfield View
Updated and efficient 4 bedroom, 4 bath home in a terrific neighborhood! Offering winter views of the Mansfield Range, this 1.3± acre lot is close to Stowe Village, shops and the Rec Path. Ideal as a vacation retreat or full-time residence.
(802) 253-9771 **\$383,000**



Picturesque New England Homestead
Enjoy 110± acres of stunning pastures, meadows, forest, mountain views and 3 ponds in Groton. A 3-story classic red barn complements the 4-BR farmhouse...a charming site for a hobby farm, B&B, wedding venue, or simply a private escape. Access to the VAST trails.
(802) 253-1806 **\$380,000**



Escape to the Lake...
Seasonal 4-BR camp with 150± feet of frontage on beautiful Lake Elmore! This is the perfect summer destination with swimming, fishing, hiking, and more just steps from your door. Ideal for gatherings with a level lawn and deck overlooking the lake.
(802) 253-1806 **\$215,000**



Exceptional View Parcel
Gently sloping 5.2± acre parcel with exceptional mountain views. Cleared, usable land. Permitted for a 5-BR home. Roughed-in driveway and electric, phone and cable to lot line. Easily accessible location close to winter and summer recreation and I-89.
(802) 253-9771 **\$175,000**

LUXURY
PORTFOLIO
INTERNATIONAL



LEADING REAL ESTATE
COMPANIES OF THE WORLD

