



# PALL SPERA COMPANY REALTORS, LLC

WWW.PALLSPERA.COM

1800 MOUNTAIN ROAD, STOWE - 802.253.9771

62 MAIN STREET, STOWE - 802.253.1806

65-5 NORTHGATE PLAZA, MORRISVILLE - 802.888.1102



## Modern Stowe Estate

A modern Stowe Hollow home on 4.5± acres with Mt. Mansfield views across the spring-fed pond. The 6,815± sq. ft. home offers a high level of finish, 3 fireplaces, large windows, oversized deck, in-law suite, and finished walkout lower level.

(802) 253-1806

\$1,795,000



## "Long View" Stowe

Robinson Springs...Exceptional contemporary residence with 3 bedrooms, 4 baths and massive Stowe valley views. Architect designed, quality construction, materials and finishes. Mature, professional landscaping accented by stone walls and patios.

(802) 253-9771

\$1,750,000

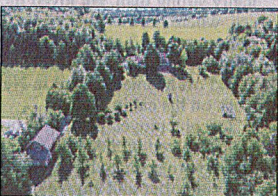


## Luxurious Vermont Living

5,700± Sq. ft. of luxury with 5 bedrooms and 6 baths, this home is constructed of natural materials, built in two phases: the original stone house and a new contextual addition. A pool house and tennis court complete the impressive 11± AC property.

(802) 253-9771

\$1,100,000

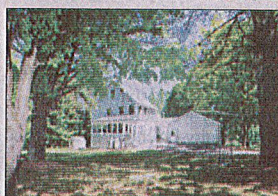


## Eclectic Estate-Like Property

This incredible 30± acre property offers complete privacy and convenience to amenities. Gourmet kitchen, library, wood burning fireplace, 3-season sunroom, covered porch, plus separate guest quarters, and an oversized barn/garage. A must see!

(802) 888-1102

\$630,000



## River Road, Stowe

Pleasant 4 bedroom, 2 bath residence with attached 2-car garage in a convenient River Road location. The nicely shaded 1.16± acre lot has a garden site and offers school bus access. Adjacent 1± lot and Gambrel barn are also available.

(802) 253-9771

\$495,000



## Montpelier Gem

Overlook a century-old farm from this well maintained 3-BR, 2-BA home. Wonderful living space...enjoy fireplaces in the great room and family room and a finished lower level. Gracious yard with beautiful gardens on a prestigious corner lot.

(802) 253-9771

\$395,000



## Beautiful Property

Enjoy one level living in this lovely 3-BR, 2-BA home on 2.29± AC. Features include hardwood floors in the kitchen and living room, a covered porch, master bedroom with bath, and an attached 2-car garage. Close to Stowe and Morrisville.

(802) 888-1102

\$269,000

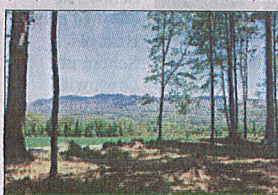


## Elmore Cabin in the Woods

This 2 bedroom cabin is set on a level 1.5± acre lot and enjoys a pristine central location within 7± miles of Stowe Village, 18± miles of Waterbury, and 6± miles of downtown Morrisville. Come find your retreat on Elmore Mountain Road!

(802) 253-1806

\$205,000



## Exceptional Private Building Lot

9.38± Acre lot with mountain views, overlooking a beautiful open field area. Roughed-in driveway and septic design for a 6 bedroom home. Close to I-89, Waterbury Reservoir and other recreation opportunities - hiking, skiing, VAST trails.

(802) 253-9771

\$190,000



## Country Building Lots

Four beautiful lots, ranging from 3.45± - 4.4± acres. Private setting in the valley of the Worcester Range with mountain views. Each is permitted for up to 5 or 6 bedrooms. Septic system designed. Minutes to Stowe Village or Morrisville.

(802) 253-1806

Starting at \$85,000



## Excellent Value!

Two of Morristown's best valued building lots, each permitted for a 3-BR residence with municipal sewer hook-up at street. Lot G is 1.6± AC, Lot H is 1.9± AC. Private yet convenient location, just on the outskirts of the village.

(802) 253-9771

\$49,900 Each



## Sunny Building Lot

Sunny and mostly level 1.6± acre building lot with private access off of Brookview Lane in Wolcott - located only a mile from Lake Elmore. This surveyed lot has a septic design for a 3-bedroom sub-surface leach-field. VAST trails nearby.

(802) 253-1806

\$37,500

LUXURY  
PORTFOLIO  
INTERNATIONAL



LEADING REAL ESTATE  
COMPANIES OF THE WORLD







# PALL SPERA COMPANY

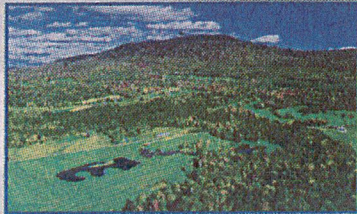
REALTORS, LLC

WWW.PALLSPERA.COM

65-5 NORTHGATE PLAZA - P.O. BOX 507

MORRISVILLE, VERMONT 05661

MAIN 802.888.1102 | TOLL FREE 877.888.4679



### Vermont Country Living

A distinguished estate, set upon 68± AC of pastures, ponds, views, woods and trails. The modern home stands out with red birch floors, cherry kitchen cabinets and a living room with wood burning fireplace, red cedar ceiling and natural woodwork.

(802) 253-1806

\$1,100,000

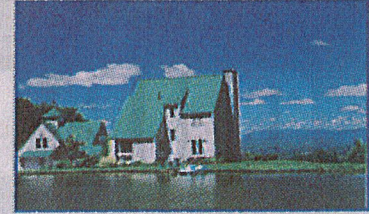


### Amazing Acreage in Elmore

FIELDS, FOREST and VIEWS! 302± Acre parcel with complete serenity and beauty. Walk the wooded trails, fish in the stream, enjoy beautiful sunsets. Quaint Elmore Village is close by. Selectively logged with mountain views. Ideal horse country!

(802) 888-1102

\$575,000



### Forever Views

For the adventurous, not for the faint of heart... Mountaintop living at its finest on 80± AC with a stocked pond in a private location in the Northeast Kingdom. The 5-BR, 5-BA home with heated 3-bay garage can accommodate family and friends.

(802) 253-9771

\$575,000

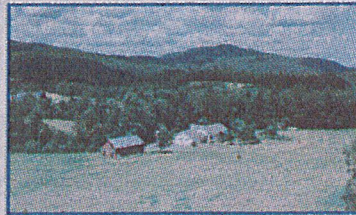


### Beautiful Renovated Post & Beam

This lovingly restored farmhouse on 14.8± acres has charm and character! Open floor plan, lots of natural light, fireplace, exposed beams, and wide plank floors. Two larger bedroom suites, pond, dairy barn, meadow, and privacy. A must see!

(802) 888-1102

\$350,000

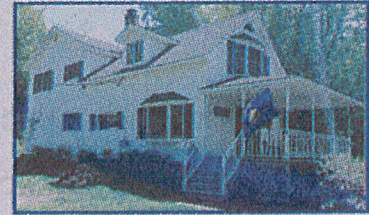


### Home on 58± Acres or More!

This property offers privacy on 58± AC (or more) and a well maintained home...3-BR, 4-BA, an open concept floor plan, and a walkout basement. A detached garage/workshop and established gardens provide additional options. Add'l 30± Acres Available.

(802) 253-1806

\$339,000

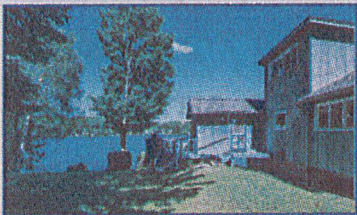


### Waterfront Living

3-Bedroom home on Lake Eden with 100± feet of sandy shore and a dock. Home features granite counters, master BR overlooking the lake, living room with wood stove, sitting area with sliding doors to covered porch and hot tub and a finished basement.

(802) 888-1102

\$319,000



### Escape to the Lake...

Seasonal 4-BR camp with 160± feet of frontage on beautiful Lake Elmore! This is the perfect summer destination with swimming, fishing, hiking, and more just steps from your door. Ideal for gatherings with a level lawn and deck overlooking the lake.

(802) 253-1806

\$215,000



### Home with Character

Looking for character and potential? This is the one! On a quiet street, this home has a country feel including a cute front porch with swing. Includes an oversized barn/garage with ample storage, and a private back yard with garden space.

(802) 888-1102

\$165,000



### Private 10-Acre Parcel

Welcome to this very private parcel of 10± acres of recreational land primarily located between Morristown and Johnson. The property falls in 2-acre zoning. Your private oasis awaits you at an affordable price!

(802) 253-1806

\$44,900



NANCY DURAND • PENNY MASON-ANDERSON • NANCY PRITCHARD  
LAUREL HOULE • CASEY GRONDIN • ANGELA LAMBERT • MONICA HEATH • BOB DURAND