



PALL SPERA COMPANY REALTORS, LLC

WWW.PALLSPERA.COM

1800 MOUNTAIN ROAD, STOWE - 802.253.9771

62 MAIN STREET, STOWE - 802.253.1806

65-5 NORTHGATE PLAZA, MORRISTOWN - 802.888.1102

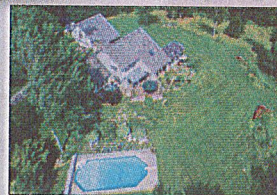


Spruce Peak at Stowe

4,500± sq. ft. mountain-chic home at Spruce Peak offering 5-BR, 5-BA, ski-in/ski-out access, ski trail views, contemporary lines, energy efficiency and access to incredible amenities. Built by Gristmill Builders, builders of the 2011 HGTV Dream Home.

(802) 253-1806

\$3,950,000



Magical Setting In Robinson Springs

Exceptional 23.5± AC. Stowe estate with 5 bedrooms and 6 baths. Magnificent mountain views and extensive perennial gardens enhance the magical setting of this private oasis, complete with swimming pool. The 23.5± AC is comprised of two parcels.

(802) 253-9771

\$1,792,500



Stowe Home For All Seasons

Enjoy this private 10± AC setting with pond and magnificent views! The 5-BR, 5-BA, 4,586± sq. ft. home features hardwood floors, updated kitchen and baths, custom built-ins, and exceptional attention to detail. Approx. 5 minutes to the village.

(802) 253-1806

\$1,350,000



Mountain Road, Stowe

Beautifully restored and meticulously maintained antique VT farmhouse, convenient to the village and Stowe Mountain Resort. Currently a 5000+ sq. ft. home and office space. Located in 'Mountain Road Crossroads' zoning - desirable setbacks and uses.

(802) 253-1806

\$990,000



Olde Sterling Farm, Stowe

Unique gentleman's farm...4-BR, 5-BA stone house, stable, 39± AC of pastures, woods and Sterling Brook running through. Everything is interesting: gym with solarium, hot tub, steam room, sauna and meditation bed, and a separate building with theater.

(802) 253-9771

\$890,000



Well Maintained Contemporary Cape

This 4,268± sq. ft. contemporary home is located in a wonderful, private Stowe neighborhood. Includes 5 bedrooms, an updated chef's kitchen, great room, and fireside reading area. Set on nearly 2 AC with lush perennial gardens and swimming pool.

(802) 253-9771

\$698,000



Renovated Colonial Farmhouse

Completely renovated 4-BR, 2-BA farmhouse on 2.75± AC with fruit trees and an established garden. Offers modern upgrades including kitchen and bathrooms and character in original doors, built-ins, hand painted light fixtures. Easily accessible.

(802) 253-1806

\$385,000

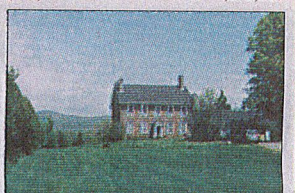


Oak Ridge Estates, Morristown

Enjoy views of the Worcester Range, Camel's Hump, and the Green Mountains from this 3-BR, 2.5-BA home...wood and tile floors, main floor laundry, wood burning fireplace, and the perfect covered country porch! Easy access to Morristown and Stowe.

(802) 253-9771

\$349,000

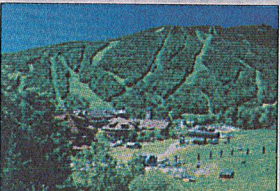


Lovingly Renovated

Classic brick farmhouse, circa 1830, in a private 2.2± acre setting with views of the Green Mountains. 4 Bedrooms, 3 baths, twin fireplaces in the dining room and living room, great room with wood stove, cathedral ceiling, and exposed beams.

(802) 888-1102

\$336,000



Stowe Mountain Lodge Studio

Full ownership studio unit at Stowe Mountain Lodge. Amenities include valet & 24-hr room service, restaurant, pool, luxury spa, fitness center, shopping. Enjoy skiing, zip lines, bike trails, Adventure Center, skating rink. Part of Epic Pass resorts.

(802) 253-9771

\$299,900

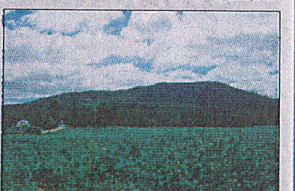


Robinson Springs, Stowe

Large, private, 15.2± acre building lot in the exclusive Robinson Springs neighborhood. Enjoy Worcester Mountain views, southern exposure, and direct access to Town of Stowe lands for hiking, biking, skiing and other recreational pursuits.

(802) 253-1806

\$250,000



Build Your Dream Home

1± Acre residential lot with approved 3 bedroom septic design and town water available. Private and quiet location offering stunning mountain views over fields protected from future building and development. Close to amenities.

(802) 253-1806

\$80,000

LUXURY
PORTFOLIO
INTERNATIONAL



LEADING REAL ESTATE
COMPANIES OF THE WORLD





PALL SPERA COMPANY

REALTORS, LLC

WWW.PALLSPERA.COM

65-5 NORTHGATE PLAZA - P.O. BOX 507

MORRISVILLE, VERMONT 05661

MAIN 802.888.1102 | TOLL FREE 877.888.4679



Eclectic Estate-Like Property!

This incredible 30-acre property offers complete privacy and convenience to amenities. Gourmet kitchen, library, wood burning fireplace, 3-season sunroom, covered porch, plus separate guest quarters, and an oversized barn/garage. A must see! (802) 888-1102 \$630,000



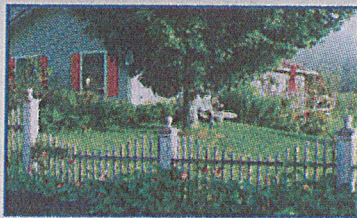
Custom Contemporary Home

Custom designed 6 bedroom, 4 bath home with clean lines and one-of-a-kind floor plan! The natural light welcomes all who enter; the open floor plan boasts a state-of-the-art kitchen, walls of windows, gas fireplace, radiant heat, and 10 ft. ceilings. (802) 888-1102 \$570,000



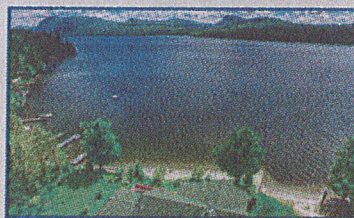
Unique Barnet Property

Spectacular 1875 post & beam barn, moved to a 27± AC hilltop setting and converted to a 4-BR residence. Open plan 1st floor with granite kitchen, exposed beams, walk-out basement, multiple heating options, and panoramic views. Just off I-91! (802) 253-9771 \$469,000



Black River Farm, Craftsbury

Privacy, mountain and water views, lovely gardens, fruit trees, and 35.5± acres of open meadows and woods! This 3 bedroom, 2 bath home has 1,916± sq. ft. of living area, a private deck, and access rights to the Black River. (802) 888-1102 \$450,000



Year-Round Lake Home

Spend your days along the edge of one of New England's most scenic and clean lakes - Lake Willoughby. This year-round 2 bedroom home on 0.33± acres enjoys 110 feet of private waterfront, upgraded kitchen appliances and a 2-car garage. (802) 253-1806 \$429,000



6-Unit Apartment Building

Welcome investors! This 6-unit apartment building consists of four 1-BR units, one 2-BR unit, and one efficiency unit. Set on a level 0.66± AC lot bordering the Lamolille River. Improvements include: roof (2015), septic (2014), and boiler. (802) 253-1806 \$350,000



Charming Cape

3 Bedroom, 2 bath home on 1+ acre. Lots of living space...large eat-in kitchen, wood stoves in both formal dining area and family room, plus a newly renovated sunroom. A 3-season porch, large deck and attached 2-car garage complete the property. (802) 888-1102 \$275,000



Camp on Lake Eden

Adorable camp with 122 feet of frontage on Lake Eden. Large screened porch, gorgeous mountain views, beautiful stone wall with built-in storage and attached 1-car garage. Swimming, fishing and hiking steps from your door! Being sold "as is". (802) 888-1102 \$200,000



Building Lot with Lake Frontage

Cadys Falls ~ A private 37± AC enclave surrounded by water, comprised of 9 lots. Lot 4 offers 3.25± AC with a large, cleared, level building site. Lot slopes down to frontage on Lake Lamolille. Southern exposure and distant mountain views. (802) 253-1806 \$50,000



NANCY DURAND • PENNY MASON-ANDERSON • NANCY PRITCHARD
LAUREL HOULE • CASEY GRONDIN • ANGELA LAMBERT • MONICA HEATH • BOB DURAND