



PALL SPERA COMPANY

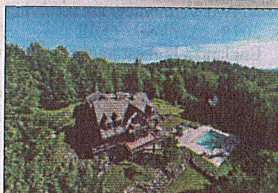
REALTORS, LLC

WWW.PALLSPERA.COM

1800 MOUNTAIN ROAD, STOWE ~ 802.253.9771

62 MAIN STREET, STOWE ~ 802.253.1806

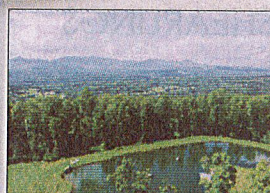
65-5 NORTHGATE PLAZA, MORRISVILLE ~ 802.888.1102



Little River Farm

A true family compound in Stowe on 2.2± acres. Spacious 7,000+ sq. ft. floor plan unlike any other offering. Built by Gristmill Builders, with pool and separate hobby barn. Located in the Little River Farm community with over 50 acres of common area. (802) 253-9771

\$1,375,000



Stowe Land Estate

Here it is, that unique parcel of land that cannot be duplicated. The 182± AC has an assortment of terrain, trails, creeks, waterfalls, an active sugarbush, and the most private of ponds! Incredible view potential. Adjacent to conserved land. (802) 253-1806

\$1,100,000



In the Heart of Stowe Village

This classic home offers modern amenities while maintaining its original beauty and charm...original wood floors, exposed beams, floor-to-ceiling stone fireplace, and a kitchen with gourmet appliances. Just steps from shops and restaurants. (802) 253-1806

\$925,000



Johnson Commercial Opportunity

Thriving gas station/convenience store/deli at the junction of high-traffic Routes 100C and 100 including business and store equipment. Updated gasoline storage, repaved parking lot, outdoor LED lighting. 1.1± AC lot offers additional potential. (802) 253-9771

\$659,000



Slayton Farm, Moscow Area

Private and tranquil, end of road, country setting. 3 Bedroom, 3 bath expanded cape-style home on almost 6 acres with large pond. Lovely Stowe property with a great yard for play and pets. Perfect for family or a weekend or vacation getaway. (802) 253-9771

\$479,000



Customize Your Dream Home

To Be Built - 4 bedroom, 2.5 bath Colonial with open floor plan and attached 2-car garage. Developer/Builder will customize to suit. Set on 1.6± acres conveniently located in a quiet newer subdivision just outside the village of Morrisville. (802) 253-9771

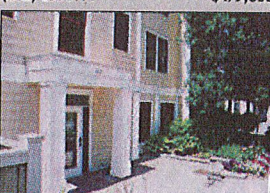
\$379,000



Your Vermont Getaway

This light-filled contemporary farmhouse is turn-key, offered fully furnished. The 2,372± sq. ft., 3-BR, 3-BA home has been finished with a commitment to Vermont charm. Set upon 10± private acres with panoramic views, near recreation opportunities. (802) 253-1806

\$295,000



Stowe Village Condominium

Bright, newly painted, 2 bedroom, 2 bath condo in the heart of Stowe Village with central A/C, gas fireplace, SS appliances, balcony, maple hardwood floors, and high-end washer and dryer. Walk to everything! Great rental history. (802) 253-9771

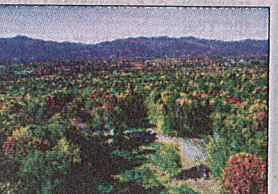
\$279,900



One Level Living at Its Best

Lovely 3 bedroom, 2 bath condo with beautiful back yard, perennial garden, and attached garage. Sunny kitchen with island, formal dining, master bedroom with bath, and large living room with slider to huge deck. Full basement could be finished. (802) 888-1102

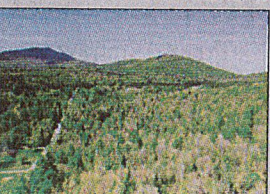
\$235,000



Ripley Springs, Waterbury Center

Spectacular 10± AC parcel with privacy and views of Mt. Mansfield, Camel's Hump and Waterbury Reservoir. Septic permit will be for a 4-5 bedroom system. Convenient location close to the Country Club of VT and I-89. Additional clearing potential. (802) 253-9771

\$219,000



100+ Acres of Opportunity!

101± Acres in Morristown - hills, valleys and streams ideal for hiking, biking, hunting, snow-shoeing and more. Current enrollment in VT's Current Use program offers significant tax advantages. Buyer will be responsible for obtaining permits. (802) 253-1806

\$195,000



Make This Home Your Own!

Enjoy the best of village living from this classic New England home with 4 bedrooms, 2 baths, private lawn and attached 2-car garage. This property has great potential for you to finish as you desire. Across from schools, fields and playgrounds! (802) 253-1806

\$175,000

LUXURY
PORTFOLIO
INTERNATIONAL



LEADING REAL ESTATE
COMPANIES OF THE WORLD





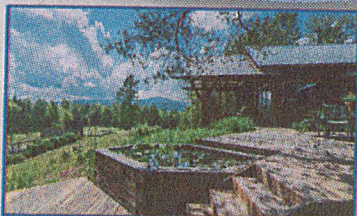
PALL SPERA COMPANY REALTORS, LLC

WWW.PALLSPERA.COM

65-5 NORTHGATE PLAZA - P.O. BOX 507

MORRISVILLE, VERMONT 05661

MAIN 802.888.1102 | TOLL FREE 877.888.4679



Award-Winning "Raven Beach"

An elegantly handcrafted home nestled thoughtfully into its lush 10.7± AC landscape, with mature gardens and mountain views. Every inch of this classic 2,300± sq. ft. contemporary, rebuilt in 2012, bears the creative stamp of its designer owners.

(802) 253-1806

\$950,000

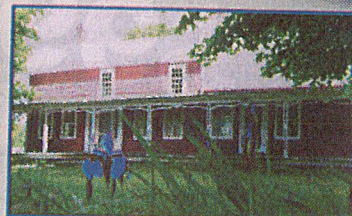


Restored Antique Farmhouse

Beautifully restored farmhouse on 58± AC. 55± AC enrolled in VT's Land Use Program. Panoramic mountain & valley views! 3-BR, radiant heat, exposed hand-hewn beams, refinished old growth planks & wide pine floors, chef's kitchen, barn, garage & more.

(802) 253-1806

\$599,000



Vintage Vermont Farmhouse

305± Acres of farm, forest and pasture land, several outbuildings, and a delightful 3-BR, 3-BA home with original wood floors. A quiet country setting with majestic mountain views. Ideal for equestrians, agricultural enthusiasts and hobby farmers.

(802) 888-1102

\$525,000



Oak Ridge Estates, Morristown

Enjoy views of the Worcester Range, Camel's Hump, and the Green Mountains from this 3-BR, 2.5-BA home... wood and tile floors, main floor laundry, wood burning fireplace, and the perfect covered country porch! Easy access to Morrisville and Stowe.

(802) 253-9771

\$349,000



Sweet Cottage & Barn

The sweet cottage of your dreams plus a horse/material/hobby barn! Set on 22± AC with fruit trees, berry bushes, pasture, and woods, the cottage boasts 2 bedrooms, a full kitchen, an open living area, and a covered porch. You won't want to leave!

(802) 888-1102

\$300,000



Turn-Key Smuggs Condo

Very well maintained and updated 4-BR, 3-BA, and unit in the Village West section of Smugglers' Notch Resort - prime location to the Funzone 2.0, pools, tennis courts, playgrounds, and more! There's plenty of room for all in this 3-level condo.

(802) 253-1806

\$240,000



So Many Possibilities!

Renovated 3-BR, 2-BA home offers gourmet kitchen with stainless steel appliances, living room with vaulted ceilings, and main floor BR and laundry room. The 8± AC site offers a 14' deep pond, magnificent mountain views, and several outbuildings.

(802) 888-1102

\$220,000



Build Your Dream Mountain Home

This 6± acre Elmore lot features spectacular mountain views which could be improved with additional clearing. Power is on site and driveway has been roughed-in. Elmore Lake, Stowe Mountain Resort, and Morristown amenities are nearby.

(802) 253-9771

\$159,000



Center Road, Hyde Park

22± Secluded, wooded acres in a private location that is near conveniences. Nice setting for possible off-the-grid camp. There are remains of an old stone fence along the right-of-way. A great opportunity - priced well below assessed value.

(802) 888-1102

\$65,000



NANCY DURAND • PENNY MASON-ANDERSON • NANCY FRITCHARD
LAUREL HOULE • CASEY GRONDIN • ANGELA LAMBERT • MONICA HEATH • BOB DURAND

FROM THE VALLEY TO THE MOUNTAINS REAL ESTATE SALES AND RENTALS.