



PALL SPERA COMPANY REALTORS, LLC

WWW.PALLSPERA.COM

1800 MOUNTAIN ROAD, STOWE - 802.253.9771

62 MAIN STREET, STOWE - 802.253.1806

65-5 NORTHGATE PLAZA, MORRISVILLE - 802.888.1102



Vermont Country Living

A distinguished estate, set upon 68± acres of pastures, ponds, views, woods and trails. The modern home stands out with red birch floors, cherry kitchen cabinets and a living room with wood-burning fireplace, red cedar ceiling and natural woodwork.

(802) 253-1806

\$1,100,000



Iconic & Historic Stowe Property

"The Fountain" Currently zoned as 2 condos. Condo A (main house) has 4,00± sq. ft., 5-BR, and a 1-BR apartment. Condo B (carriage house) has 2,454± sq. ft. and 3-BR. Wood floors and fireplaces/gas stoves throughout the units. Mt. Mansfield views.

(802) 253-9771

\$895,000



Weeks Hill Estate

Remodeled 5-BR cape with a bright and comfortable floor plan featuring a living room with 2 seating areas, a classic brick FP and a finished lower level. A stocked pond completes the idyllic 3.5± acre setting. Minutes from skiing and Stowe Village.

(802) 253-9771

\$690,000



Savage Pond Townhome

Luxury townhome with great views. 3,000± sq. ft., 3-BR, 4-BA, 3 fireplaces, den, garage and many renovations: cherry floors, custom granite counters, Hunter Douglas plantation shutters, finished walkout lower level and more! Excellent location.

(802) 253-9771

\$599,900



Choice Stonybrook Condominium

Enjoy the private, serene site with lush gardens and Mt. Mansfield views. This 4-BR home has many attractive features: upscale kitchen, 1st floor master suite with designer bathroom, custom built-ins, twin hot-water heaters and a new furnace.

(802) 253-9771

\$495,000



Quintessential New England Farmhouse

On 15± acres, this 4-BR, 2,794± sq. ft. home offers an authentic slice of Vermont! New standing-seam roof, upgraded boiler and water heater, replaced septic system and windows, in-ground swimming pool, barn, building for maple sugaring and 2-car garage.

(802) 253-1806

\$450,000



Spacious and Private

Fresh paint - new price! Spacious 3-BR, 3-BA home boasts a large mudroom, open kitchen/dining area, custom cabinetry and more! Set on 12± private acres (abuts State land) with great views, pool and landscaped grounds. Close to amenities.

(802) 253-1806

\$390,000



OPEN HOUSE | SUNDAY 12-3

OPEN HOUSE - Sunday, Sept. 2, 12-3

393 Oak Ridge Estates Road, Morristown - Enjoy views of the Worcester Range, Camel's Hump & the Green Mountains from this 3-BR, 2.5-BA home. Wood and tile floors, main-floor laundry, wood-burning FP and the perfect covered porch!

(802) 253-9771

\$349,000

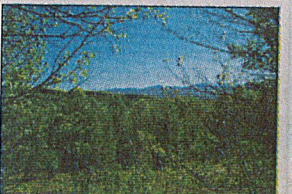


Mansfield View, Stowe

Updated and efficient 4 bedroom, 4 bath home in a terrific neighborhood! Offering winter views of the Mansfield Range, this 1.3± acre lot is close to Stowe Village, shops and the Recreation Path. Ideal as a vacation retreat or full-time residence.

(802) 253-9771

\$339,000



Robinson Springs, Stowe

Large, private 15.2± acre building lot in the exclusive Robinson Springs neighborhood. Enjoy Worcester Mountain views, southern exposure and direct access to Town of Stowe lands for hiking, biking, skiing and other recreational pursuits.

(802) 253-1806

\$250,000

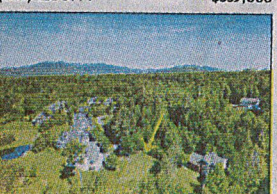


Find Your Home at Smugglers' Notch

Well-maintained 5-BA, 2-BA townhome in Village West at Smuggs - home of the Funzone 2.0. Courtside pool, tennis and basketball courts and more! The open-concept living/dining, brick-accented gas fireplace and large deck are yours to enjoy.

(802) 253-1806

\$224,900



Stowe Highlands

This lot is ready for building with all the prep work complete! Easy hook-up to electricity, community septic, municipal water and the driveway is already stubbed in. Ideal location - the perfect distance between the ski resort and Stowe Village.

(802) 253-1806

\$189,500

LUXURY
PORTFOLIO
INTERNATIONAL



LEADING REAL ESTATE
COMPANIES OF THE WORLD



REAL ESTATE SALES, AUCTIONS AND RENTALS



**PALL SPERA
COMPANY**
REALTORS, LLC

WWW.PALLSPERA.COM

65-5 NORTHGATE PLAZA - P.O. BOX 507

MORRISVILLE, VERMONT 05661

MAIN 802.888.1102 | TOLL FREE 877.888.4679



Classic Vermont Farmhouse

This ornate 3-BR, 3-BA home boasts built-ins, hand-painted stained-glass transoms, main floor master BR, formal dining room, gourmet kitchen, library, and living room with wood stove. On 3.8± acres with a huge barn, overlooking Woodbury Lake.

(802) 888-1102

\$495,000



Picturesque New England Homestead

Enjoy 110± acres of stunning pastures, meadows, forest, mountain views and 3 ponds in Groton. A classic red barn complements the 4-BR farmhouse. A charming site for a hobby farm, B&B, wedding venue or just a private escape. Access to VAST trails.

(802) 253-1806

\$380,000



Lakeside Home, Elmore

This quiet, year-round lakeside home has 3-BR, 2-BA, upgraded finishes, abundant natural light, plus plenty of space and privacy. The large deck and private dock provide opportunities for recreation and relaxation. Steady rental history.

(802) 253-1806

\$375,000

OPEN HOUSE | SUNDAY 12-3



OPEN HOUSE - Sunday, Sept. 2, 12-3

393 Oak Ridge Estates Road, Morristown - Enjoy views of the Worcester Range, Camel's Hump & the Green Mountains from this 3-BR, 2.5-BA home. Wood and tile floors, main-floor laundry, wood-burning FP and the perfect covered porch!

(802) 253-9771

\$349,000



Your Vermont Getaway

This light-filled contemporary farmhouse is turn-key, offered fully furnished. The 2,372± sq. ft., 3-BR, 3-BA home has been finished with a commitment to Vermont charm. Set upon 10± private acres with panoramic views, near recreation opportunities.

(802) 253-1806

\$295,000



Year-Round Lake Living

Lake living at its best! Home offers 3 bedrooms, 2 baths, an open floor plan, office, brick hearth for gas, pellet or wood stove, and a brand new furnace. Enjoy your private lake view from a wonderful covered porch!

(802) 888-1102

\$265,000

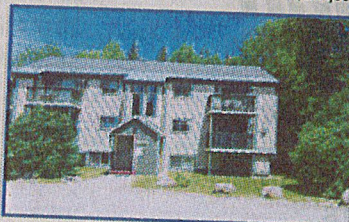


Sweet Morristown Home

This welcoming 3 bedroom, 2 bath home awaits new owners. First-floor bedroom and bath, fully insulated basement ready for additional finished space or entertaining, attached 2-car garage, and private back yard. Convenient location close to amenities.

(802) 888-1102

\$195,000

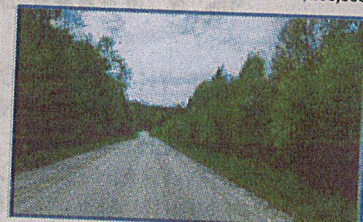


2-BR Condo in Smugglers' Notch Resort

Fully furnished 2 bedroom condo in the heart of Smugglers' Notch Resort. 56 Riverside is centrally located to the pools, restaurants, stores, Funzone 2.0 and the slopes. Smuggs rental program available with homeowner benefits.

(802) 253-1806

\$190,000



Lovely 10-Acre Lot

Great 10± acre lot with mountain views, awaiting new home or tiny house. Located on the Stowe side of Elmore Mountain Road - very close to Stowe, Morrisville and Elmore. This property offers all that is Vermont!

(802) 888-1102

\$160,000



NANCY DURAND • PENNY MASON-ANDERSON • NANCY PRITCHARD
LAUREL HOULE • CASEY GRONDIN • ANGELA LAMBERT • MONICA HEATH • BOB DURAND