



PALL SPERA COMPANY REALTORS, LLC

WWW.PALLSPERA.COM

1800 MOUNTAIN ROAD, STOWE - 802.253.9771

62 MAIN STREET, STOWE - 802.253.1806

65-5 NORTHGATE PLAZA, MORRISVILLE - 802.888.1102



Mountain Road, Stowe

Beautifully restored and meticulously maintained antique VT farmhouse, convenient to the village and Stowe Mountain Resort. Currently a 5000+ sq. ft. home and office space. Located in 'Mountain Road Crossroads' zoning - desirable setbacks and uses.

(802) 253-1806

\$990,000



Geometry in the Mountains

Multi-level 5 bedroom, 5 bath residence on 6.6+ acres with gorgeous views towards Camel's Hump. The interior features a greenhouse, elevator, indoor basketball half court, 2 laundry rooms, and an in-law suite with separate screened porch.

(802) 253-9771

\$899,000

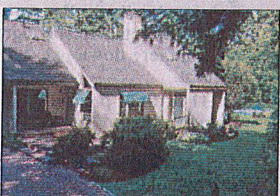


Olde Sterling Farm, Stowe

Unique gentleman's farm... 4-BR, 5-BA stone house, stable, 39± AC of pastures, woods and Sterling Brook running through. Everything is interesting: gym with solarium, hot tub, steam room, sauna and meditation bed, and a separate building with theater.

(802) 253-9771

\$890,000



Well Maintained Contemporary Cape

This 4,268± sq. ft. contemporary home is located in a wonderful, private Stowe neighborhood. Includes 5 bedrooms, an updated chef's kitchen, great room, and fireside reading area. Set on nearly 2 AC with lush perennial gardens and swimming pool.

(802) 253-9771

\$698,000



Stately Waterbury Home

Enjoy this 2± AC setting in a private neighborhood with easy access to 189. The 4-BR, 4-BA home offers a luxurious master suite, central air, chef's kitchen, great room with gas fireplace, formal dining area, billiard room, heated 3-car garage, and more.

(802) 253-1806

\$640,000



Restored Antique Farmhouse

Restored 3 bedroom antique VT farmhouse on 58± AC. 55± AC enrolled in VT's Land Use Program. Panoramic mountain & valley views! Radiant heat, exposed hand-hewn beams, refinished old growth planks & wide pine floors, Chef's kitchen, barn, garage & more.

(802) 253-1806

\$599,000



Moulton Lane, Stowe

Wonderful family or vacation residence in neighborhood section of Moulton Lane. Attractive three bedroom plus expansion with attached garage. Spacious deck for entertaining with awning. Ideal for local family or wise seasonal owner.

(802) 253-9771

\$549,000

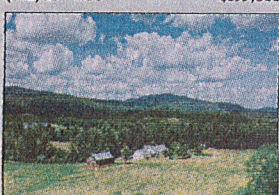


Stonybrook at Stowe

A primary or second home getaway at Stonybrook with 160± common acres, ponds, pools and tennis courts. This 3 bedroom, 4 bath unit features cathedral ceilings, fireplace, den, balcony, deck, screened porch and an unfinished walkout basement.

(802) 253-9771

\$495,000



Home on 88± Acres!

Welcome hobby farmers and privacy seekers! This property offers 88± AC and a well maintained home... 3-BR, 4-BA, an open concept floor plan, and a walkout basement. A detached garage/workshop and established gardens provide additional options.

(802) 253-1806

\$399,000

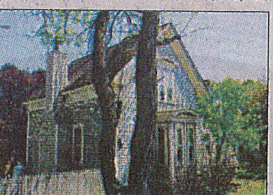


Heaven On Earth

Immaculate inside and out! Enjoy 3-BR, 3-BA, a large, open kitchen with upgraded appliances, a spacious 1st floor master suite with jacuzzi tub, and a family room which opens to a private deck. 5.4± AC setting only 10 minutes to Stowe Village.

(802) 888-1102

\$384,000



Two Homes/Price of One

A classic 0.9± AC property comprised of two homes. The 2446± sq. ft. main home has wood floors, stainless steel appliances, and a 12X16 foot deck w/ hot tub. The 1296± sq. ft. unit is currently used as a frame shop. Excellent business location.

(802) 253-9771

\$210,000



Sweet Morristown Home

This welcoming 3 bedroom, 2 bath home awaits new owners. First floor bedroom & bath, full insulated basement ready for additional finished space or entertaining, attached 2-car garage, and private back yard. Convenient location, close to amenities.

(802) 888-1102

\$195,000

LUXURY
PORTFOLIO
INTERNATIONAL



LEADING REAL ESTATE
COMPANIES OF THE WORLD





PALL SPERA COMPANY REALTORS, LLC

WWW.PALLSPERA.COM

65-5 NORTHGATE PLAZA - P.O. BOX 507

MORRISVILLE, VERMONT 05661

MAIN 802.888.1102 | TOLL FREE 877.888.4679



True Piece of Paradise

31.5± Acres of Vermont countryside, beautiful views, pasture, pond and privacy. 4 Bedroom home with lots of natural light, gorgeous kitchen, wood and tile flooring and a deck overlooking the pond. Cottage and barn are also available.

(802) 888-1102

\$475,000



Quintessential New England Farmhouse

On 15± AC, this 4-BR, 2,794± sq. ft. home offers an authentic slice of Vermont! New standing-seam roof, upgraded boiler and water heater, replaced septic system and windows, in-ground swimming pool, barn, building for maple sugaring, 2-car garage.

(802) 253-1806

\$450,000



Heaven On Earth

Immaculate inside and outside! Enjoy 3-BR, 3-BA, a large, open kitchen with upgraded appliances, a spacious 1st floor master suite with jacuzzi tub, and a family room that opens to a private deck 5.4± AC setting only 10 minutes to Stowe Village.

(802) 888-1102

\$384,000

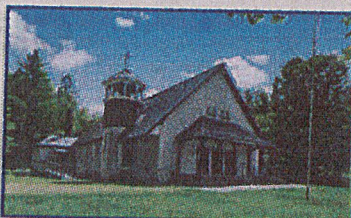


Renovated Contemporary w/Outbuildings

3-BR, 2-BA home with attached garage offers 1st floor BR and laundry, gourmet kitchen and living room with vaulted ceilings. Includes a 60x32 commercial building with offices, kitchen and bath. 10± Acre setting has a pond and mountain views!

(802) 888-1102

\$298,000



Prime Redevelopment Opportunity!

Over 8,000 sq. ft. of potential. Zoning provides great flexibility - restaurant or brewery, retail store, offices, school, apartments or a unique single-family home. 2.9± Acres with substantial on-site parking; ideal for any type of meeting space.

(802) 253-9771

\$250,000



A True Piece of Vermont

59± Surveyed acres with lovely views and stone wall boundary. Sloping land with sugar house and small sugar bush with 3,500 possible taps and frontage on 2 roads. Approximately 10 acres of open field. Woods manicured for optimal sugaring.

(802) 888-1102

\$198,500

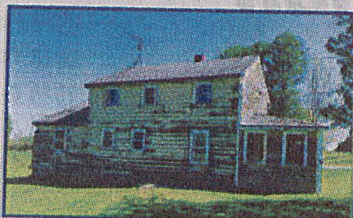


Make This Home Your Own

Enjoy the best of village living from this classic New England home with 4 bedrooms, 2 baths, private lawn and attached 2-car garage. This property has great potential for you to finish as you desire. Across from schools, fields and playgrounds!

(802) 253-1806

\$169,000

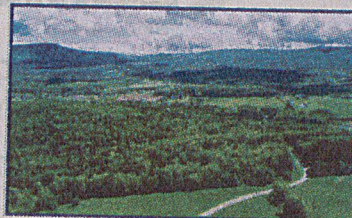


Potential!

This affordable property offers a lot of potential in a convenient Morristown location. Open-concept main floor, 4 bedrooms on the second floor and an enclosed porch front. Set on a half-acre lot with a detached 2-car garage.

(802) 888-1102

\$109,900



Country Building Lots

Four beautiful lots, ranging from 3.45± - 4.4± acres. Private setting in the valley of the Worcester Range with mountain views. Each is permitted for up to 5 or 6 bedrooms. Septic system designed. Minutes to Stowe Village or Morrisville.

(802) 253-1806

Starting at \$85,000



NANCY DURAND • PENNY MASON-ANDERSON • NANCY PRITCHARD
LAUREL HOULE • CASEY GRONDIN • ANGELA LAMBERT • MONICA HEATH • BOB DURAND