



PALL SPERA COMPANY

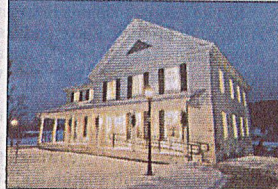
REALTORS, LLC

WWW.PALLSPERA.COM

1800 MOUNTAIN ROAD, STOWE - 802.253.9771

62 MAIN STREET, STOWE - 802.253.1806

65-5 NORTHGATE PLAZA, MORRISVILLE - 802.888.1102



Stowe Commercial Opportunity

Premier commercial building with expansion and development possibilities, excellent visibility, and mountain views. 14.8± Acres. 22 parking spaces, 3 floors of office space, elevator, town water, and septic system with 780 GPD available capacity.

(802) 253-1806

\$1,700,000

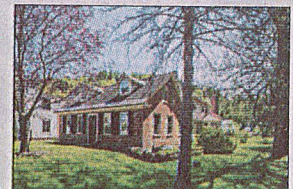


Stowe Investment Property

Spectacular commercial property in Stowe Village. Completely restored in 2000/2001 and located in the historic district, the property offers multiple uses including retail, office, or a residence. Plenty of parking. All 4 apartments are rented.

(802) 253-9771

\$1,300,000



In the Heart of Stowe Village

This classic home offers modern amenities while maintaining its original beauty and charm...original wood floors, exposed beams, floor-to-ceiling stone fireplace, and a kitchen with gourmet appliances. Just steps from shops and restaurants.

(802) 253-1806

\$925,000



Build Your Dream Home

TO BE BUILT by Gristmill Builders - 3 BR, 2 BA, 2500± sq. ft. home with high end finishes and attached 2-car garage. Beautiful 2± acre site enjoys southern exposure overlooking open fields and stunning mountain views. Minutes to I-89 and Stowe.

(802) 253-9771

\$650,000

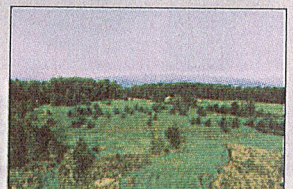


Inviting Stowe Home

A divine Moulton Lane, Stowe, home. Exceptional and private with 4 bedrooms and 2 baths. Wonderful yard and deck make for enjoyable living. New roof, generator, hardwood and tile floors and finished attached 2-car garage. An ideal choice in Stowe.

(802) 253-9771

\$469,000



Beautiful 100+ AC Land Parcel

This beautiful rural 109± acre parcel is easily accessible yet close to recreation as well as shopping and I-89. Mountain views, fields, woodlands - also ideal as a horse farm. Adjacent to extensive state hiking areas. Development potential.

(802) 253-9771

\$375,000



Lakeside Home, Elmore

This quiet, year-round lakeside home has 3 bedrooms, 2 baths, upgraded finishes, abundant natural light, plus plenty of space and privacy. The large deck and private dock provide opportunities for recreation and relaxation. Steady rental history.

(802) 253-1806

\$375,000



Mill Village, Morristown

This to-be-built bungalow-style ranch offers a single level open floor plan with 3 bedrooms and 2 full baths on 1.9± acres. Developer/Builder will customize to suit. Conveniently located just outside the village in a quiet newer subdivision.

(802) 253-9771

\$289,000

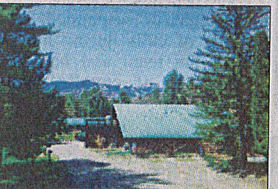


Charming Cape

3 Bedroom, 2 bath home on 1+ acre. Lots of living space...large eat-in kitchen, wood stoves in both formal dining area and family room, plus a newly renovated sunroom. A 3-season porch, large deck and attached 2-car garage complete the property.

(802) 888-1102

\$275,000

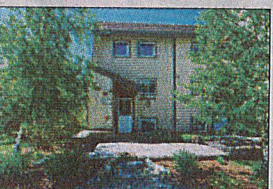


Condo on the Mountain Road

3 Bedroom, 2 bath condominium on the Mountain Road in Stowe. Nice kitchen and a large open living/dining area. Easy access to the ski resort and Stowe Village. Reasonable HOA fees. Pool access available at neighboring Northern Lights Resort.

(802) 253-9771

\$225,000

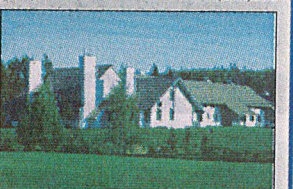


Turn-Key Smuggs Condo

Very well maintained and updated 4-BR, 3-BA, end unit in the Village West section of Smugglers' Notch Resort - prime location to the Funzone 2.0, pools, tennis courts, playgrounds, and more! Plenty of room for all in this 3-level condo.

(802) 253-1806

\$225,000



Village Green at Stowe Quartershare

Own 13 weeks/year on a rotating basis at Village Green. Amenities incl. indoor and outdoor pools, tennis courts, common bldg with game room, sauna, hot tub, on-site maintenance and management. Near shops, restaurants, golf, and skiing.

(802) 253-9771

\$5,000

LUXURY
PORTFOLIO
INTERNATIONAL



LEADING REAL ESTATE
COMPANIES OF THE WORLD





PALL SPERA COMPANY

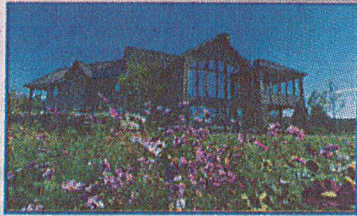
REALTORS, LLC

WWW.PALLSPERA.COM

65-5 NORTHGATE PLAZA - P.O. BOX 507

MORRISVILLE, VERMONT 05661

MAIN 802.888.1102 | TOLL FREE 877.888.4679



Spectacular Northeast Kingdom Estate

Extraordinary private enclave in the hills of the Northeast Kingdom...the exceptional 8,200± sq. ft. home is set atop a knoll with 360° mountain views and surrounded by 287± acres of open meadows and woodlands. Easily accessible from I-91.

(802) 253-9771

\$3,100,000



Vermont Farm Estate

Magnificent 356± acre country estate nestled against state and town forests at the base of the Worcester Range. 4-BR, 3-BA, 3,873± sq. ft., incredible barn, open meadows, and forest land. Approx. 7 miles to Montpelier, 5 miles to I-89 and ski areas.

(802) 253-9771

\$1,100,000

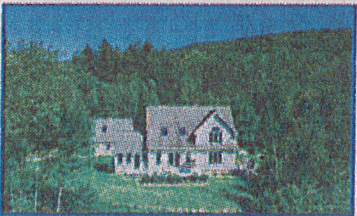


Lakeside Living at its Finest

Wonderful 3 bedroom cottage on Lake Caspian with 116± feet of sandy shoreline, expansive lawn area and plenty of parking. Fabulous porch for entertaining and enjoying beautiful lake views. Close to public beach, Willey's Store, and Highland Lodge!

(802) 888-1102

\$715,000

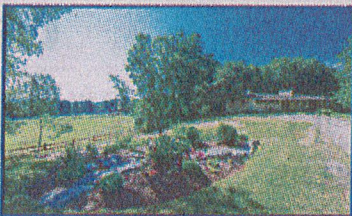


Desirable Elmore Location

Beautiful post & beam offered fully furnished and equipped! Open concept living on the 1st floor with plenty of natural light, and extra space in the full walk-out basement. On 6± AC with pond and Mt. Mansfield views, near Stowe and Morrisville.

(802) 253-1806

\$495,000



Montpelier Gem

Overlook a century-old farm from this well maintained 3-BR, 2-BA home. Wonderful living space...enjoy fireplaces in the great room and family room and a finished lower level. Gracious yard with beautiful gardens on a prestigious corner lot.

(802) 253-9771

\$395,000

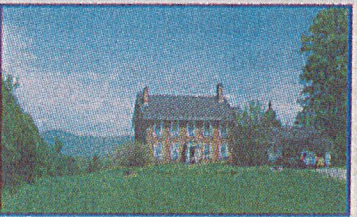


Spacious and Private

Fresh paint - new price! Spacious 3-BR, 3-BA home boasts a large mudroom, open kitchen/dining area, custom cabinetry, and more! Set on 12± private acres (abuts State land) with great views, pool, and landscaped grounds. Close to amenities.

(802) 253-1806

\$390,000



Lovingly Renovated

Classic brick farmhouse, circa 1830, in a private 2.2± acre setting with views of the Green Mountains. 4 Bedrooms, 3 baths, twin fireplaces in the dining room and living room, great room with wood stove, cathedral ceiling, and exposed beams.

(802) 888-1102

\$316,000



Private Cedar Log Home

Reconnect with nature in this private home with pond and waterfall on 25± acres. Home offers abundant natural light, main floor master with large walk-in closet, cozy loft, finished basement, and 2-bay garage with large workshop & storage.

(802) 888-1102

\$268,500



Carpenter's Dream

This sweet little house on 0.2± acres is in need of renovations. Some great built-ins, hard wood floors, two screened porches, concrete basement, newer roof, furnace and hot water system, mostly vinyl siding and metal roof, plus a garage.

(802) 888-1102

\$100,000



NANCY DURAND • PENNY MASON-ANDERSON • NANCY PRITCHARD
LAUREL HOULE • CASEY GRONDIN • ANGELA LAMBERT • MONICA HEATH • BOB DURAND