



PALL SPERA COMPANY

REALTORS, LLC

WWW.PALLSPERA.COM

1800 MOUNTAIN ROAD, STOWE - 802.253.9771

62 MAIN STREET, STOWE - 802.253.1806

65 S NORTHGATE PLAZA, MORRISVILLE - 802.888.1102



The Stowe Inn

A classic Vermont Inn, located just across from Stowe's revitalized Main Street. 38 Guest accommodations between the 1850s Inn building and the Carriage House. The Inn hosts a 100+ seat bar/restaurant with porch. Set on 4+ acres with an in-ground pool.

(802) 253-9771

\$2,450,000



The Essence of Vermont Country Living

This 522.9+ acre VT homestead is fully self-sufficient and off-the-grid. The 2,496+ sq. ft. log cabin has 4 BR and 3 BA. 6,000 Maples are currently tapped, with potential for thousands more. Enjoy trails, brooks, waterfalls and mountain views!

(802) 253-1806

\$2,200,000



Stewart Farm

This flat 13.6+ acre parcel, with beautiful views, abuts Copley Hospital/Copley Campus on the west side and Copley Country Club along the north side. Situated in Morrisville's SUD (Special Use District), with town water and sewer.

(802) 253-1806

\$1,442,000



Beautiful Modern Design

This 'like new' 4-BR contemporary home offers a sleek, modern design with clean lines, solid construction, quality finishes, pristine oak floors, tiled baths and a great location between Stowe Village and the mountain. Offered furnished and equipped.

(802) 253-1806

\$1,150,000



Bonaventure - Morristown

Exquisite country estate on 11.64+ acres, comprised of a 3 bedroom, 3.5 bath main house, a 3-bay garage with apartment and a 20x40 swimming pool. The Ten Bends community offers excellent fishing, overlooking waterways and mountain vistas.

(802) 253-9771

\$895,000



Ski In/Ski Out

Renovated, turnkey 3 bedroom and 3 bath townhouse at Stowe Mountain Resort! Upgrades include a new kitchen, wet bar, bathrooms, basement bedroom, AC, furnace and fireplace. Offered furnished with exceptions. Just minutes from the Toll House lift.

(802) 253-9771

\$600,000

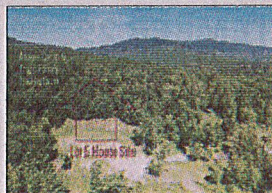


Desirable Elmore Location

Beautiful post & beam offered fully furnished and equipped! Open-concept living on the 1st floor with plenty of natural light and extra space in the full walk-out basement. On 6+ acres with pond and Mt. Mansfield views, near Stowe and Morrisville.

(802) 253-1806

\$495,000



Twin Brooks at Majestic Heights

On a ridge between two mountain streams and with the back border adjoining the Von Trapp cross-country trails, this 10.12+ acre parcel awaits your new home. Panoramic views from north to south. Convenient to Stowe Village and skiing at Stowe Mountain Resort.

(802) 253-9771

\$485,000

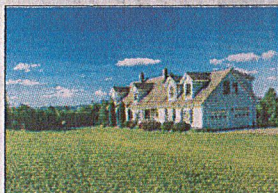


Unique Barnet Property

Spectacular 1875 post & beam barn, moved to a 27+ acre hilltop setting and converted to a 4-BR residence. Open-plan 1st floor with granite kitchen, exposed beams, walk-out basement, multiple heating options and panoramic views. Just 8 minutes off I-91!

(802) 253-9771

\$469,000



Peaceful Setting In Wolcott

Well-maintained 4-BR, 4-BA home in an 11.4+ acre setting with mountain views! Oak floors, gas fireplace, screened porch, and attached 2-car garage. In-law studio with private entrance on lower level. New boiler, oil tank and hot water heater in 2012.

(802) 253-9771

\$465,000



Excellent Visibility

2,400+ Square foot commercial/residential building on 1.3+ acres. Formerly a vet's office on the main level with a 2 bedroom residential apartment on the second level. Could be converted to solely residential use. Highly visible Hyde Park location.

(802) 253-9771

\$395,000



Location! Location!

Located between Stowe and Morrisville, this spacious cape, built in 1995, offers a good flow and great functionality... 4 bedrooms, 2 baths, mudroom, covered porch and an attached 2-car garage. A home that can fit many lifestyles.

(802) 253-9771

\$224,999

LUXURY
PORTFOLIO
INTERNATIONAL



LEADING REAL ESTATE
COMPANIES OF THE WORLD

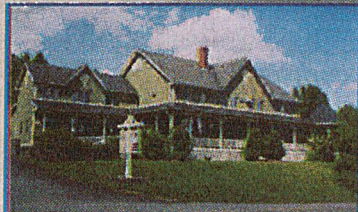


PALL SPERA COMPANY REALTORS, LLC

65-5 NORTHGATE PLAZA - P.O. BOX 507

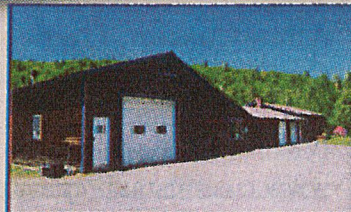
MORRISVILLE, VERMONT 05661

MAIN 802.888.1102 | TOLL FREE 877.888.4679



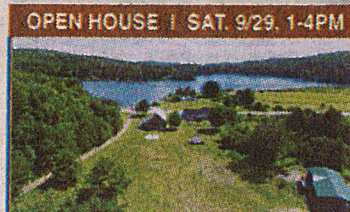
Willoughvale Inn

The Willoughvale Inn, Unit #9, at the Willoughvale Inn and Cottages Condominiums. An 11-room inn with suites, dining facilities, overlooking beautiful Lake Willoughby in northern Vermont. Consider for a B&B, family or corporate retreat.
(802) 253-9771 \$600,000



Home & Commercial Businesses

A property with many unique attributes... tastefully updated 3-BR, 2-BA home, 15.8± acres, in-ground swimming pool, and landscaped yard. Presently accommodating 2 businesses with 42X50 business area and garage with two 10' overhead doors.
(802) 253-9771 \$495,000



OPEN HOUSE | SAT. 9/29. 1-4PM

976 VT RT 14, Woodbury

This ornate 3-BR, 3-BA home boasts built-ins, handpainted stained-glass transoms, main floor master BR, formal dining room, gourmet kitchen, library, and living room with wood stove. On 3.8± acres with a huge barn, overlooking Woodbury Lake.
(802) 888-1102 \$485,000



Charming Morristown Cottage

Custom built cottage on 10.26± private AC in the "Ten Bends" community, offering 300± AC of protected common acreage. Many opportunities for outdoor recreation including trails, famous fishing spots, and kayaking or river rafting down the Lamolle.
(802) 253-9771 \$279,000



Beautiful Property

Enjoy one level living in this lovely 3-BR, 2-BA home on 2.29± AC. Features include hardwood floors in the kitchen and living room, a covered porch, master bedroom with bath, and an attached 2-car garage. Close to Stowe and Morrisville amenities.
(802) 888-1102 \$269,000



Country Living in Waterville!

Charming, newly renovated 1850's colonial home on 3± acres with mountain views, comprised of a 3-BR, 2 full BA home and a 2-BR, 1.5-BA in-law apartment. Enjoy the exposed beams and open living spaces, plus a deck with access to the level yard.
(802) 253-1806 \$250,000



Private Yet Close to Stowe

This beautiful 14.95± acre lot is permitted for a 5 bedroom residence with views across a stream to Mt. Mansfield and Sterling Mountain Range, and possible pond site. Very private but with easy access to Stowe Village and Mt. Mansfield.
(802) 253-9771 \$195,000



Sweet Country Lot

3.2± Acres in a sought after neighborhood. Power at road, surveyed and ready to go! Very close to the Elmore/Stowe line and minutes to Rte. 100. Enjoy nature from this quiet and private cul-de-sac location. Vermont at its best!
(802) 888-1102 \$50,000



Sunny Building Lot

Sunny and mostly level building lot with private access off of Brookview Lane - located only a mile from Lake Elmore. Septic design in place for a 3-bedroom sub-surface leach-field and private well.
(802) 253-1806 \$37,500



NANCY DURAND • PENNY MASON-ANDERSON • NANCY FRITCHARD
LAUREL HOULE • CASEY GRONDIN • ANGELA LAMBERT • MONICA HEATH • BOB DURAND