



PALL SPERA COMPANY

REALTORS, LLC

WWW.PALLSPERA.COM

1800 MOUNTAIN ROAD, STOWE - 802.253.9771

62 MAIN STREET, STOWE - 802.253.1806

65 S NORTHGATE PLAZA, MORRISVILLE - 802.888.1102



Guaranteed Privacy In Stowe

Furnished chalet-style home in a desirable neighborhood near Stowe Mountain Resort and other outdoor pursuits. The 4-BR home has floor-to-ceiling windows, wood-burning fireplace and sauna. Owners may use Notchbrook's pool and tennis courts.

(802) 253-1806

\$995,000

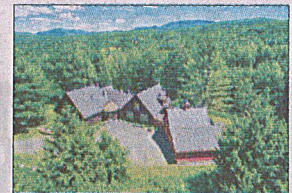


Award-Winning "Raven Beach"

An elegantly handcrafted home nestled thoughtfully into its lush 10.7± acre landscape, with mature gardens and mountain views... Every inch of this classic 2,300± sq. ft. contemporary, rebuilt in 2012, bears the creative stamp of its designer owners.

(802) 253-1806

\$950,000

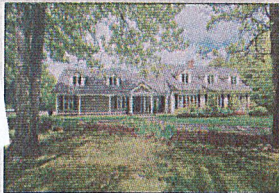


The Cabin in the Woods

Spectacular Stowe residence set upon 20+ private acres with a 2± AC pond. The 4-BR home features wood floors, stone fireplace, beamed ceilings, gourmet kitchen, granite counter tops, butler's pantry, patio, covered porch and an attached 3-car garage.

(802) 253-9771

\$899,000



Weeks Hill Estate

Remodeled 5-BR cape with a bright and comfortable floor plan featuring a living room with 2 seating areas, a classic brick fireplace and a finished lower level. A stocked pond completes the idyllic 3.6± AC setting. Minutes from skiing and Stowe Village.

(802) 253-9771

\$690,000



Spacious Stonybrook Condominium

One of the largest condominiums in the desirable enclave of Stonybrook, this unit is slightly over 4,000 square feet with 5 bedrooms and 5 bathrooms, and is offered furnished. Convenient location, surrounded by 160 acres of woods, ponds and trails.

(802) 253-9771

\$499,000



Ideally Located Stowe Home

Fall in love with this charming 3-BR, 2-BA cape! This well-maintained home exudes warmth and comfort, featuring an upscale kitchen, birch floors and a wood-burning fireplace. Private outdoor spaces, views and a 40 x 32 hobby barn enhance the property.

(802) 253-1806

\$469,000



Furnished Stowellake Condominium

Well-maintained 3-BR, 3-BA condo with fresh paint and lock-off option. Enjoy access to Stowellake Spa, pool, tennis and more - plus the Stowe Rec Path and trolley stop are just steps away. Rain or shine, there is always something to do here!

(802) 253-1806

\$390,000

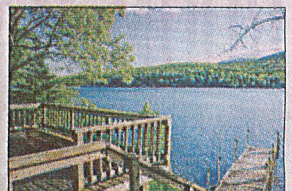


Opportunities Abound

This newly remodeled 3 bedroom, 2 bath home would make the perfect home for your family or a conveniently located vacation home as it is just over the Stowe town line. 3.69± Acres with gardens and a great backyard! Just minutes to downtown Stowe.

(802) 253-9771

\$329,000

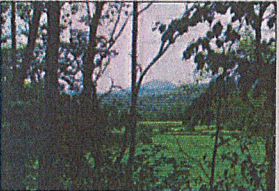


Lakefront Home

4 Bedroom, 2 bath camp on Lake Elmore with 108 feet of lakefront. Features 2 decks, pine floors, wood-burning stove and propane wall heater. Set on a 0.41± acre lot with a portable dock, detached garage and gorgeous views!

(802) 253-9771

\$299,000



Land In Stowe's Lower Village

13.8± Acres of land with frontage on Route 100 in Stowe's Lower Village and on River Road. Excellent visibility with great views of the Little River and Camel's Hump! Potential for the development of 8 residential units and additional commercial space.

(802) 253-1806

\$299,000

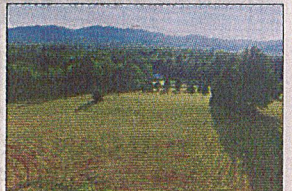


Charming Morristown Cottage

Custom-built cottage on 10.26± private AC in the "Ten Bends" community, offering 300± AC of protected common acreage. Opportunities for outdoor recreation, including trails, famous fishing spots and kayaking or river rafting down the Lamolle.

(802) 253-9771

\$279,000



5 Acres In Waterbury Center

Beautiful open field with views of the Worcester Range. Gently sloping 5± AC in a desirable and easily accessible location. Permitted for a 4-BR home. Lovely southeasterly exposure. Ideal for horses. Above-ground electrical lines will be buried.

(802) 253-9771

\$145,000

LUXURY
PORTFOLIO
INTERNATIONAL



LEADING REAL ESTATE
COMPANIES OF THE WORLD



REAL ESTATE SALES, AUCTIONS AND RENTALS



**PALL SPERA
COMPANY**
REALTORS, LLC

WWW.PALLSPERA.COM

65-5 NORTHGATE PLAZA - P.O. BOX 507

MORRISVILLE, VERMONT 05661

MAIN 802.888.1102 | TOLL FREE 877.888.4679



Award-Winning "Raven Beach"

An elegantly handcrafted home nestled thoughtfully into its lush 10.7± acre landscape, with mature gardens and mountain views... Every inch of this classic 2,300± sq. ft. contemporary, rebuilt in 2012, bears the creative stamp of its designer owners.

(802) 253-1806

\$950,000



1860 School House

Amazing 121± AC property with well maintained 2-BR, 2-BA 1800's school house. Home has abundant natural light and a lot of character, plus an attached 2-car garage and an oversized garage/workshop. Beautiful setting with meadows and woods.

(802) 888-1102

\$629,000



Large Commercial Village Lot

18.2± Acre commercial lot in North Hyde Park Village. Commercial zoning, subdividable, 3-phase power, town water. There are 5 sawmill buildings and lumber sheds - in great condition - which Seller will remove or leave at Buyer's preference.

(802) 253-1806

\$585,000



Black River Farm, Craftsbury

Privacy, mountain and water views, lovely gardens, fruit trees, and 35.5± acres of open meadows and woods! This 3 bedroom, 2 bath home has 1,916± sq. ft. of living area, a private deck, and access rights to the Black River.

(802) 888-1102

\$450,000



Opportunities Aboard

This newly remodeled 3 bedroom, 2 bath residence would make the perfect home for your family or an ideal vacation home. 3.69± Acres with gardens and a great backyard! Conveniently located in Morristown and just minutes to downtown Stowe.

(802) 253-9771

\$329,000



Stylish Contemporary Home

Home offers 3 bedrooms, 3 baths, office space, gourmet kitchen with island, large pantry, and dining area. Sun room with back deck. Huge living area with cathedral ceilings, skylights, catwalk, wood floors. 13X23 Outbuilding and mountain views!

(802) 888-1102

\$289,500



Smugglers' Notch Resort Condo

Welcome to this 3-BR, 2-BA, Poolside condo at Smugglers' Notch Resort - an end unit situated in Village West. Fully updated and beautifully furnished with one of the best views in the resort, plus fabulous amenities just outside your door!

(802) 253-1806

\$230,000



Make This Home Your Own!

Enjoy the best of village living from this classic New England home with 4 bedrooms, 2 baths, private lawn and attached 2-car garage. This property has great potential for you to finish as you desire. Across from schools, fields and playgrounds!

(802) 253-1806

\$169,000



Sweet 2-Acre Lot

2± Acre lot on Elmore Pond Road, just 2 miles to Elmore village and the lake, 30 minutes to Montpelier, Morrisville, and Stowe just 5-15 minutes away! Power is at the road and septic plans are available. This one won't last long!

(802) 888-1102

\$40,000



NANCY DURAND • PENNY MASON-ANDERSON • NANCY PRITCHARD
LAUREL HOULE • CASEY GRONDIN • ANGELA LAMBERT • MONICA HEATH • BOB DURAND