

[Check Availability](#) | [Book It](#) | [Contact Us](#)

[Home](#) | [Accommodations](#) | [Rates & Specials](#) | [Dining](#) | [Events at the Inn](#) | [Recreation](#) | [About the Inn](#)

Winter Recreation at WilloughVale Inn

With so much to see and do here, you need more than just a day or two to explore the Northeast Kingdom. Visit the [Northeast Kingdom Travel & Tourism Association Events](#) and begin planning your adventures.

Snowmobiling in Vermont is a North Country experience not to be missed!

For more than 40 years, a remarkable network of over 5,000 miles of groomed and connector trails has wound its way through our beautiful state. The V.A.S.T. (Vermont Association of Snow Travelers), composed of local clubs and over 120 groomers, maintains a vast network of groomed trails for riders to enjoy. Community clubs offer events every weekend to add to the fun. The Northeast Kingdom has long been a major hub for snowmobiling. A trail leading to Island Pond, Vermont's Snowmobile Capital, is located just outside the Inn's door!



Rentals: All Around Power - 800-748-1413

A typical snowmobile season in Vermont starts in the middle of December depending on conditions. Take a guided tour from an area snowmobile operator, or ride on the V.A.S.T. trail network. To do so, you must purchase a V.A.S.T. trail pass for your legally registered snowmobile through a local club - and you're on your way! For further information on purchasing a pass and rules for the trail, visit [VTVAST.org](#), or buy through the local club at [OrleansSnowStormers.com](#). Be sure to ask about our V.A.S.T. Member Discounts - offered all season long!

Further information: Vermont Association of Snow Travelers (V.A.S.T.) - Phone: 802-229-0005 or visit [VTVast.org](#) for trail maps and further information.



Sleigh Rides

An extremely popular diversion in winter, a horse-drawn sleigh ride is the perfect way to experience the beauty of our pristine landscape. You will stay warm and toasty with blankets and a warm drink on this exhilarating adventure!

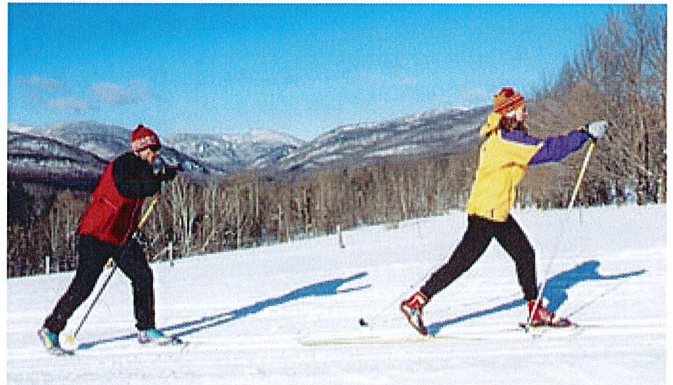
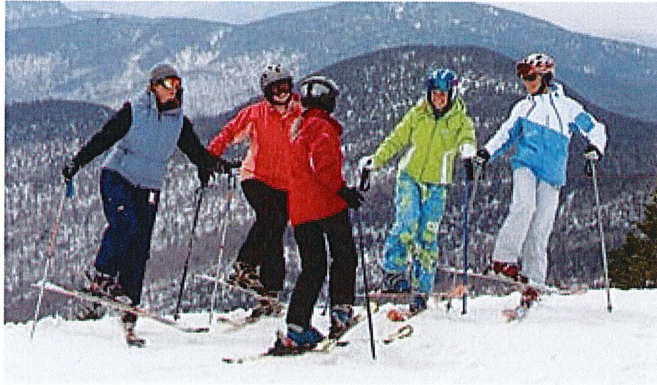
Further information:
Perry Farm in Brownington - 802-754-2396.

Sled Dog Tours

For the ultimate winter adventure, take a sled dog tour! You will be truly awed by the power, sense of camaraderie and teamwork of the sled dog. Ride for one hour intervals or plan a full day excursion. You will surely take home memories of a lifetime of your time spent in the backcountry with this captivating dog team!

Further information:

Eden Dog Sledding - 802-635-9070



Downhill Skiing

Two renowned resorts are both a reasonable drive from Lake Willoughby. The Burke Mountain Resort, a 25 minute drive from the Inn, offers a classic New England ski experience with excellent trails and a "down home" casual atmosphere. Jay Peak Resort, approximately 40 minutes to the northwest, is a European style resort boasting the highest number of "powder days" in Vermont. Enjoy the view from the tram as you ride to the 360 degree summit! Lessons and rentals are available at both resorts.

Q Burke Mountain Resort: 802-626-7300 or visit SkiBurke.com

Jay Peak Resort: 800-451-4449, 802-988-2611 or visit JayPeakResort.com

Cross Country Skiing & Snowshoeing

From pristine backcountry woodland trails and snow-covered fields to exceptional cross-country ski centers with expertly groomed terrain, you will surely enjoy the best that The Northeast Kingdom winter has to offer.

Insider's Tip: Enjoy the peace and serenity of the Westmore Wilderness Trails, located at the south end of the lake. The Inn has two pairs of Tubbs Snowshoes for guest use, free of charge, based on availability. For the hearty is a snowshoe trek up Pisgah Mountain.

Burke Mountain Cross Country Ski Center - About 25 minutes from the Inn, ski touring enthusiasts will enjoy some of the prettiest and least tamed wilderness and hillsides to be found anywhere. 80 km of terrain are offered, with loops that range from 1-12 km for skiers of every ability level. Phone: 802-786-8338 or visit SkiBurke.com.

Craftsbury Outdoor Center - Craftsbury, a quaint, quintessential New England village boasting a historic General Store, is approximately 30 minutes from the Inn. Phone: 802-586-7767 or 800-729-7751 or visit Craftsbury.com.

The Kingdom Trails Association - a 100-mile trail network (Vermont's largest recreation trail system) that is ideal for cross-country skiing and snowshoeing – Visit KingdomTrails.org for further information.

East Burke Sports (Rentals) - will help outfit you with the latest and greatest gear needed for downhill skiing, cross-country skiing, snowshoeing, paddling, cycling and more. Located in East Burke, just a mile

NORTHEAST V.T. & NORTHERN N.H.

WINTER GUIDE!

FREE

The ultimate guide to
why winter rules Northern
New Hampshire and
Vermont's Northeast
Kingdom!

2017-2018

REAL THRILLS. DISCOVER WORLD CLASS ICE CLIMBING

BY LEAH CAREY
Staff Writer

According to John Kascenska of Kingdom Adventures Mountain Guides in East Burke, the Northeast Kingdom and White Mountains host some of the best ice climbing available.

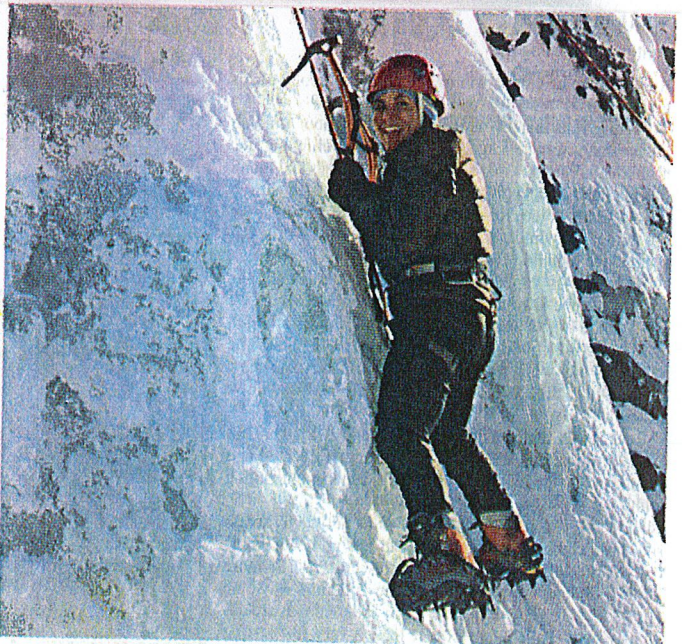
"Lake Willoughby is considered one of the premiere ice climbing locations in the entire country," he said. "We are lucky. We have a beautiful resource here in all sea-

sons - great rock climbing, wonderful ice climbing, downhill skiing, back country skiing, mountain biking."

Until a couple years ago, you could find Kascenska on the campus of Lyndon State College looking every bit an academic dean and professor. But now he's retired from academia and you may need to look higher to find him - specifically, to the top of the nearest cliff.

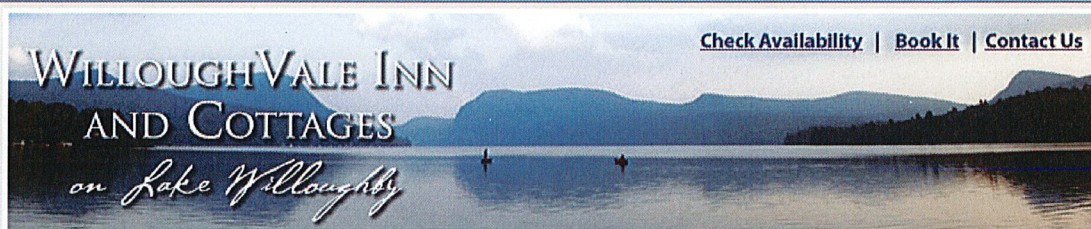
"I have a great interest in mountaineering and going into high places," he said.

Climbing continues on 40



An ice climber takes on a pitch while climbing with John Kascenska of Kingdom Adventures Mountain Guides.

COURTESY PHOTO

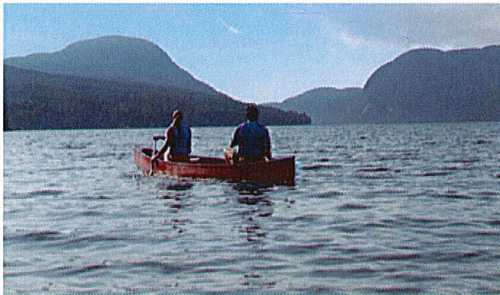

[Check Availability](#) | [Book It](#) | [Contact Us](#)
[Home](#) | [Accommodations](#) | [Rates & Specials](#) | [Dining](#) | [Events at the Inn](#) | [Recreation](#) | [About the Inn](#)

Spring, Summer & Fall Recreation at Willoughvale Inn

With so much to see and do here, you need more than just a day or two to explore the Northeast Kingdom. Visit the Northeast Kingdom Travel & Tourism Association Events and begin planning your adventures.

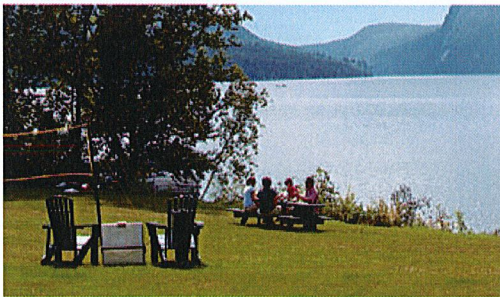
Enjoy our Lakefront Location

Head out on the lake with one of our canoes or kayaks! Our Waterfront Activity Area makes lakeside fun easy! A playground for kids... a fire pit for toasting marshmallows... and lounge chairs to settle into and soak up the sun. Relax on our dock, swim out to our Rave water trampoline or play badminton by the water.



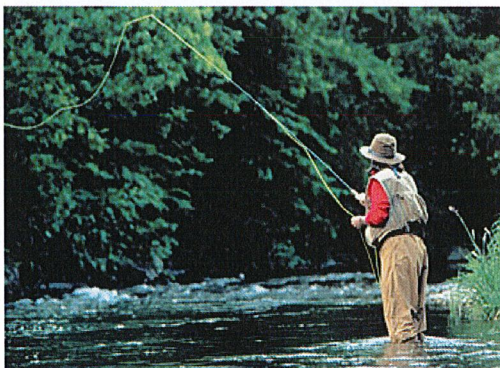
Swimming

The Inn offers a premier location on the shores of Lake Willoughby - renowned for its crystal-clear waters. Guests may swim right from our shores, or opt to visit the public beaches on the north or south ends of the lake. For further exploration many secluded swimming holes offer an exhilarating experience for visitors and locals alike. Insider's Tip: Take a plunge off "Devil's Rock" or flip from the rope swing at a the South End beaches of Lake Willoughby - fun for all ages!



More Inn Activities

There are two bicycles at the Inn available for guests to enjoy touring around the lake. The Inn has a game room which includes Air Hockey, a pool table and ping pong. Also a large selection of DVD's are available for guest's to rent when it's time to relax.



Scuba Diving

Fishing

In 2003, Shawn Dutil caught a 35 lb, 3.2 oz trout from Lake Willoughby (the Vermont State record). It is no wonder that the area is a mecca for fishing year-round! The pristine waters of Lake Willoughby (up to 300' deep in spots) and the many area streams and ponds are home to many species. Expect to net large trout, salmon, muskellunge and more! Insider's Tip: The Willoughby River is also a "hot spot" for fly-fishing trout. The Barton and Black Rivers are good spots as well and the Clyde River which has an outstanding run of landlocked Atlantic salmon.

Fishing Licenses/Bait & Tackle:

The Evansville Store offers all that is needed to

As a glacial cut lake, Lake Willoughby's cold waters run very deep, making it a unique diving experience.

Willoughby Divers - offer air fills and some rental gear. For special diving arrangements contact Tharon Faulkner at 802-467-3104.

get you out fishing, including Vermont licenses - the cost for adults (18+ yrs) is \$22.00 for residents and \$45.00 for non-residents; youths (15-17 yrs) are \$8.00 for residents and \$15 for non-residents. Children younger than 15 years fish for free. Fishing licenses may also be purchased online through the [Vermont Fish & Wildlife Department](#).

Canoeing & Kayaking

With 37,575 acres of public lakes and ponds, 3,840 miles of rivers and streams and 50 public boat launches, the area is renowned for flat and high water paddling. **Innsider's Tip:** Take a moonlit canoe or kayak trip to experience the wonderment of the mountains reflected on the lake surface. Be sure there is ample moonlight and paddle close to shore!

Canoe/Kayak Rentals:

The WilloughVale Inn has 1 double kayak, 2 single kayaks and 4 canoes available first-come/first served at no charge with a 2 hr limit.

East Burke Sports - Rents canoes and kayaks for \$30 for a full day (starting at 9am) or \$20 for a half day (starting at 1pm). Call 802-626-3215.



Cruises

The **Northern Star** offers cruises and private charters from mid-May through mid-October on Lake Memphremagog in Newport, Vermont. 802-487-0234

Hiking

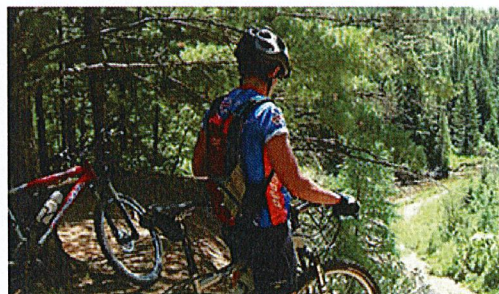
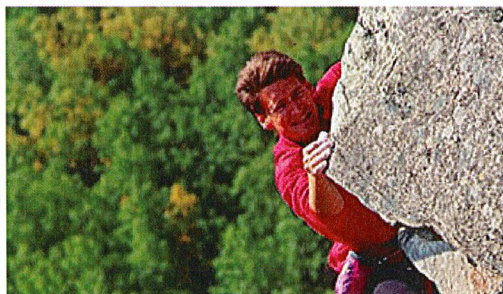
The Northeast Kingdom offers spectacular opportunities for adventures on foot! From rambling walks through the woods to challenging trails to mountain peaks - there are options for all abilities, many around Lake Willoughby - and all interesting! En route, you will be blessed with the opportunity to view the area's abundant wildlife - including over 100 bird species and beautiful flora and fauna. We've highlighted a few popular excursions...

- Mt. Pisgah & Mt. Hor - the famous cliffs that tower over Lake Willoughby
- Wheeler Mountain
- Bald Mountain
- Burke Mountain - a new trail system provides solitude and miles of hiking. Contact **East Burke Sports** for more information.

Innsider's Tip: Pack a picnic and hike to the fire tower atop Bald Mountain, offering an incredible 360-degree view! Of course, don't miss a hike up Mt. Pisgah - look for the rare arctic plants that make their home on the rocky walls carved by the glacier, and try to spot the nests of the Peregrine falcons who make their home here.

Rock Climbing

Having been featured on the cover of Rock & Ice Magazine and Vermont Life Magazine, the famed cliffs of Mt. Pisgah and Mt. Hor offer one of the most renowned climbing experiences in the Northeast. Comprised of fractured granite, the famous cliffs rise almost 300 feet high over Lake Willoughby.



Mountain & Trail Biking

The Vermont Northeast Kingdom and Lake Willoughby offer mountains and lakeside trails that will challenge and deliver you the ride of a lifetime. The vast wilderness area is perfect for superb off road biking! Willoughby State Park, Crystal Lake Ledges, Big Falls, Wheeler Mountain and Bubbling Springs have abundant trail biking areas. The [Northeastern Vermont Development Association](#) provides extraordinary guide maps and tips on their website.

Road Biking - t

The Northeast Kingdom is a vast wilderness area with relatively uncrowded roads for superb road biking! A