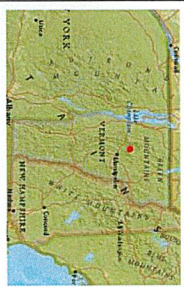




149.0  
0 74.00 149.0 Meters  
WGS 1984, Web Mercator Auxiliary Sphere  
© Vermont Agency of Natural Resources, January 30, 2023

DISCLAIMER: This map is for general reference only. Data layers that appear on this map may or may not be accurate, current, or otherwise reliable. ANR and the State of Vermont make no representations of any kind, including but not limited to, the warranties of merchantability, or fitness for a particular use, nor are any such warranties to be implied with respect to the data on this map. THIS MAP IS NOT TO BE USED FOR NAVIGATION



**LEGEND**

- ☐ Parcels (Standardized)
- Roads**
  - Interstate
  - US Highway 1
  - State Highway
  - Town Highway (Class 1)
  - Town Highway (Class 2,3)
  - Town Highway (Class 4)
  - State Forest Trail
  - National Forest Trail
  - Legal Trail
  - Private Road/Driveway
  - Proposed Roads
- ☐ Town Boundary

**1: 2,927**  
1in = 244 ft.  
1cm = 29 meters



**NOTES**

Map created using ANR's Natural Resources Atlas



"THE SUBDIVISION REGULATIONS OF THE TOWN AND VILLAGE ARE A PART OF THIS PLAT AND APPROVAL OF THIS PLAT IS CONSIDERED AS COMPLETION OF ALL THE REQUIREMENTS OF SAID SUBDIVISION REGULATIONS, EXCEPT ONLY ANY VARIANCES OR MODIFICATIONS MADE IN WRITING BY THE COMMISSION AND ATTACHED HERETO." [SECTION 6B2 - SUBDIVISION REGULATIONS]

APPROVED BY: Robert W. Frey  
CHAIRMAN PLANNING COMMISSION

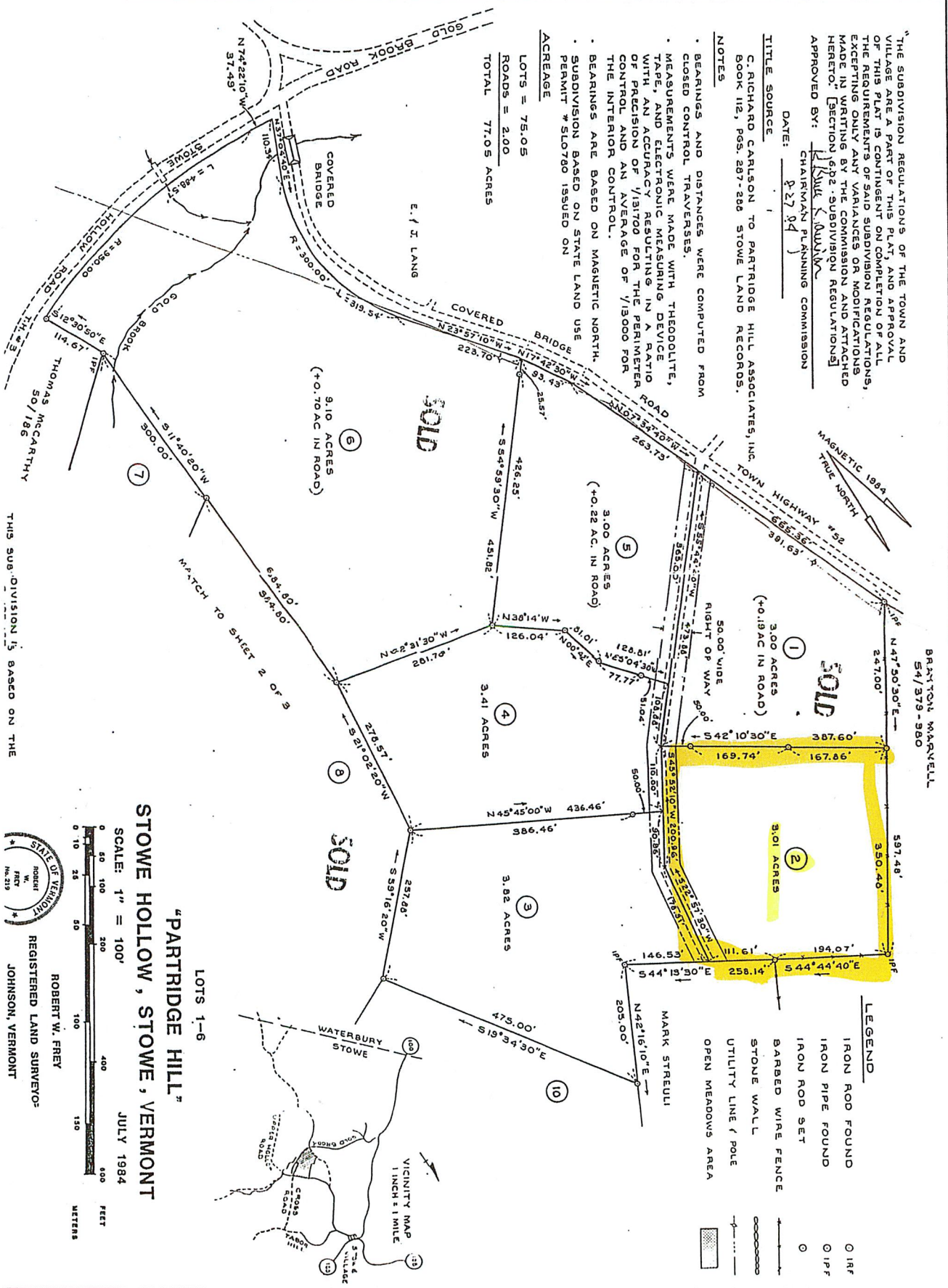
DATE: 8/27/84

TITLE SOURCE  
C. RICHARD CARLSON TO PARTRIDGE HILL ASSOCIATES, INC.  
BOOK 112, PGS. 287-288 STOWE LAND RECORDS.

#### NOTES

- BEARINGS AND DISTANCES WERE COMPUTED FROM CLOSED CONTROL TRAVERSES.
- MEASUREMENTS WERE MADE WITH THEODOLITE, TAPE AND ELECTRONIC MEASURING DEVICE WITH AN ACCURACY RESULTING IN A RATIO OF PRECISION OF 1/13100 FOR THE PERIMETER CONTROL AND AN AVERAGE OF 1/13000 FOR THE INTERIOR CONTROL.
- BEARINGS ARE BASED ON MAGNETIC NORTH.
- SUBDIVISION BASED ON STATE LAND USE PERMIT # SLO760 ISSUED ON

ACREAGE  
LOTS = 75.05  
ROADS = 2.00  
TOTAL 77.05 ACRES



THIS SUBDIVISION IS BASED ON THE



ROBERT W. FREY  
REGISTERED LAND SURVEYOR  
JOHNSON, VERMONT

SCALE: 1" = 100'  
JULY 1984  
FEET  
METERS

STOWE HOLLOW, STOWE, VERMONT

"PARTRIDGE HILL"

LOTS 1-6

NOTES  
EXISTING LIDAR CONTOURS BASED ON INFORMATION  
TAKEN FROM THE VERMONT CENTER FOR GEOGRAPHIC  
INFORMATION (VCGI) AND WERE NOT SURVEYED BY THIS  
OFFICE.

PROPERTY LINES SHOWN ARE APPROXIMATE ONLY BASED ON INFORMATION TAKEN FROM THE VERMONT CENTER FOR GEOGRAPHIC INFORMATION (VCGI) AND WERE NOT SURVEYED BY THIS OFFICE.

EXISTING TOPOGRAPHICAL FEATURES ARE APPROXIMATE ONLY AND WERE DRAWN FROM NNR AERIAL PHOTO.

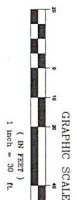
**ZONING TABLE**  
STOVE ZONING DISTRICT: RR3, LOT SIZE = 3 ACRES, MINIMUM  
SETBACKS ARE RR3 PER TABLE 6.2  
FRONT/YARD SETBACK: 70' - RR2  
SIDEYARD SETBACK: 60' - RR2  
REAR/YARD SETBACK: 60' - RR2  
MAX. HEIGHT: 28'





NOTES  
EXISTING LIDAR CONTOURS BASED ON INFORMATION  
TAKEN FROM THE VERMONT CENTER FOR GEOGRAPHIC  
INFORMATION (VCGI) AND WERE NOT SURVEYED BY THIS  
OFFICE.

**ZONING TABLE**  
STOVE ZONING DISTRICT: RR3, LOT SIZE = 3 ACRES, MINIMUM  
SETBACKS ARE RR3 PER TABLE 6.2  
FRONTYARD SETBACK: 70' - RR2  
SIDEYARD SETBACK: 60' - RR2  
REARYARD SETBACK: 60' - RR2  
MAX. HEIGHT: 28'



WALTER AND RENATE BOHLER REVOCABLE TRUST SUBDIVISION

617 COVERED BRIDGE RD



**GRENIER**  
ENGINEERING, PC  
155 DEMERITT PLACE #200  
ANN ARBOR MI 48106  
734/769-0000  
www.greniereng.com

<b>Date:</b>	5.20.24
<b>Scale:</b>	1" = 30'
<b>Designed:</b>	CW
<b>Drawn:</b>	
<b>Checked:</b>	

Date: 5.20.24  
Scale: 1"=30'  
Designed: CN  
Drawn:  
Checked: